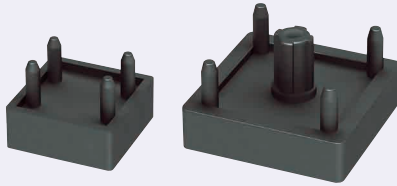


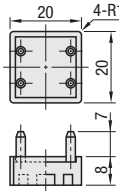
# Pads / Foot Bases for Aluminum Extrusions

## ■ Pads for Aluminum Extrusions

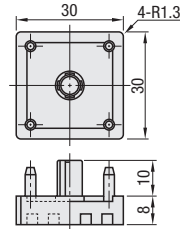


RoHS 10

### HFPD5-2020



### HFPD6-3030



Material: TPE (Thermoplastic Elastomer)

| Part Number |        | Applicable Extrusion | Mass (g) | Unit Price<br>1~9 pc(s). | Volume Discount Rate<br>10~50 |
|-------------|--------|----------------------|----------|--------------------------|-------------------------------|
| Type        | No.    |                      |          |                          |                               |
| HFPD        | 5-2020 | 5 Series 20mm Square | 4        |                          |                               |
|             | 6-3030 | 6 Series 30mm Square | 9        |                          |                               |

⚠ This can be used for Aluminum extrusion other than GFS Series.



Ordering Example  
Part Number  
Example HFPD6-3030

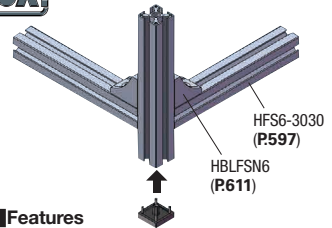
## ■ Characteristic Value

| Item  | Unit  | Value               |
|---|-------|---------------------|
| Hardness <sup>*1</sup>                                | Shore | D59                 |
| Tensile Strength <sup>*2</sup>                        | Mpa   | 19.9                |
| Plastic Deformation Rate by Compression <sup>*3</sup> | %     | 28                  |
| Specific Volume Resistivity                           | Ω·cm  | 6.5x10 <sup>9</sup> |

\*1. For comparison against the other materials for electrical conductivity based on JIS K 7215 Type D Durometer, refer to P516.

\*2. Based on JIS K 7113 ⚠ Above data are normal values, not standard values nor guaranteed values.

\*3. Based on JIS K 7113



## ■ Features

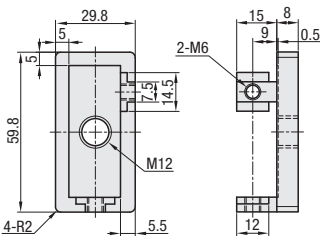
- This pad can be directly mounted to the end of Aluminum Extrusions.
- Tapping aluminum extrusion end faces not necessary.

## ■ Foot Base

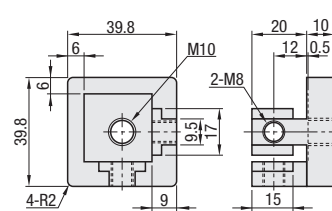


| Type | Component | Material |
|------|-----------|----------|
| HLFC | Caster    | SCS13    |
|      | Set Screw | SUS304   |

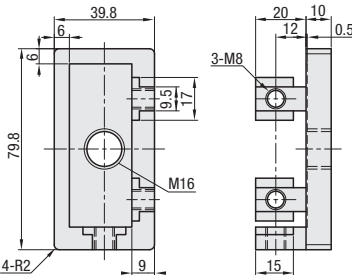
### HLFC6-3060



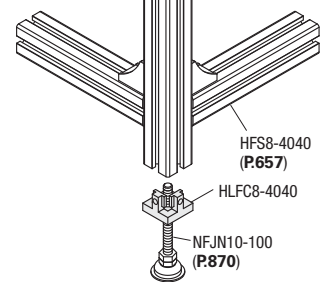
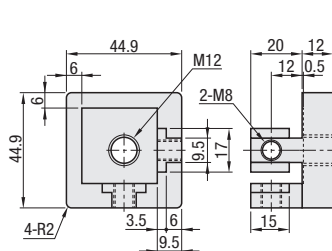
### HLFC8-4040



### HLFC8-4080



### HLFC8-4545



- ⚠ Attach leveling mounts and foot bases first, then mount to aluminum extrusions.
- ⚠ Tapping aluminum extrusion end faces not necessary.

## ■ Features

- Can be installed easily by using the included set screws only.
- Tapping aluminum extrusion end faces not necessary.

| Part Number |               | Accessory        | Mass (g) | Unit Price<br>1~9 pc(s). | Volume Discount Rate<br>10~50 |
|-------------|---------------|------------------|----------|--------------------------|-------------------------------|
| Type        | Extrusion No. |                  |          |                          |                               |
| HLFC        | 6-3060        | M6 Set Screw x 2 | 140      |                          |                               |
|             | 8-4040        |                  | 150      |                          |                               |
|             | 8-4080        | M8 Set Screw x 2 | 300      |                          |                               |
|             | 8-4545        |                  | 210      |                          |                               |



Ordering Example  
Part Number  
Example HLFC8-4040