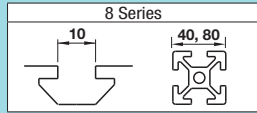
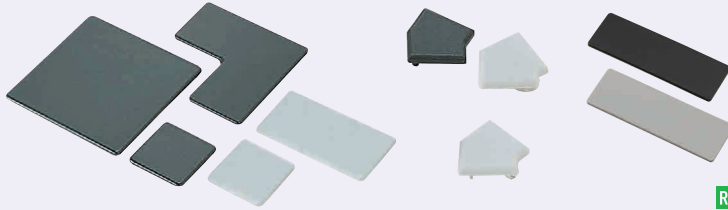


# Extrusion End Caps

## For 8 Series (Slot Width 10mm) Aluminum Extrusions



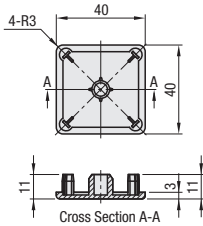
**Features:** Standard caps for protecting extrusion end faces. Alterations for Aluminum Extrusions are not necessary.



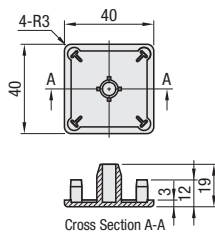
Type	Material
HFC GFC	Polyamide
HFCL	Low Density Polyethylene

- Some products are not required to specify colors. In that case, color is black.
- The pin's shape and numbers of extrusion end caps may be changed to prevent caps from easily falling off.
- HFCL is not applicable to extrusions with Wrench Hole in Fixed Position (P785), D Type Hole (P790), or L Hole (P793).
- Due to the properties of its material, when HFCL is mounted onto the mating Aluminum extrusion, some dim. variation may be generated.

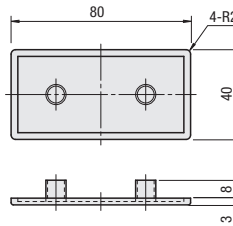
**HFC8-4040**



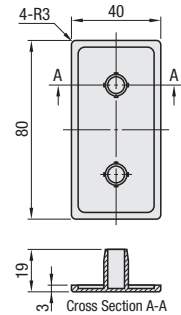
**HFCL8-4040**



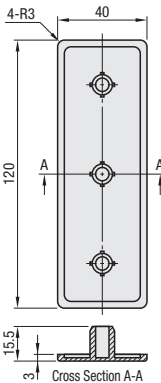
**HFC8-4080**



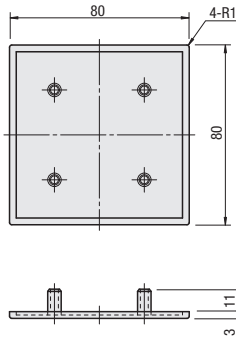
**HFCL8-4080**



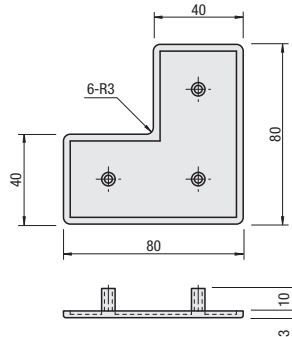
**HFC8-40120**



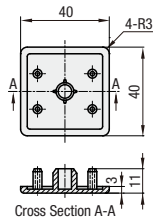
**HFC8-8080**



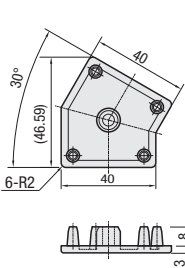
**HFC8-808040**



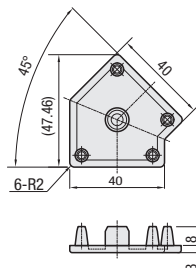
**GFC8-4040**



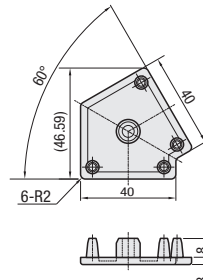
**HFC30A8**



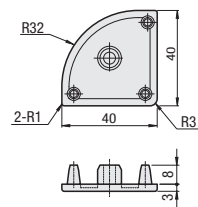
**HFC45A8**



**HFC60A8**



**HFCR8-4040**



- HFC and HFCL can be used for each Aluminum Extrusion other than GFS/GNFS Series. For GFS Series Aluminum Extrusions, select GFC or HFCD (P704).
- Only for GFC, 4 tabs are fitted into the mating extrusion slot upon assembly.

Part Number Type	No.	Color	Unit Price			Applicable Extrusion
			1 - 14 pc(s).	15 - 19	20 - 200	
HFC8	4040	B (Black)				8-4040(1)
	4080					8-4080
	40120					8-40120
	8080					8-8080
	808040					8-808040
HFCL8	4040	S (Light Gray)				8-4040
	4080					8-4080
HFC30A8						30A8-40
HFC45A8						45A8-40
HFC60A8						60A8-40
HFCR8-4040						8-4040
GFC8	4040	B				GFS8-4040(2)



When using Aluminum Extrusion HFS8-80160, please use 2 pieces of HFC8-8080.

