

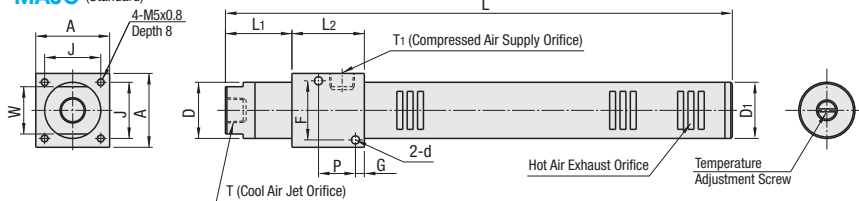
Jet Air Coolers

Standard, Compact Low Temperature, Adjusting Hose

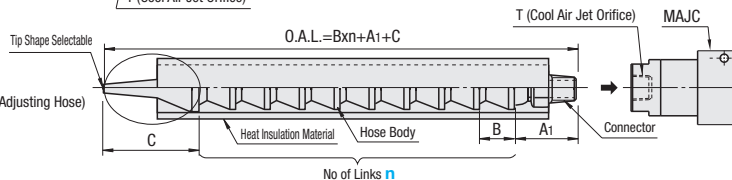
Instruction manual is available online:
<http://fa.misumi.jp/ht/>



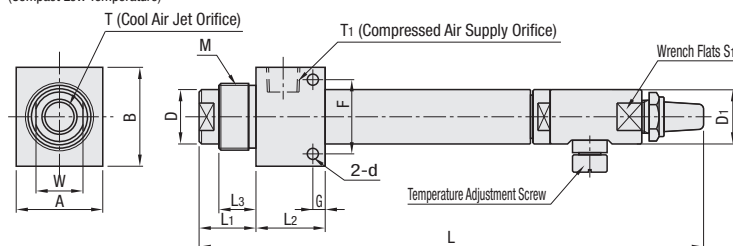
MAJC (Standard)



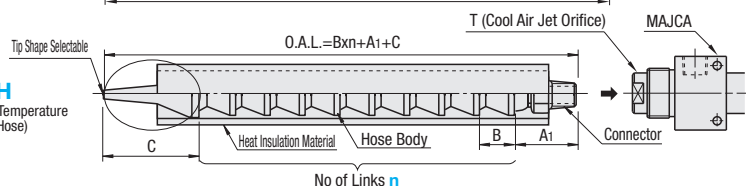
MAJCH (Standard with Adjusting Hose)



MAJCA (Compact Low Temperature)



MAJCAH (Compact Low Temperature with Adjusting Hose)

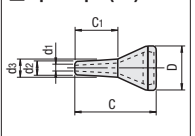


Heat Resistance Temperature
 Adjusting Hose : -20 ~ 80°C
 Heat Insulation Material : -50 ~ 120°C

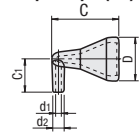
Material
 Heater : MAJC-A6063
 MAJCA-A6061
 Jet Orifice : Polyacetal (White)
 Hose Body : Polyacetal (Blue)
 Connector, Tip Nozzle : Polyacetal (Orange)
 Heat Insulation Material : EPDM Synthetic Rubber

RoHS 10

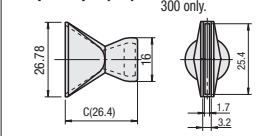
Tip Shape (A3)



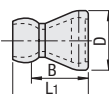
Tip Shape (B3)



Tip Shape (D1) (D-shape is for No.150, 300 only)



Hose Body (1 Link)



Hose Body and Connector Size

No.	D	A1	B	L1
150, 300	16	23	14.5	20.7
450, 600	24.5	28	17.0	30.0

Tip Shape Diameters

No.	A3						B3					
	C	C1	D	d1	d2	d3	C	C1	D	d1	d2	
150, 300	35	25.5	16	6.3	9.6	11.0	26.3	12	16	6.3	9.0	
450, 600	37.5	24.5	24.5	12.5	17.0	19.0	39.0	19.5	24.5	12.4	15.4	

Part Number Type	No.	L	D1	L1	D	W	T Rc(PT)	L2	F	P	G	T1 Rc(PT)	d	A	B	M	L3	S1	Operating Pressure (MPa)	Pressure Resistance (MPa)	Weight (kg)	Unit Price	
(Standard) MAJC	150	228	25	26	22	19	1/8	31	26	12	5	1/8	4.5	35	-	-	25	-	-	0.2~0.5	1.0	0.25	
	300	315	30	31	28	24	1/4	38	33	18	5	1/4	5.5	40	-	-	30	-	-				
	600	343	38	45	38	32	3/8	49	40	25	6	3/8	5.5	50	-	-	38	-	-				
(Compact Low Temperature) MAJCA	150	198	20	21	20	17	1/8	24	24	-	5	1/8	4.5	30	35	M24x1.5	-	13	18	0.3~0.7	1.0	0.2	
	300	204	22	23	22	19	1/4	28	30	-	5	1/4	4.5	35	40	M27x1.5	-	15	19				
	600	272	32	27	30	26	3/8	37	36	-	7	3/8	6.6	40	50	M33x1.5	-	15	27				

Part Number Type	No.	Link Number n Configurable	Tip Shape Selectable	Hose Body				Jet Cooler Unit Price	Connector Unit Price	Link Unit Price	Tip Shape Unit Price		
				Hose I.D.	D	B	L1				A3	B3	D1
(Standard with Adjusting Hose) MAJCH	150	0~30	A3, B3, D1	1/4 inch	16	14.5	20.7						
	300			1/2 inch	24.5	17.0	30.0						
	600												
(Compact Low Temperature with Adjusting Hose) MAJCAH	150	0~30	A3, B3, D1	1/4 inch	16	14.5	20.7						
	300												
	600												

Ordering Example: Part Number - Number of Links - Tip Shape
 MAJC150 - 10 - D1
 MAJCH300 - 10 - D1