

# Links

## Standard Type

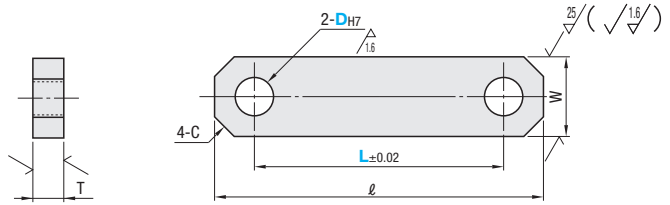
■ **Features:** Two-Hole Type Standard specifications - Selectable and Configurable are available.

L Selectable	D2 Configurable	W Configurable	Type R	Material	Surface Treatment
LNSB	LNDB	LNFB	LNFRB	S45CEquivalent	Black Oxide
-	LNDM	LNFM	LNFRM		Electroless Nickel Plating
LNSS	LNDS	LNFS	LNFRS	SUS304	-

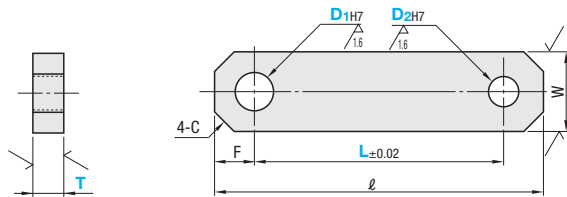
\* SS400 for T=2.



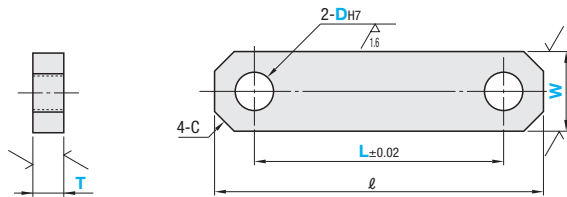
• L Selectable



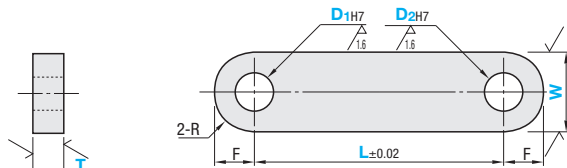
• D2 Configurable



• W Configurable



• Type R



• T Dimension Tolerance

T	2	3~16	19~22
	±0.15	0	0
		-0.3	-0.33

### ■ L Selectable

Part Number Type	DH7	L Selection						W	T	ℓ	C	Unit Price	
		25	30	40	50	75	100					LNSB	LNSS
LNSB LNSS	5	25	30	40	50			13	5	L+13	3		
	6	25	30	35	40	45	50					75	
	8	25	30	35	40	45	50	75					
	10	30	30	40	50	75		16		L+16			
	12				50	75		19	9	L+19	5		

### ■ D2 Configurable

Part Number Type	D1H7	D2H7 1mm Increment	L 1mm Increment	T Selection				W	ℓ	F	C		
				2	3	6	9						
LNDB LNDM LNDS	2	2~20  D1≥D2	5~75	2	3			8	L+8	4	2		
	3		5~150	5	6								
	4		6~150	5	6	9							
	5		7~150	5	6	9		13	L+10	5	3		
	6		8~150	5	6	9							
	8		10~150	5	6	9							
	10		12~200	5	6	9		16	L+12	6	5		
	12		14~200	5	6	9	12						
	13		15~200	5	6	9	12						
	14		16~200	5	6	9	12	19	L+16	8	8		
	15		18~200	5	6	9	12						
	16		20~200	5	6	9	12					16	
	18		22~200			9	12	16		25	L+20	10	5
	20		25~300			9	12	16	19				
	25		30~300			9	12	16	19				
								32	L+24	12	8		
								38	L+28	14	8		
								50	L+30	15			
									L+36	18			

Ⓢ When D2H7=2, T≤9