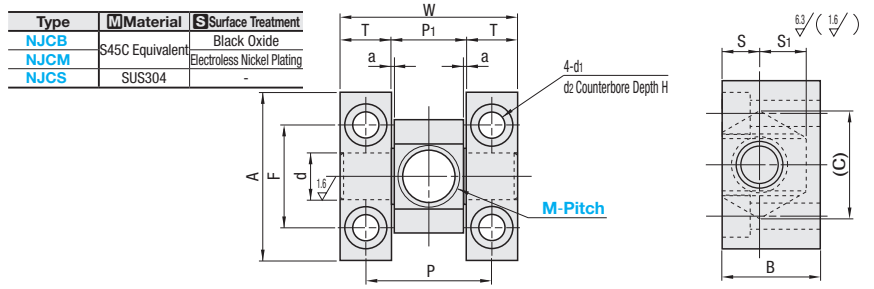


Knuckle Joints

Extra Short / Tool-Less

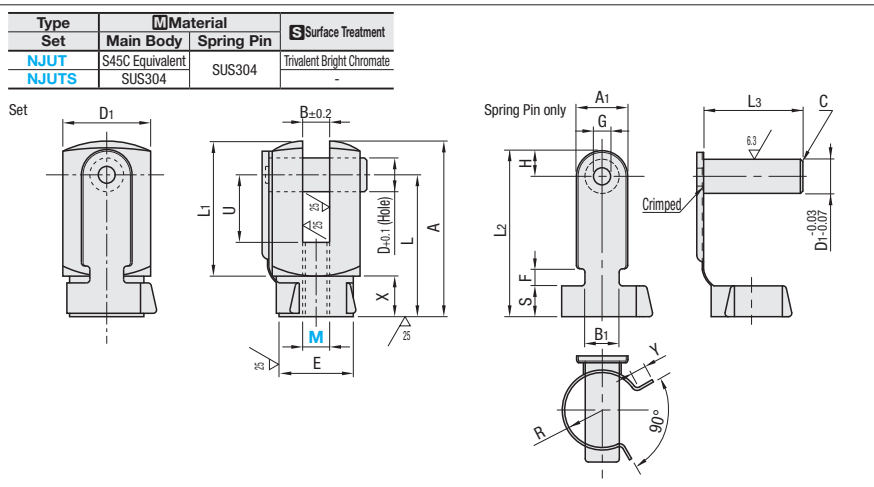
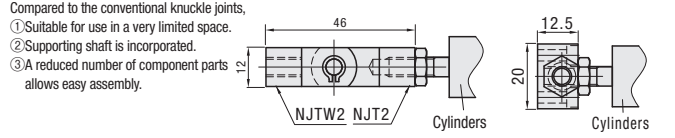
■ **Features:** Extra Short Type that can be used in a limited space is available.



Part Number Type	M-Pitch	A	B	d	F	W	P	T	P1	a	S	S1	(C)	d1	d2	H	Mass (g)	Unit Price		
																		NJCB	NJCM	NJCS
NJCB NJCM NJCS	3-0.5	18	10.5	5	11	19	13.5	5.5	8	0.3	4	5	11.6	2.8	4.5	3	21			
	4-0.7	19	11.5		12	20.5	15		9.5			5.5	12.7				26			
	5-0.8	20	12.5	6	13	27	20	7	13		6	13.9	36							
	6-1.0	24		17	8	16	34	26	8		18	7	8.5	19.6	82					
	8-1.0	30	20.5	10	20	38	29	9	20		8	10.5	24.3	139						
	10-1.25	36	25	12	24	44	34	10	24		10	12.5	28.9	230						
	12-1.25	42	28.5	14	28	52	40	12	28		11	14.5	33.5	365						
	14-1.5	48	33	16	32	60	46	14	32		13	16	37	542						
	16-1.5	54	36	18	36	68	52	16	36		14	18	41.6	764						

Ordering Example
Part Number
NJCS10-1.25
NJCB18-1.5

■ **Features:** Compared to the conventional knuckle joints, ① Suitable for use in a very limited space. ② Supporting shaft is incorporated. ③ A reduced number of component parts allows easy assembly.



Part Number Type	M	MxPitch	D±0.1	B±0.2	U	A	L	L1	D1	E	X	Unit Price Set	
												NJUT	NJUTS
Set NJUT NJUTS	4	M4x0.7	4.2	4.3	6	21	16	13	11	8.5	8		
	5	M5x0.8	6.8	5.3	12	31	24	22	16	12.5	9		
	6	M6x1.0	10.5	6.8	20	52	42	38	26	21	14		
	8	M8x1.25		8.3									
10	M10x1.25	10.3											

M Applicable to Set	D1 -0.03 / +0.07	A1	B1	Y	L2	L3	H	F	G	S	R	C
4	4	9.5	5	3	18	13	4	3	3	6	4.5	1
5, 6	6.5	14	7	4	28	18	6	5	5	6	6.5	1.5
8, 10	10	20	10	6	48	28	8	4	6	10	11	2

Ordering Example
Part Number
NJUT6

■ **Features:** Quick assembly (removal) is possible.

