

# Hinge Bases

## Side Mounting U-Shaped

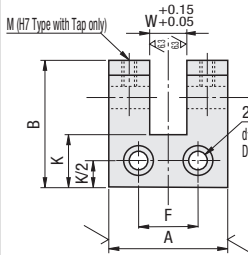
■ **Features:** U-Shaped and side mounting can reduce the height.



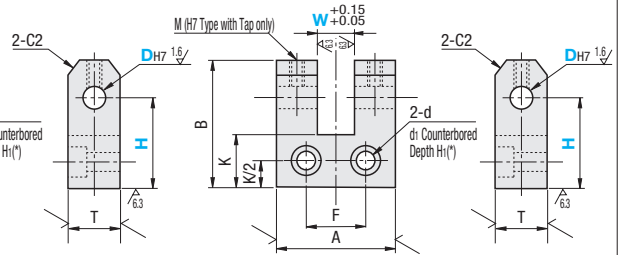
H Configurable		W and H Configurable		M	S	A
H7 Type	H7 Type with Tap	H7 Type	H7 Type with Tap	Material	Surface Treatment	Accessory
HKSUB	HKSUBT	HGSUB	HGSUBT	S45C	Black Oxide	Set Screws 2 pcs. (SUS304)
HKSUM	-	-	HGSUMT	Equivalent	Electroless Nickel Plating	
HKSUS	-	HGSUS	-	SUS304	-	

25 / (√ 6.3 / 1.6)

H Configurable



W and H Configurable



RoHS10

Ⓜ For H7 Type, M part doesn't have tap and set screw. Ⓜ Holes for D=2 are through holes, not counterbored.

### ■ H Configurable

Part Number	Type	DH7	H 1mm Increment	W	A	F	B	K	T	d	d1	H1	M	Unit Price				
														HKSUB	HKSUM	HKSUS	HKSUBT	
(H7) HKSUB HKSUM HKSUS	2	3	15~20	4	13	7	H+3	10	6	3.5	6.5	3.5	M3					
	3	4	20~25	6	16	8	H+5		9									
	4	5	25~30	8	19	11	H+6		12									
	(H7 Type with Tap) HKSUBT	6	6	30~40	10	32	20	H+8	14	16	5.5	9.5	5.5	M4				
		8	8	35~45											16	19		
		10	12	40~50											20	22		
		12	13	50											25	25		
		13	14	35~45	16	36	H+12	15	22	6.5	11	6.5	M5					
		14	15	40~50										18	25			
		15	16	20~30										20	30			
		16	20	25~35										25	30			

Ⓜ For detailed dimensions of Hinge Pin, see P. 908.

### ■ W and H Configurable

Part Number	Type	DH7	W 1mm Increment	H 5mm Increment	A	F	B	K	T	d	d1	H1	M	Unit Price				
														HGSUB	HGSUS	HGSUBT	HGSUMT	
(H7) HGSUB HGSUS	2	3	3~5	15~20	13	7	H+3	10	6	3.5	6.5	3.5	M3					
	3	4	20~25	16	8	H+5	9											
	4	5	25~30	19	11	H+6	12											
	(H7 Type with Tap) HGSUBT HGSUMT	6	6	30~40	50	32	20	H+8	14	16	5.5	9.5	5.5	M4				
		8	8	35~45											19			
		10	12	40~50											22	25		
		12	13	20~30											25	30		
		13	14	20~30	65	47	H+14	18	25	9	14	9	M6					
		14	15	25~35										30				
		15	16	20~30										30				
		16	20	25~35										30				

Ⓜ For detailed dimensions of Hinge Pin, see P. 908. Ⓜ For H7 type with tap, (A-W)/2 ≥ M+2 is required.



Ordering Example

Part Number - H  
HKSUB10 - H33

Part Number - W - H  
HGSUB10 - W16 - H35



Example

■ **Features:** Side mounting allows to reduce height.

