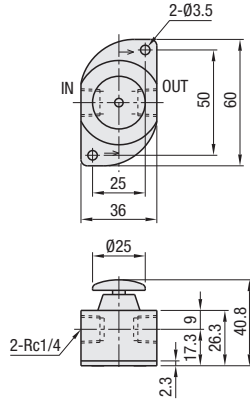


Step Switching Valves

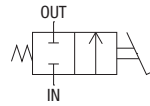
2-Port / 3-Port / 4-Port



MSFF (No Lock Mechanism)

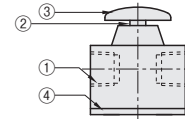


JIS Symbol



Features

- Switching valve to switch a flow of compressed air on and off. Air starts flowing by pressing the pedal, and the flow stops by releasing the pedal.
- Mountable either vertically or horizontally. Manual operation is also possible.



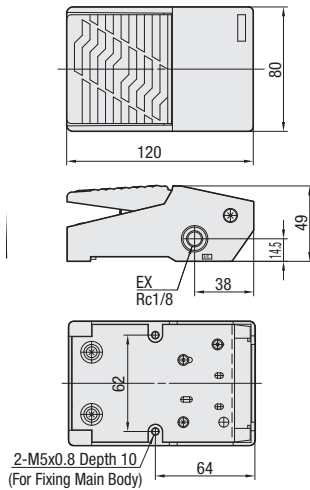
Component List

Part Number	Name	Material	Surface Treatment
①	Main Body	A2017B	Clear Anodize
②	Rod	C3604B	
③	Pedal	A5052B	Clear Anodize
④	Plate	SPC	Chrome Plating

Part Number Type	Direction No.	Number of Ports	Pipe Connection Bore Dia.		Number of Positions	Effective Sectional Area (mm ²)	Operating Pressure (MPa)	Max. Actuating Force (N)	Operating Temp. Range (°C)	Applicable Fluid	Mass (g)	Unit Price	
			IN, OUT	EX								MSFB	MSFBR
MSFF	2	2	2	Rc1/4	2	6	0~0.7	40	5~60	Air	130		



MSFB (No Lock Mechanism)
MSFBR (with Lock Mechanism)

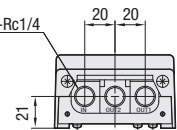
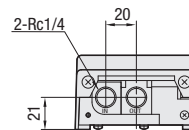


[Features]

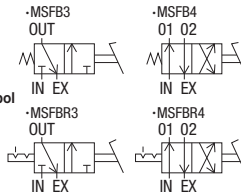
- For the Lock Mechanism Type, the pedal is locked when stamped.
- The lock is released when the locked pedal is stamped again.

(No.3)

(No.4)



JIS Symbol



Material: ADC12 (Silver Paint)

Part Number Type	Direction No.	Number of Ports	Pipe Connection Bore Dia.			Number of Positions	Effective Sectional Area (mm ²)	Operating Pressure (MPa)	Max. Actuating Force (N)	Operating Temp. Range (°C)	Applicable Fluid	Mass (g)	Unit Price	
			IN, OUT	EX									MSFB	MSFBR
MSFB	3	3	3	Rc1/4	Rc1/8	2	8	0~0.7	29	5~60	Air	560		
MSFBR	4	4	4	Rc1/4	Rc1/8	2	8	0~0.7	29	5~60	Air	680		

Ordering Example

Part Number
MSFF2
MSFBR4

Example

