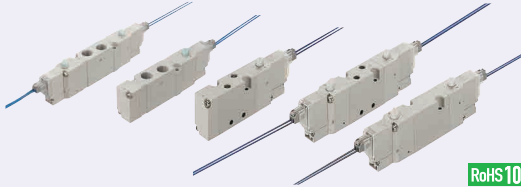


# Solenoid Valves

## 5-Port

### 5-Port Direct Connection / Base Plumbing Solenoid Valves

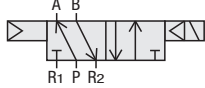


RoHS10

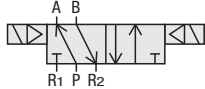
### JIS Symbol

#### M5 Type

##### Single Solenoid

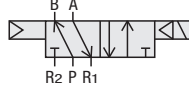


##### Double Solenoid

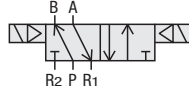


#### Rc1/8 Type

##### Single Solenoid



##### Double Solenoid

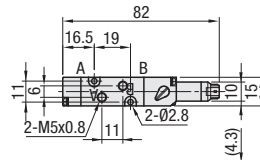


### Features

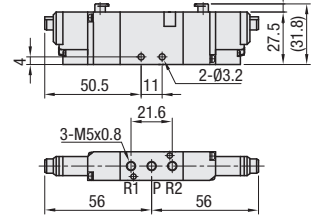
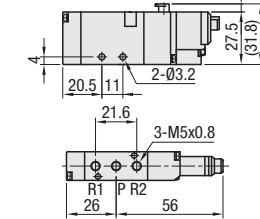
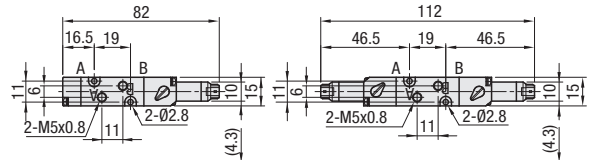
- Direct Connection Type can be directly connected to the pipes.
- Base Plumbing Type must be attached on the base unit (P1504) for connection. Can not be directly connected to the solenoid valve. For using this type, please purchase base unit separately.
- External dimensions of this type are the same as those of Direct Connection Type.
- **Direct Connection Type**
- **Base Plumbing Type**
- **Operating Environment**
- Use the solenoid valves at temperatures between 5 and 50 °C. Avoid any use and storage in a corrosive atmosphere.
- Do not use the solenoid valves in such locations as where water or oil splash and dusty area.
- **Fluid Quality**
- When compressed air is used as a fluid, remove drainage and dust through an air filter.
- Can be used without lubrication maintenance. Use turbine oil "ISO VG32" if any lubricant is to be added.
- **Continuous Current**
- If a valve is continuously energized for long periods, heat generation of the coil may result in reduced performance and shorter service life. Please set the valve to make the nonenergized period longer.
- **Installation**
- The valve must be installed by mounting the body and must not be supported by the plumbing.
- **Maintenance**
- Before the maintenance, be sure that you have turned off the power, stopped the compressed air supply, and no residual pressure left.
- Do not disassemble the solenoid valves.

### M5 Type

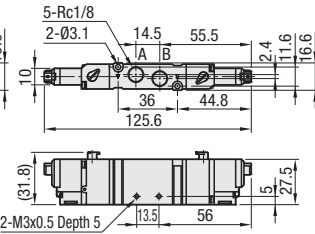
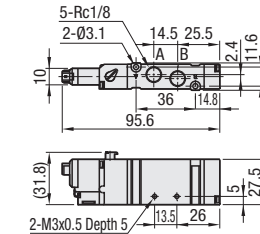
#### Direct Connection / Single Solenoid



#### Direct Connection / Double Solenoid



### Rc1/8 Type



A Accessory: Base Plumbing Type only; Gaskets (NBR) / Mounting Screws (SS400 Nickel Plating) Lead Wire: 500mm

Type	Connection Dia.	Part Number		Valve Voltage (V)	Unit Price	
		Solenoid	Plumbing Method		M5 Type	Rc1/8 Type
MD	SY (M5)	S (Single Solenoid)	No Symbol (Direct Connection Type)	A (24VDC) B (100VAC) C (200VAC)		
	MY (Rc1/8)	D (Double Solenoid)	M (Base Plumbing Type)			



Ordering Example

Type	Connection Dia.	Solenoid	Plumbing Method	Valve Voltage (V)
MD	SY	S	M	A
MD	MY	D	M	C

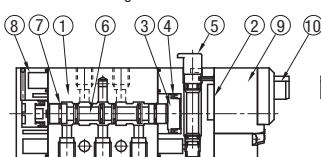
### Basic Specifications of Solenoid Valves

Connection Dia.	M5	Rc1/8
Effective Sectional Area	3.8mm <sup>2</sup>	13mm <sup>2</sup>
Valve Type	Pilot-Operated, 5-Port	
Number of Ports	5	
Number of Positions	2	
Applicable Fluid	Air	
Operating Pressure	0.15~0.7MPa	
Pressure Resistance	1.0MPa	
Response Time	30ms	19ms
Operating Temp. Range	5 ~ 50°C	
Rated Voltage	24VDC, 100VAC, 200VAC	
Power Consumption	2.1/1.8VA(50/60Hz AC), 1.6W(DC)   1.6/2.5VA(50/60Hz AC), 1.2W(DC)	
Allowable Voltage Range	±10%	
Insulation Class	B Type	F Type

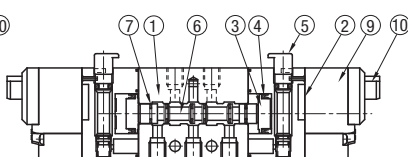
### Cross Section Structure Diagram

\* The figures below are for Direct Connection Type, but the components are in common with the Base Plumbing Type.

#### Single Solenoid



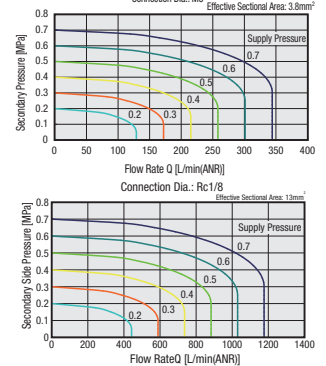
#### Double Solenoid



### Component List

Part Number	Name	Material	Part Number	Name	Material
①	Main Body	A6061	⑥	Spool Valve	A6061
②	Pilot Body	PBT	⑦	Spool Valve Gasket	NBR
③	Piston	POM	⑧	End Cover	PBT
④	Piston Gasket	NBR	⑨	Coil	
⑤	Push Button	POM	⑩	Connector Cord	

### Flow Rate Characteristics



Check for the following when operating condition is poor.

- Whether the operating pressure is 0.15 ~ 0.7MPa. (Not operational at less than 0.15MPa.)
- If operated within the range of rated voltage.