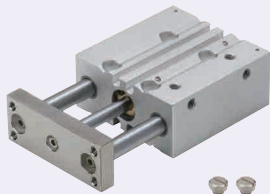


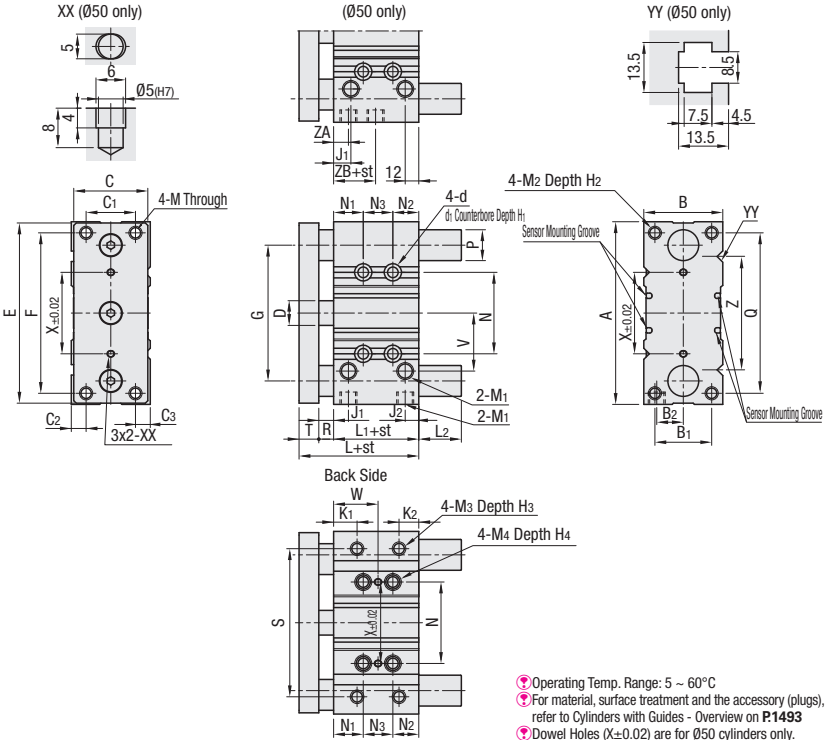
Cylinders with Guides

Cylinders with Guides



Type	Type		Features
	Plain Bushing	Linear Bushing	
Standard Stroke	MGCLF	MGCLB	Standard Stroke Type is available.
Spacer Installed Type	MGCLFN	MGCLBN	Intermediate strokes can be selected in 1mm increments. (Spacer Fitted)

⚠ No sensor for cylinder is included in any of these types P1496.



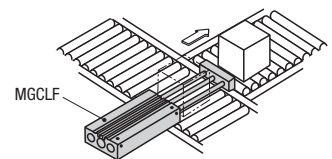
Tube I.D. (mm)	A	B	B ₁	B ₂	C	C ₁	C ₂	C ₃	d	d ₁	D	E	F	G	H ₁	H ₂	H ₃	H ₄	J ₁	J ₂	K ₁	K ₂	L	L ₁
12	58	26	18	8.5	22	14	6	6	4.3	8	6	56	48	41.5	4.5	9	7	10	11	15	12	12	39	29
16	64	30	22	10	25	16	7	7	4.3	8	8	62	52	46	4.5	11	7	10	11	17	11	13	43	31
20	85	36	26	11.5	30	18	8	10	5.2	9.5	10	72	60	55	5.5	13	7	12	12	23	11	14	47	35
25	96	42	32	13.5	38	26	8	8	5.2	9.5	12	86	70	65	5.5	15	9	12	11	23.5	12	13.5	47.5	35.5
32	116	51	38	16	48	30	11	10	6.8	11	16	112	96	80	6.5	18	11	16	11.5	25	12	16.5	47.5	33.5
50	148	64	46	21.5	60	40	12	12	8.6	14	20	146	130	110	9	22	-	20	14	11	-	-	72	44

Tube I.D. (mm)	M	M ₁	M ₂	M ₃	M ₄	N	N ₁	N ₂	N ₃	P		Q	R	S	T	V	W	
										Plain Bushing	Linear Bushing							
12	M4x0.7	M5x0.8	M4x0.7	M4x0.7	M5x0.8	23	5	20	4+St	8	6	40	2	50	8	19.5	-	
16	M5x0.8	M5x0.8	M5x0.8	M5x0.8	M5x0.8	24	5	22	4+St	10	8	42	2	54	10	23	-	
20	M5x0.8	Rc1/8	M5x0.8	M5x0.8	M6x1.0	28	19	16	St	12	10	52	2	64	10	24.5	-	
25	M6x1.0	Rc1/8	M6x1.0	M6x1.0	M6x1.0	34	22	12.5	1+St	16	13	62	2	76	10	24	-	
32	M8x1.25	Rc1/8	M8x1.25	M8x1.25	M8x1.25	42	22	14.5	St-3	20	16	80	2	100	12	31	-	
50	St=25	M10x1.5	Rc1/4	M10x1.5	-	M10x1.5	66	24	21	24	25	-	130	12	-	16	47	36
	22								48	48								
	72								48	48								

Tube I.D. (mm)	X	Z	ZA	ZB	L ₂ Dimensions															
					St Stroke (mm)															
					Plain Bushing								Linear Bushing Type							
10	20	25	30	40	50	75	100	10	20	25	30	40	50	75	100					
12	-	-	-	-	0	0	0	0	0	18	18	0	0	0	14	14	14	14		
16	-	-	-	-	0	0	0	0	21	21	0	0	0	21	21	21	21			
20	-	-	-	-	0	0	0	0	14	14	0	0	0	27	27	27	27			
25	-	-	-	-	0	0	0	0	14	14	-	2	2	35	35	35	35			
32	-	-	-	-	-	20	-	-	20	20	-	-	8	-	8	42	42			
50	66	92	12	9	-	-	34.5	-	-	34.5	-	46	-	-	-	-	-			



Example



<Intermediate Stroke Work for Type with Spacer Installed>

Ex.) For MGCLFN12-70,

A 5mm spacer is mounted into a Sliding Bearing Standard Stroke Type cylinder with a 12mm I.D. and a 75mm stroke.

* L₂=18mm.

* L₁ + St will be 29 + 75 = 104 mm.

* All other external dimensions are the same as for MGCLF12-75.