

# Air Couplers - Plugs / Sockets

## Branch Type

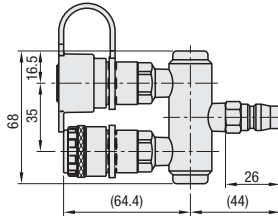
For combination of plugs and sockets, refer to P.1414.

### Branch Type - 2 Positions Fixed



RoHS10

#### MCRN



Material: Body: Aluminum Coupler: Steel (Nickel Plating)

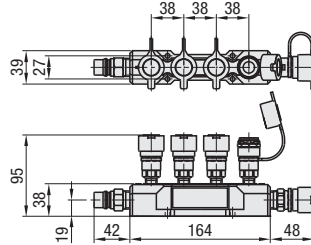
Part Number	Unit Price	Volume Discount Rate
Type	No.	1 ~ 4 pc(s)
MCRN	4	5~20

### Branch Type - 4 Positions Fixed



RoHS10

#### MCRT



Material: Body: Aluminum Coupler: Steel (Nickel Plating)

Part Number	Unit Price	Volume Discount Rate
Type	No.	1 ~ 4 pc(s)
MCRT	4	5~20

#### Specifications

Seal Material	Nitrile Rubber (NBR)
Operating Temperature Range	-20 ~ 60°C
Applicable Fluid	Air
Max. Operating Pressure MPa (kgf/cm <sup>2</sup> )	1.5 (15)
Pressure Resistance MPa (kgf/cm <sup>2</sup> )	2.0 (20)

#### Features

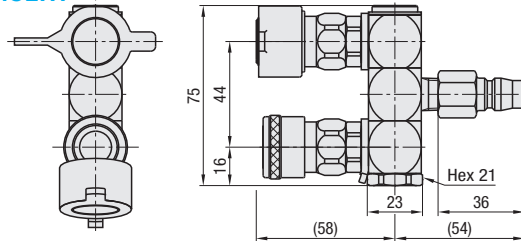
Allows branching from one pipe into multiple pipes.

### Branch Type (Swivel) - 2 Positions Swivel



RoHS10

#### MCLTR



Material: Body: Brass (Chrome Plating) Coupler: Steel (Nickel Plating)

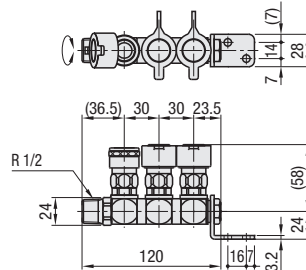
Part Number	Unit Price	Volume Discount Rate
Type	No.	1 ~ 4 pc(s)
MCLTR	2	5~20

### Branch Type (Swivel) - 3 Positions Swivel



RoHS10

#### MCRE



Material: Body: Brass (Chrome Plating) Coupler: Steel (Nickel Plating)

Part Number	Unit Price	Volume Discount Rate
Type	No.	1 ~ 4 pc(s)
MCRE	3	5~20

#### Specifications

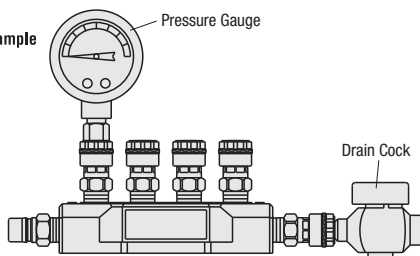
Seal Material	Nitrile Rubber (NBR)
Operating Temperature Range	-20 ~ 60°C
Applicable Fluid	Air
Max. Operating Pressure MPa (kgf/cm <sup>2</sup> )	1.5 (15)
Pressure Resistance MPa (kgf/cm <sup>2</sup> )	2.0 (20)

#### Features

Allows branching from one pipe into multiple pipes.  
• 360° turn port.



Example



Ordering Example

Part Number

MCRN4  
MCLTR2