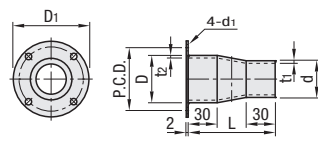


### Reducers



Type			Material	Surface Treatment
For Duct Hoses	For Aluminum Duct Hoses			
Flanged	No Flange	Flanged	SS400 SUS304	Baked Acrylic Paint -
HORM	HOARM	HOARFM		
HORS	HOAR	HOAFR		



RoHS10

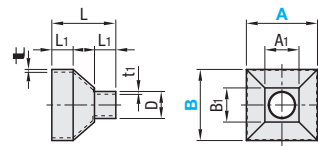
Part Number	Type	Nominal Dia.	Hose Nominal Dia.	d	D	L	D1	P.C.D.	d1	t1	t2	Unit Price	
												HORM	HORS
For Duct Hoses (Flanged) <b>HORM</b> <b>HORS</b>	38	50	38	50.8	90	79	65	6.6	1.2	1.5			
	50	75	50.8	76.3	90	111	94	9	1.5	2			
	65	100	63.5	76.3	100	136	119	9	2	2			
	75	100	76.3	101.6	100	136	119	9	2	2			
	125	150	127	152.4	100	188	170	9	2	2			

Part Number	Type	Nominal Dia.	Hose Nominal Dia.	d	D	L	D1	P.C.D.	d1	t1	t2	Unit Price			
												HOARM	HOAR	HOARFM	HOAFR
For Aluminum Duct Hoses (No Flange) <b>HOARM</b> <b>HOAR</b>  (Flanged) <b>HOARFM</b> <b>HOAFR</b>	38	50	38	49	90	79	65	6.6	1.2	1.5					
	50	75	49	75	90	111	94	9	1.5	2					
	65	100	63.5	75	100	136	119	9	2	2					
	75	100	75	98	100	136	119	9	2	2					
	100	113	98	112	100	152	134	9	2	2					
	113	125	112	124	100	168	148	9	2	2					
125	150	124	149	100	193	173	9	2	2						

### Food Covers



Type	Material
For Duct Hoses <b>HOSYS</b>	SUS304



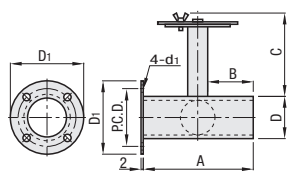
RoHS10

Part Number	Type	Nominal Dia.	A	B	D	A1	B1	t	t1	L	L1	Unit Price
For Duct Hoses <b>HOSYS</b>	38	50	100	100	38	50	48	1.2	1.2	90	30	
	50	75	100	100	50.8	61	61	1.5	1.5	120	40	
	65	150	150	200	63.5	74	74	1.5	2.0	150	40	
	75	200	200	200	76.3	86	86	2.0	2.0	150	40	
	100	200	200	300	101.6	112	112	2.0	2.0	150	40	

### Dampers



Type			Material	Surface Treatment
For Aluminum Duct Hoses	No Flange	Flanged		
	Flanged	Double Flanged	SS400 SUS304	Baked Acrylic Paint -
HOANM	HOANPM	HOANPFM		
HOAN	HOANP	HOANFP		



RoHS10

Part Number	Type	Nominal Dia.	D	A	B	C	D1	P.C.D.	d1	Unit Price					
For Aluminum Duct Hoses (No Flange) <b>HOANM</b> <b>HOAN</b> (Flanged) <b>HOANPM</b> <b>HOANP</b> (Double Flanged) <b>HOANPFM</b> <b>HOANFP</b>	38	38	38	99	41	75	66	52	6.6						
	50	48.5	99	41	75	91.5	77.5	66	65	9.0					
	65	63.5	119	51	75	111	94	66	94	9.0					
100	98	150	66	75	136	119	66	119	9.0						
125	124	150	66	75	168	148	66	148	9.0						
150	149	150	66	75	193	173	66	173	9.0						

Ordering Example Part Number **HORM50-65**

Specifications  
Operating Temperature Range: 0 ~ 160°C