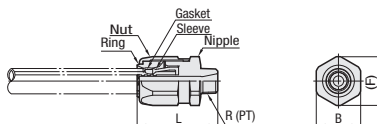


# Plastic Hose Mounting Connectors / Arm Locking Couplers



Type	Material							Applicable Hose
	Nipples	Inner	Rubber Caps	Washer	Swaging Sleeve Nut	Rubber Gasket	Sleeve, Ring	
TCSM	SCS13	-	-	-	SCS13	NBR	POM	HOTR□, HOTRS□, HOTSG□, HOTG□



Part Number	Type	No.	L	Hex/Octagon Socket B	V	(F)	G	R (PT)	Applicable Hose	Unit Price	Volume Discount Rate
										1 ~ 4 pc(s).	5 ~ 10 pcs.
<b>TCSM</b> (Stainless Steel)		9	54.5	30	7	33	-	3/8	HOTR□ HOTRS□ HOTSG□ HOTG□		
		12	59	32	10	35.5		1/2			
		15	60	36	12	40		1/2			
		19	64	41	16.5	45		3/4			
		25	70	50	22	54		1			

⚠ Operating Pressure is the same as for Applicable Hoses.

⚠ For orders larger than indicated quantity, please check with WOS.

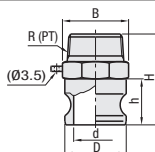
## Arm Locking Couplers

### Male Threaded Adapters



RoHS 10

Type	Material
SNAMA	SCS14A



Part Number	Type	No.	R (PT)	D	d	H	h	B	Unit Price	Volume Discount Rate
									1 ~ 19 pc(s).	20 ~ 30 pcs.
<b>SNAMA</b>		15A	1/2	32	20	58	26	33		
		20A	3/4	32	20	58	26	33		
		25A	1	37	24	70	32	41		
		40A	1 1/2	53	36	79	40	57		
		50A	2	63	46	87	47	68		

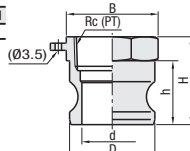
⚠ For orders larger than indicated quantity, please check with WOS.

### Female Threaded Adapters



RoHS 10

Type	Material
SNAF A	SCS14A



Part Number	Type	No.	Rc (PT)	D	d	H	h	B	Unit Price	Volume Discount Rate
									1 ~ 19 pc(s).	20 ~ 30 pcs.
<b>SNAF A</b>		15A	1/2	32	20	39	26	33		
		20A	3/4	32	20	39	26	33		
		25A	1	37	24	49	34	41		
		40A	1 1/2	53	36	55	40	57		
		50A	2	63	46	63	47	69		

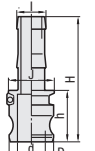
⚠ For orders larger than indicated quantity, please check with WOS.

### Hose Mounting Adapters



RoHS 10

Type	Material
SNAH A	SCS14A



Part Number	Type	No.	D	d	H	h	I	J	Unit Price	Volume Discount Rate
									1 ~ 19 pc(s).	20 ~ 30 pcs.
<b>SNAH A</b>		20A	32	20	90	37	21	33		
		25A	37	23	108	48	27	41		
		40A	53	37	116	53	41	58		
		50A	63	46	134	60	53	70		

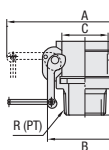
⚠ For orders larger than indicated quantity, please check with WOS.

### Male threaded Sockets



RoHS 10

Type	Material		
	Main Body	Cam	Ring
SNAM J	SCS14A	SMS1025	SUS304



Part Number	Type	No.	R (PT)	A	B	C	H	h	Unit Price	Volume Discount Rate
									1 ~ 19 pc(s).	20 ~ 30 pcs.
<b>SNAM J</b>		15A	1/2	110	52	32	52	32		
		20A	3/4	110	52	32	52	32		
		25A	1	125	60	37	59	38		
		40A	1 1/2	188	90	54	68	44		
		50A	2	197	97	63	76	51		

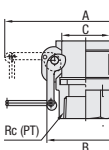
⚠ For orders larger than indicated quantity, please check with WOS.

### Female Tapped Sockets



RoHS 10

Type	Material		
	Main Body	Cam	Ring
SNAF J	SCS14A	SMS1025	SUS304



Part Number	Type	No.	Rc (PT)	A	B	C	H	h	Unit Price	Volume Discount Rate
									1 ~ 19 pc(s).	20 ~ 30 pcs.
<b>SNAF J</b>		15A	1/2	110	52	32	51	32		
		20A	3/4	110	52	32	51	32		
		25A	1	125	60	37	60	38		
		40A	1 1/2	188	90	54	69	45		
		50A	2	197	97	63	77	51		

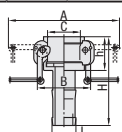
⚠ For orders larger than indicated quantity, please check with WOS.

### Hose Mounting Sockets



RoHS 10

Type	Material		
	Main Body	Cam	Ring
SNAH J	SCS14A	SMS1025	SUS304



Part Number	Type	No.	A	B	C	I	H	h	Unit Price	Volume Discount Rate
									1 ~ 19 pc(s).	20 ~ 30 pcs.
<b>SNAH J</b>		20A	110	52	32	21	86	32		
		25A	125	60	37	27	100	38		
		40A	188	90	54	41	110	46		
		50A	197	97	63	53	129	51		

⚠ For orders larger than indicated quantity, please check with WOS.



Ordering Example  
Part Number  
**TCSM25**  
**SNAMA20A**

⚠ Arm Locking Couplers are manufactured according to the US MIL Standards A-A-59326-1998 (MIL-C-27487-1992 previously), thus compatible with the same size products of the same standards from other manufacturers.