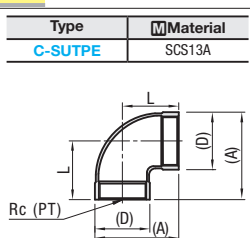


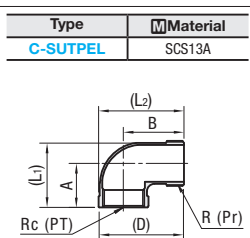
Points of comparison between similar products

① ISO Standard Equivalent, ② Thin, Lightweight, ③ Not RoHS Compliant

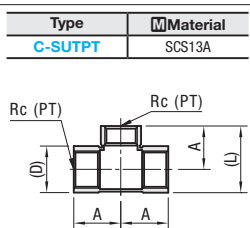
For similar parts P.1273



Part Number		Rc (PT)	(D)	L	(A)	Unit Price 1 - 9 pc(s).	Volume Discount Rate	
Type	No.						10 - 29 pcs.	30 - 50 pcs.
C-SUTPE	6A	1/8	15	17	24.5			
	8A	1/4	18.5	19	28.5			
	10A	3/8	22	23	34			
	15A	1/2	26.5	27	40.5			
	20A	3/4	32	32	48			
	25A	1	41.5	38	60			



Part Number		R, Rc(PT)	(D)	(L1)	(L2)	A	B	Unit Price 1 - 9 pc(s).	Volume Discount Rate	
Type	No.								10 - 29 pcs.	30 - 50 pcs.
C-SUTPEL	6A	1/8	15	21	33.5	17	26			
	8A	1/4	18.5	24.5	36.0	19	27			
	10A	3/8	22	30.5	40	23	29			
	15A	1/2	26.5	36.5	48.5	27	35			
	20A	3/4	32	44	56	32	40			
	25A	1	41.5	53	67	38	46			



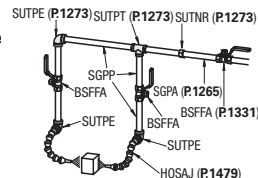
Part Number		Rc (PT)	(D)	(L)	A	Unit Price 1 - 9 pc(s).	Volume Discount Rate	
Type	No.						10 - 29 pcs.	30 - 50 pcs.
C-SUTPT	6A	1/8	15	24.5	17			
	8A	1/4	18.5	28	19			
	10A	3/8	22	34	23			
	15A	1/2	26.5	40.5	27			
	20A	3/4	32	48	32			
	25A	1	41.5	59	38			



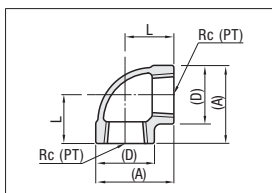
Ordering Example
Part Number
C-SUTPE20A



Example



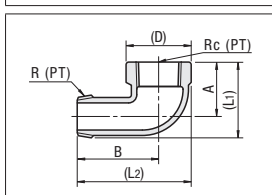
Minimum Thickness Dimension, Weight



90° Elbow

Thickness and weight are for reference, and should not be used as quality criteria.

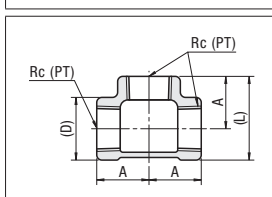
No.	Rc (PT)	Minimum Thickness (mm)		Weight (g)	
		Similar Part	C-VALUE Products	Similar Part	C-VALUE Products
6A	1/8	2.8	2.5	55	25
8A	1/4	3.2	2.9	50	40
10A	3/8	3.2	2.9	75	45
15A	1/2	3.5	1.6	120	70
20A	3/4	3.5	1.7	185	110
25A	1	3.5	1.9	295	200



Male/Female Elbows

Thickness and weight are for reference, and should not be used as quality criteria.

No.	R, Rc(PT)	Minimum Thickness (mm)		Weight (g)	
		Similar Part	C-VALUE Products	Similar Part	C-VALUE Products
6A	1/8	2.8	1.1	30	20
8A	1/4	3	1.5	40	30
10A	3/8	3	1.5	60	45
15A	1/2	3.5	2	85	70
20A	3/4	3.5	2	150	110
25A	1	3.5	2	240	190



Tees

Thickness and weight are for reference, and should not be used as quality criteria.

No.	Rc (PT)	Minimum Thickness (mm)		Weight (g)	
		Similar Part	C-VALUE Products	Similar Part	C-VALUE Products
6A	1/8	3.2	2.5	90	25
8A	1/4	3.2	2.9	80	45
10A	3/8	3.2	2.9	105	75
15A	1/2	3.2	1.6	165	100
20A	3/4	3.2	1.7	240	165
25A	1	3.4	1.9	410	320