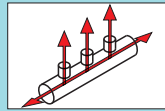


Pipe Manifolds

Socket Configurable Type



RoHS 10

	Type		Main Body	Material		Surface Treatment
	Female Thread Socket	Male Thread Socket		Socket		
				Male Thread	Female Thread	
Both Ends Male Thread	SGFF	-	SGP	SGP	S25C(S20C for M5)	Trivalent Chromate Electroless Nickel Plating
	SGFM	-				
	SUFF	SUFFA	SUS304TP	SUS304TP (SUS304 for M5)	SUS304	-
Both Ends Female Thread	SGFMF	SGFMFA	SGP	SGP	S25C(S20C for M5)	Trivalent Chromate
	SUFMF	-	SUS304TP	SUS304TP (SUS304 for M5)	SUS304	-

Welding may cause small deformations that accumulate when the products are used in connected stacks.

Thread: JIS B0203 R(PT)
(Max. Operating Pressure: 0.7MPa=7kgf/cm² or less)

* Drawing for 5 Circuit Type is selected.

Select A ~ E according to the number of holes (H). Specify from A to B when H=2, up to C when H=3, up to D when H=4 and up to E when H=5.

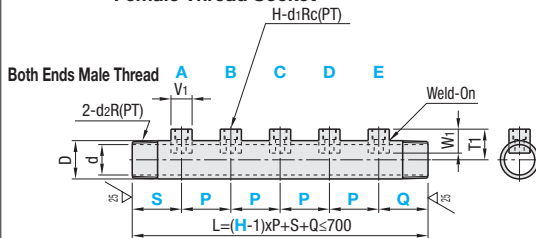
Applicable Fluid
Water, Air

V1 and T1 Dimensions				
d1 Rc(PT)	V1	W1	T1	
5 (M5)	10	13.4	D/2+W1-(L-H)	
1 (1/8)	15	17		
2 (1/4)	20	22		
3 (3/8)	25	24		
4 (1/2)	30	28		
6 (3/4)	35	31		

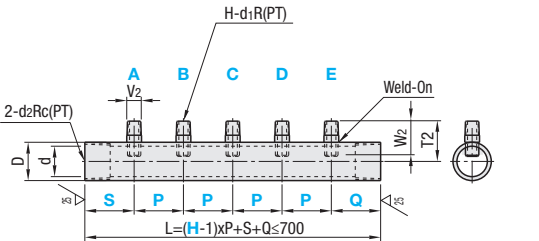
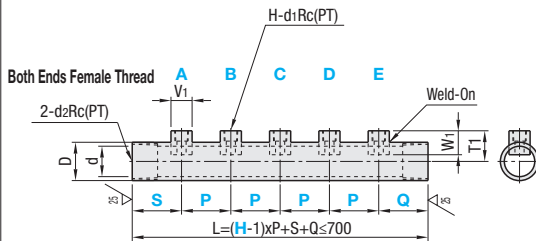
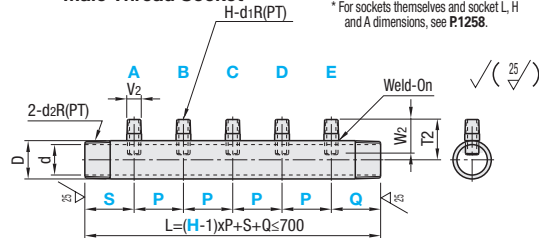
V2 and T2 Dimensions				
d1 R(PT)	V2	W2	T2	
5 (M5)	6	7.5	D/2+W2-A	
1 (1/8)	10.5	10		
2 (1/4)	13.8	15		
3 (3/8)	17.3	17		
4 (1/2)	21.7	20		
6 (3/4)	27.2	23		

* For sockets themselves and socket L, H and A dimensions, see P.1258.

Female Thread Socket



Male Thread Socket



Part Number		No.	H (Number of Holes)	P, S, Q 1mm Increment	Rc (PT), R (PT), M (Coarse) Selection A, B, C, D, E					d2 R(PT)	D	d	
Type	Female Thread Socket				Male Thread Socket	A	B	C	D			E	Material: SGP
Both Ends Male Thread	Female Thread Socket Male Thread Socket SGFF SGFM SUFF	15A	2	35~150	0 (No Hole)	5 (M5)	1 (1/8)			1/2	21.7	16.1	16.1
		20A	3	35~150	0 (No Hole)	5 (M5)	1 (1/8)	2 (1/4)		3/4	27.2	21.6	21.4
		25A	4	40~150	0 (No Hole)	1 (1/8)	2 (1/4)	3 (3/8)		1	34	27.6	27.2
		32A	5	50~150	0 (No Hole)	2 (1/4)	3 (3/8)	4 (1/2)		1 1/4	42.7	35.7	35.5
		40A		60~150	0 (No Hole)	3 (3/8)	4 (1/2)	6 (3/4)		1 1/2	48.6	41.6	41.2
Both Ends Female Thread	Female Thread Socket Male Thread Socket SGFMF SGFMFA SUFMF	15A	2	35 (45)~150	0 (No Hole)	5 (M5)	1 (1/8)			1/2	21.7	16.1	16.1
		20A	3	35 (45)~150	0 (No Hole)	5 (M5)	1 (1/8)	2 (1/4)		3/4	27.2	21.6	21.4
		25A	4	40 (50)~150	0 (No Hole)	1 (1/8)	2 (1/4)	3 (3/8)		1	34	27.6	27.2
		32A	5	50 (60)~150	0 (No Hole)	2 (1/4)	3 (3/8)	4 (1/2)		1 1/4	42.7	35.7	35.5
		40A		60 (70)~150	0 (No Hole)	3 (3/8)	4 (1/2)	6 (3/4)		1 1/2	48.6	41.6	41.2

Specify P, S and Q within the range of L=(H-1)xP+S+Q<=700. For Both Ends Female Thread Type, the minimum configurable values for S and Q are in ().

For A to E, specify 0, 1, 2, 3, 4, 5 or 6 indicated before (). When selecting 0, the pitch remains unchanged and the distance between sockets is 2xP.

All sockets of Female Thread Socket Type are female threaded, and all sockets of Male Thread Socket Type are male threaded. For ordering, see the Ordering Example and Minimum Pitch Chart below.



Part Number	H (Number of Holes)	P	S	Q	A	B	C	D	E
SUFF25A	3	P50	S50	Q50	A3	B2	C2		
SGFMF25A	5	P50	S50	Q50	A3	B2	C3	D2	E3
SGFMF25A	4	P50	S50	Q50	A3	B2	C0	D2	

For 3 Circuit
For 5 Circuit
When the number of circuits is 4 and the C port is not needed, (Number of sockets is 3)

Select A ~ E according to the number of holes (H). Specify from A to B when H=2, up to C when H=3, up to D when H=4 and up to E when H=5.

Socket Pitch (P) Minimum Pitch Chart

Size	M5	1/8	1/4	3/8	1/2	3/4
M5	35	35	35	38	40	43
1/8	35	35	38	40	43	45
1/4	35	38	40	43	45	48
3/8	38	40	43	45	48	50
1/2	40	43	45	48	50	53
3/4	43	45	48	50	53	55

Specify a pitch larger than above values.

No.	Unit Price							
	Female Thread Socket / Male Thread Socket							
	Body Material: SGP				Body Material: SUS304TP			
	H2	H3	H4	H5	H2	H3	H4	H5
15A								
20A								
25A								
32A								
40A								