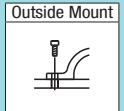
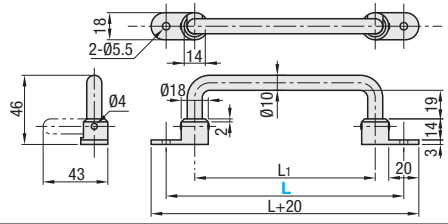


Folding Pull Handles / Pull Handles with Caps / Aluminum Tube Pull Handles



Type	M Material	S Surface Treatment
UWFASN	S45C	Chrome Plating
UWFASNS	SUS304	Buffing



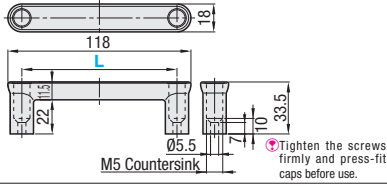
RoHS10

Part Number	Type	L	L1	Allowable Load (N)	Mass (g)	Unit Price	
						UWFASN	UWFASNS
138	UWFASN (Steel)	138	100	650	150		
158	UWFASN (Steel)	158	120	550	160		
180	UWFASNS (Stainless Steel)	180	142	520	180		
218	UWFASNS (Stainless Steel)	218	180	500	200		

Ordering Example Part Number UWFASN138



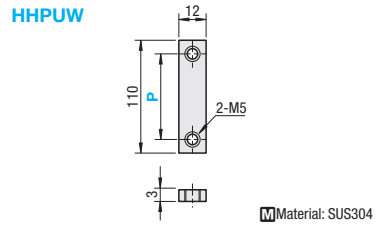
Type	Handles		Cap	
	M Material	S Surface Treatment	M Material	Color
HHDG	ADC12	Baked Paint	ABS	White
HHDGS	SUS304 Equivalent	Buffing	ABS	White



RoHS10

Part Number	Mass (g)	Applicable Screw	Unit Price
HHDG	62	Flat Head Screw M5	2

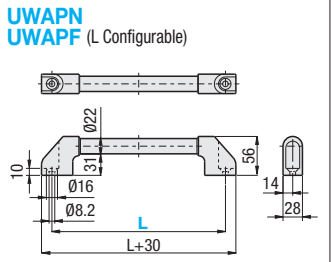
Ordering Example Part Number HHDG100



RoHS10

Part Number	Applicable Handle	Unit Price	Volume Discount Rate
HHPUW	HHDG100 HHDGS100	1 ~ 9 pc (s)	10 ~ 100

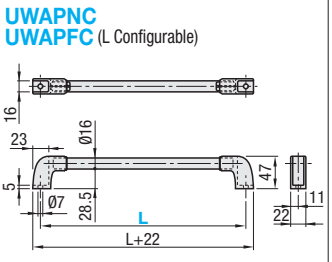
Ordering Example Part Number HHPUW100



RoHS10

Part Number	L	Applicable Screw	Unit Price
150	150	Flat Head Screw M8	
200	200		
250	250		
300	300		
400	400		
500	500		
600	600		

Part Number	L (mm Increment)	Applicable Screw	Unit Price
100-150	100-150	Flat Head Screw M8	
151-200	151-200		
201-250	201-250		
251-300	251-300		
301-400	301-400		
401-500	401-500		
501-600	501-600		



RoHS10

Part Number	L	Applicable Screw	Unit Price
100	100	Hex Socket Head Cap Screw M6	
150	150		
200	200		
250	250		
300	300		

Part Number	L (mm Increment)	Applicable Screw	Unit Price
100-150	100-150	Hex Socket Head Cap Screw M6	
151-200	151-200		
201-250	201-250		
251-300	251-300		

Ordering Example Part Number - L UWAPN 150 UWAPFC 185
 * is not necessary for L Fixed Type.