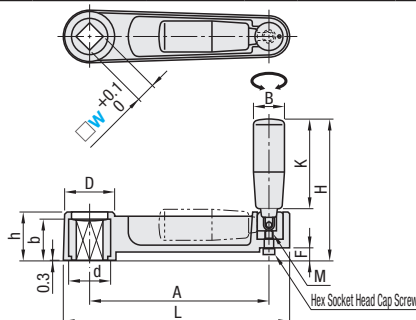


Retractable Revolving Crank Handles with Square Bore / Revolving Crank Handles with Square/Round Bore / Revolving Crank Handles

Retractable Revolving Crank Handles with Square Bore



Type	Body		Hub		Handle		Handle Thread		Included Screw	
	Material	Material	Surface Treatment	Material	Material	Surface Treatment	Material	Surface Treatment	Material	Surface Treatment
SSCH	Reinforced Nylon (Glass Fibers Contained)	SS400	Black Oxide	Phenol Resin	SS400	Trivalent Chromate	Structural Alloy Steel	Trivalent Chromate		



Part Number Type	W	L	A	H	h	D	K	F	M	B	d	b	Reference Mass (g)	Unit Price
10	108	80	68	26	27.5	40	6	5	18	22	22	145		
12	130	100	72	30	31	40	10	5	18	27	27	210		
14	164.5	130.5	102.5	35	36.2	65.3	9	6	23	30	30	310		
17	198.5	161	122.5	40	40.5	80.3	12	8	26	34	34	420		

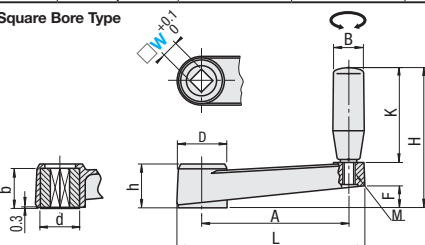
Revolving Crank Handles with Square / Round Bore



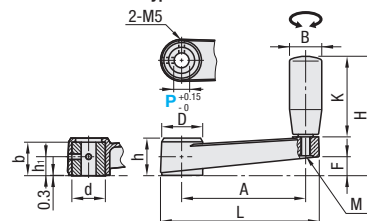
RoHS 10

Type	Hub		Main Body, Handle		Screw		Handle Thread	
	Material	Surface Treatment	Material	Material	Material	Surface Treatment	Material	Surface Treatment
MBCH	SS400	Black Oxide	Reinforced Nylon (Glass Fibers Contained)	Brass (Insert)	SS400	Trivalent Chromate		
MBCR								
MBCHS	SUS304	-						

Square Bore Type



Round Bore Type



Part Number Type	W	P	L	A	H	h	D	K	F	M	B	d	b	h1	Reference Mass (g)	Unit Price		
																Square Bore		Round Bore
																MBCH	MBCHS	MBCR
8	8		85.5	64.5	63	23	24.5	40	10	6	22	18	19	10	76			
10	10		105	80	76	26	27.5	50	13.5	8	22	22	11.5	102				
12	12		128	100	94.5	30	31	64.5	14.5	8	27	27	14.5	184				
14	-		161.5	130.5	114.5	35	36.2	79.5	19	8	30	30	-	259				
17	-		196	161	128.5	40	40.5	88.5	22	10	34	34	-	369				

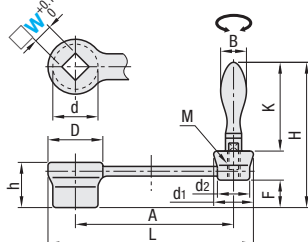
Revolving Crank Handles



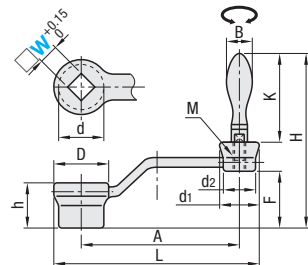
RoHS 10

Type	Straight Type		Offset Type		Material	Surface Treatment
	Material	Surface Treatment	Material	Surface Treatment		
NSCH	FC200	Chrome Plating				
NOCH						

Straight



Offset



Part Number Type	W	L	A	H		h	D	d	d1	d2	K	F		M	B	Reference Mass (g)	Unit Price	
				NSCH	NOCH							NSCH	NOCH					
				NSCH	NOCH													
8	86	63.5	75	94	22	27	22	18	14	49	13	32	5	13	105			
10	105	79	85	103	24	30	25	22	17	55	15	33	6	16	150			
12	128	98	105.7	126.7	28	34	28	26	20	70.7	17	38	8	20	230			
14	162	128	123.3	147.3	30	40	33	28	22	87.3	17	41			360			
17	198	159.5	128.3	157.3	34	45	37	32	25	87.3	21	50	10	25	510			
19															500			
22	212	170	129.3	160.3	36	50	40	34	27		22	53	10		680			

Ordering Example
 Part Number
 SSCH10
 MBCH10
 NSCH8