

# Leveling Mounts

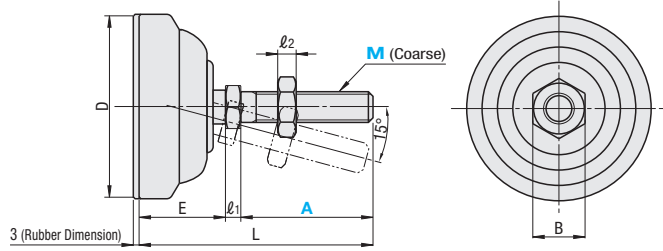
## Resin Rubber Type

### Resin Rubber Type



**Steel**  
**AJPD**  
**AJPDR** (With Rubber)

**Stainless Steel**  
**AJPDS**  
**AJPDSR** (With Rubber)



#### Close-up of Pad Bottom and Rubber Pad.

Use of the Rubber Pad Type in full ground contact will be less slippery.



☺ Tilttable in all 360° directions.

Type	Pad	Thread, Nut		Rubber	
	Material	Material	Surface Treatment	Material	Hardness
AJPD	Reinforced Polyacetal	SS400 Equivalent	Trivalent Chromate	-	-
AJPDR		SUS304	-	Nitrile Rubber	Shore A70
AJPDS				-	-
AJPDSR				Nitrile Rubber	Shore A70

Part Number	Type	M-A	L	D	l1	l2	E	B	Allowable Vertical Load (kN)	Mass (g)	Unit Price			
											AJPD	AJPDR	AJPDS	AJPDSR
Steel <b>AJPD</b> <b>AJPDR</b> (With Rubber)		<b>10-70C</b>	95	40	6	8	19	17	3.0	76				
		<b>10-100C</b>	125											
		<b>12-70C</b>	98		7.5	10	20	19		108				
		<b>12-100C</b>	128											
		<b>16-100C</b>	130	10	13		24	130						
		<b>10-70D</b>	96	50	6	8	20	17		182				
		<b>10-100D</b>	126											
		<b>12-60D</b>	89.5		7.5	10	21.5	19		200				
		<b>12-70D</b>	99.5											
		<b>12-100D</b>	129.5		10	13		24		210				
		<b>16-80D</b>	111.5							220				
	Stainless Steel <b>AJPDS</b> <b>AJPDSR</b> (With Rubber)		<b>16-130D</b>	161.5						265				
		<b>12-70E</b>	104	60	7.5	10	26	19	260					
		<b>12-100E</b>	134											
		<b>16-70E</b>	106		10	13	24	290						
		<b>16-100E</b>	136											
		<b>16-150E</b>	186					300						
		<b>20-100E</b>	139	12.5	16	27	30	6.0	320					
		<b>20-150E</b>	189											
	<b>20-180E</b>	219												



Ordering Example

Part Number  
**AJPD12-100C**