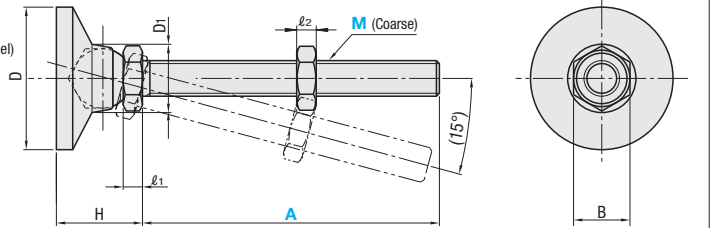


Leveling Mounts

Pivot Type / Tapped Socket Type



LEMNT (Steel)
LEMNS (Stainless Steel)



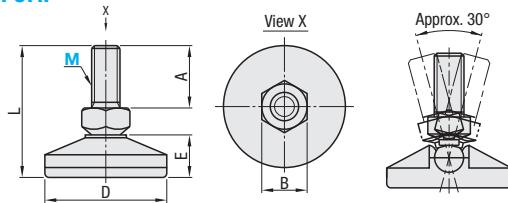
Type	Pad		Thread, Nut	
	M Material	S Surface Treatment	M Material	S Surface Treatment
LEMNT	S45C	Trivalent Chromate	SS400 Equivalent	Trivalent Chromate
LEMNS	SUS304	-	SUS304	-

Tiltable in all 360° directions.

Part Number	Type	M-A	D	D1	H	l1	l2	B	Allowable Vertical Load (kN)	Mass (g)	Unit Price	
											LEMNT	LEMNS
LEMNT (Steel)		10-75	32	21	22	6	8	17	11.0	342		
		10-100										
		12-75										
LEMNS (Stainless Steel)		12-100	48	23	29	7.5	10	19	16.0	378		
		16-100										
		16-130										
			64	27	32	10	13	24	28.3	430		
										445		



FJRP



Thread
M Material: Carbon Steel
S Surface Treatment: Trivalent Chromate

M Material	
Main Body	SUS304
Bottom	Polyamide



Example

When a leg has an angle



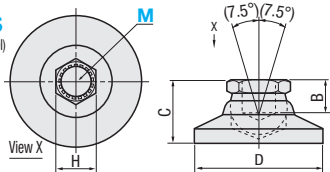
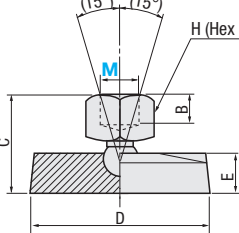
When floor surface is curved



LEMN
(Nylon)

LEMT
(Steel)

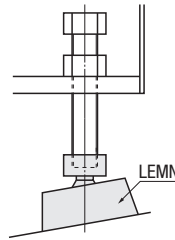
LEMS
(Stainless Steel)



Type	M Material	S Surface Treatment	Socket	S Surface Treatment
LEMN	Nylon Plastic	-	SUM24	Trivalent Chromate
LEMT	Carbon Steel for Mechanical Structure	Electroless Nickel Plating	SUM23	Electroless Nickel Plating
LEMS	SUS303	-	SUS303	-



Example



Part Number	Type	M (Coarse)	A	L	D	B	E	Allowable Vertical Load (kN)	Mass (g)	Unit Price
FJRP		6	14	31	25	8	9.7	0.59	11	
		8	19	37.5	30	10	11.2	1.08	21	
		10	20	42.5	40	13	13.7	1.57	38	
		12	25	51	50	17	16	3.14	70	

Part Number	Type	M (Coarse)	B	C	D	E	H	Allowable Vertical Load (kN)	Mass (g)	Unit Price	
											LEMN
LEMN (Nylon)		10	9.5	39.0	50	18	16	15.9	17.1		
		12	12.7	41.0							
		16	14.2	44.5							



Part Number	Type	M (Coarse)	H	C	D	B	Allowable Vertical Load (kN)	Mass (g)	Unit Price	
									LEMT	LEMS
LEMT (Steel)		6	10	14	19	4	3.1	17		
		8	13	18	25	8	4.1	34		
		10	17	22	32	10	15.4	65		
LEMS (Stainless Steel)		12	19	29	48	11	20.5	167		
		16	22	32	64	11	24.6	354		

Kgf (Load)=Nx0.101972