

Casters with Leveling Mounts

Antivibration

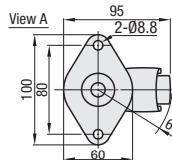
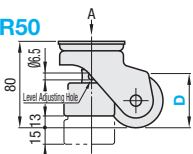
Antivibration



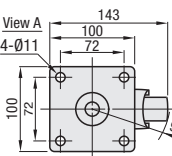
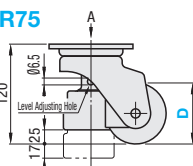
RoHS10

Type	Main Body		Wheel	Leveling Mount	Bearing
	M Material	S Surface Treatment	M Material	M Material	
CLAR	SPHC	Zinc Plating	Nylon 6	Oil Resistant Rubber	None

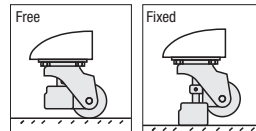
CLAR50



CLAR75



How to Use



Free : Insert a screwdriver into a level adjusting hole and turn counterclockwise.

Fixed : Insert a screwdriver into a level adjusting hole and turn clockwise.

Level Adjustment : Adjustable within ranges of: 15mm for CLAR50, and 17mm for CLAR75.

Kgf (Load)=Nx0.101972

Part Number	Allowable Load	Unit Price
Type	N	
CLAR	50	588
	75	981



Ordering Example
Part Number
CLAR50

Antivibration Heavy Load Type

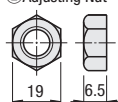


Registered Design

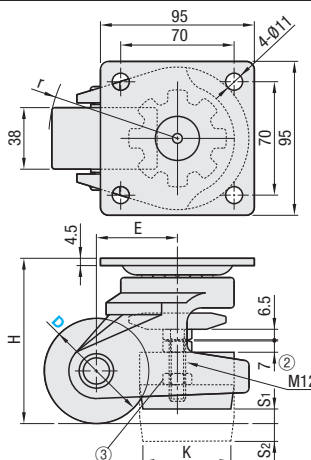
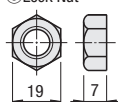
RoHS10

CLDK

② Adjusting Nut



③ Lock Nut



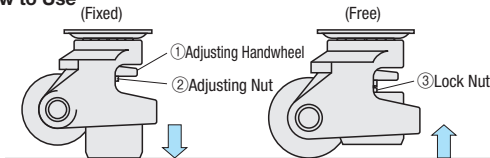
Main Body		Wheel	Leveling Mount	Integrated Handwheel	Bearing
M Material	S Surface Treatment	M Material	M Material	S Surface Treatment	M Material
ADC12	Baked Paint (Silver)	Reinforced Nylon (Black)	SS400	Trivalent Chromate	Polycarbonate

Part Number	Type	D	Wheel Material	H	Leveling Mount			E	r	Allowable Load	Mass (g)	Unit Price
					S1	S2	K					
CLDK	65	75	N (Reinforced Nylon)	102	9	11	52	50	80	2500	1500	1 ~ 50 pcs.
				120	12	12	54	52	92	3500	1800	



Ordering Example
Part Number - Wheel Material
CLDK65 - N

How to Use



* Adjusting handwheel and adjusting nut are integrated.

• Fixed

- Turn the handwheel to lower the pad to the ground. (Temporary tightening)
- After confirming the height, fully tighten the nut beneath the handwheel. Standing on the pad only, the caster is elevated above the ground.
- Tighten the lock nut. (Torque applied by the lock nut gives loosening prevention effect against vibration.)

• Free

- Loosen the lock nut.
- Loosen the adjusting nut to release the screw.
- Turn the handwheel to raise the pad and lower the caster to the ground.



Example



① Turn the adjusting handwheel and raise / lower the pad.