

Caster Dual Wheel Type

Heavy Load Steel / Stainless Steel

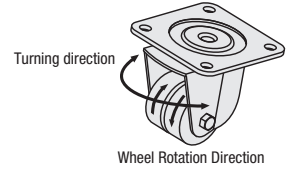
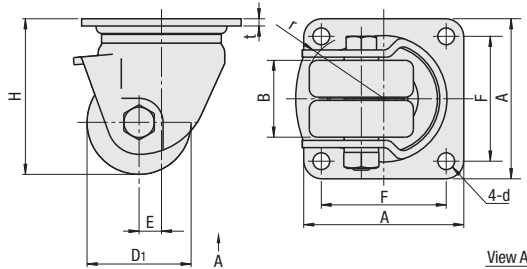
Heavy Load - Steel -

CWMJ

Main Body		Wheel	Bearing
M	S	M	Swiveling Part
Material	Surface Treatment	Material (Color)	Wheel
SPHC	Trivalent Chromate	MC Nylon (Blue)	Incorporated



Example



Dual wheel casters exhibit better load capacity and swiveling than single wheel.

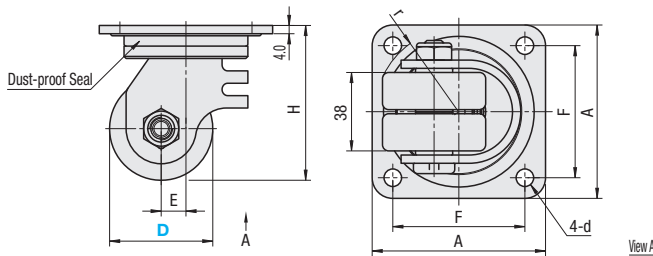
RoHS 10

Main Body	Part Number		Wheel Material	H	D1	B	A	F	d	t	E	r	Allowable Load (N)	Mass (g)	Unit Price
	Type	No.													
Swivel	CWMJ	50	N (MC Nylon)	75	42	38	84	64	8.5	3.2	12	49	4000	812	
		65		93	57	48	100	78	10.5	4.5	14	57	5000	1530	
		75		102	65								6000	1620	

Heavy Load - Stainless Steel -

CWG

Main Body		Wheel	Seal	Bearing
M	S	M	M	Swiveling Part
Material	Surface Treatment	Material (Color)	Material	Wheel
SUS304	-	Monomer Casting Nylon (Blue) Electrically Conductive MC Nylon (Black)	Polyacetal	Incorporated



RoHS 10

Main Body	Part Number		Wheel Material	H	A	F	d	E	r	Allowable Load (N)	Mass (g)	Unit Price	
	Type	D										Monomer Casting Nylon	Electrically Conductive MC Nylon
Swivel	CWG	50	N (Monomer Casting Nylon) D (Electrically Conductive MC Nylon)	75	84	64	8.5	12	43	4000	760		
		65		93	100	78	10.5	15	54	5000	1060		
		75		102					58	6000	1120		



Ordering Example

Part Number	-	Wheel Material
CWMJ50	-	N
CWG50	-	D