

Casters

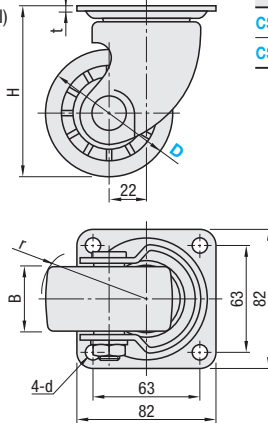
Medium and Heavy Load / Heavy Load

Medium and Heavy Load

CSHN-S
CSHNS-S
(Stainless Steel)



RoHS 10



Type	Main Body		Wheel	Bearing	
	Material	Surface Treatment	Material (Color)	Swiveling Part	Wheel
CSHN-S	SPHC	Trivalent Chromate	Reinforced Plastic (Black)	Incorporated	Incorporated
CSHNS-S	SUS304	-	Phenol (Black) MC Nylon (Blue)	Incorporated	Incorporated

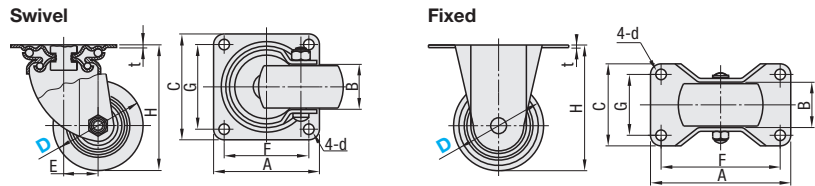
Main Body	Part Number		Wheel Material	H	d	r	B	t	Allowable Load (N)	Mass (g)	Unit Price		
	Type	D									H	P	N
Swivel	CSHN-S	50	H (Reinforced Plastic) P (Phenol) N (MC Nylon)	79	8.8	49	38	3.2	3000	700			
		65				56	40			750			
		75				61	40			850			
	CSHNS-S	50		79	8.8	49	38	3.0	2500	670			
		65				56	40			715			
		75				61	40			810			

Heavy Load



RoHS 10

Type	Main Body		Wheel	Bearing	
	Swivel	Fixed	Material		Surface Treatment
CJH	CKH	SPHC	Trivalent Chromate	Special Reinforced Plastic (Black)	Incorporated
CJHB	CKHB				



Swivel

Part Number	Type	D	CJH	CJHB	B (Wheel Mount Width)	H	A	C	F	G	d	E	t	Allowable Load N	Unit Price	
															CJH	CJHB
CJH CJHB	*50	28	29	68	70	54	54	36	6.5	25	2.3	1569				
	65			92	90	90	71	71	10.5	30	3.2	2942				
	75	38	39	106								3923				

Fixed

Part Number	Type	D	CKH	CKHB	B (Wheel Mount Width)	H	A	C	F	G	d	t	Allowable Load N	Unit Price	
														CKH	CKHB
CKH CKHB	*50	28	29	68	80	50	66	36	6.5	25	2.3	1569			
	65			92	111	67	91	47	10.5	30	3.2	2942			
	75	38	39	106	123	72	103	52				3923			

* Only CJH50 and CKH50 have no bearings.

Kgf (Load)=Nx0.101972

Ordering Example: Part Number - Wheel Material
 CSHN-S75 - H
 CJH75