

Painted Panels

Ventilation Hole

RoHS10

■ Powder painted panels with vent holes excellent in both appearance and corrosion resistance. (Baked painted sheet metal products of 2012 Catalog are now HP listed.)



Type	Material	Surface Treatment
PAPDK	SPHC	Powder Paint
PAPDJ		

Standard Type

PAPDK (Standard Type)
PAPDJ (Wide Opening Type)

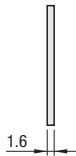
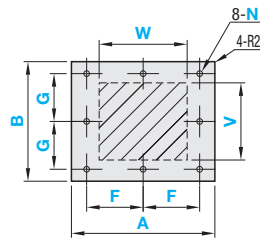
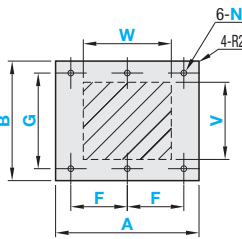
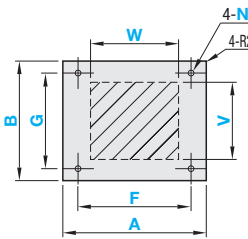
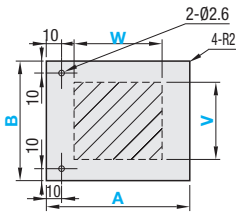
Hole Machined Type

-4 Holes-4H

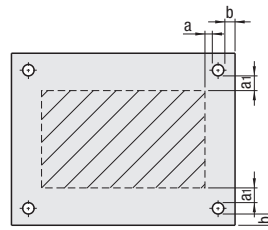
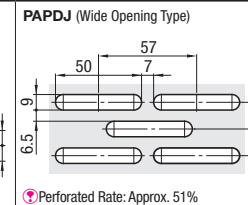
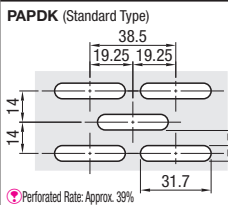
-6 Holes-6H

-8 Holes-8H

• A, B Dimension Tolerance ±0.5
• Plate Thickness Tolerance ±0.2



Details of Ventilation Holes



⦿ Fabricating Conditions of Round Holes
a ≥ 5
a1 ≥ 5
b ≥ 5

Hole Machining Details

Screw Nominal Dia.	N (Round Hole)				
	3	4	5	6	8
d	3.5	4.5	5.5	6.5	9

Standard Type

Part Number Type	1mm Increment		1mm Increment		Selection Paint Color
	A	B	W	V	
PAPDK (Standard Type) PAPDJ (Wide Opening Type)	200~1200	200~1000	100~950	100~950	U2570B U2280D U2290D U2580B U2785B U2290B UN95 UN10

⦿ Since the vent hole dimensions (Perforation rate) are fixed, the actual W and V dimensions may be smaller than specified.

Hole Machined Type

Part Number Type	Nominal	1mm Increment		1mm Increment		1mm Increment		Nominal Dia. N	Selection Paint Color
		A	B	F	G	W	V		
PAPDK (Standard Type) PAPDJ (Wide Opening Type)	4H 6H 8H	200~1200	200~1000	9~1186 (4H Type) 9~593 (6H Type) 57~593 (8H Type)	9~986 (4H Type) 114~986 (6H Type) 57~493 (8H Type)	100~950	100~950	3 4 5 6 8	U2570B U2280D U2290D U2580B U2785B U2290B UN95 UN10

⦿ Since the vent hole dimensions (Perforation rate) are fixed, the actual W and V dimensions may be smaller than specified.

■ Paint Color Type (All finished in semi-gloss, except for UN95. UN95 only is full gloss.): Specified by Japan Paint Manufacturers Association Color Code 2007 Edition

Paint Color			
U2570B Approx. Munsell No.5Y7/1	U2280D Approx. Munsell No.2.5Y8/2	U2290D Approx. Munsell No.2.5Y9/2	U2580B Approx. Munsell No.5Y8/1
U2785B Approx. Munsell No.7.5Y8.5/1	U2290B Approx. Munsell No.2.5Y9/1	UN95 Approx. Munsell No.N9.5	UN10 Approx. Munsell No. N1