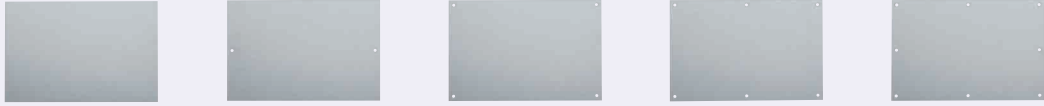


# Steel Panels

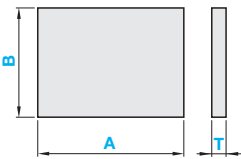
RoHS10



Type	Material	Surface Treatment
PAST	SS400	Zinc Plating

## Standard Type

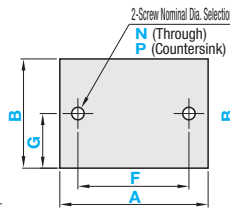
PAST



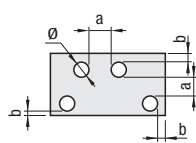
- $A \geq B$
- Plating is not applied to end faces and drilled holes.

## Hole Machined Type

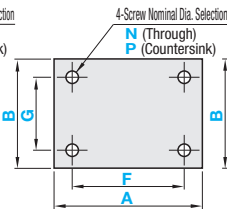
2 Holes 2H



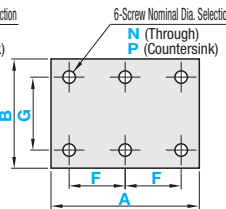
- Fabricating Conditions of Round Holes:  $a \geq 5$   $b \geq 2.5$
- Through Hole:  $d$  is applied for the  $\emptyset$  (hole dia.).
- Countersink:  $d_1$  is applied for the  $\emptyset$  (hole dia.).



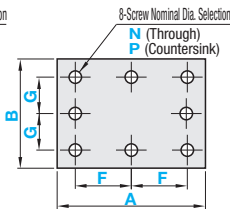
4 Holes 4H



6 Holes 6H

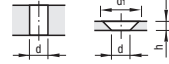


8 Holes 8H



### Hole Machining Details

N (Through) P (Countersink)



Screw Nominal Dia	3	4	5	6	8
d	3.5	4.5	5.5	6.5	8.5
d1	-	9.5	-	-	-
h	-	2.3	-	-	-

### Accuracy Standards

- T Dimension Tolerance
 

T	1.0	1.6	2.3
	$\pm 0.06$	$\pm 0.08$	$\pm 0.09$
- A, B Tolerance
 

1000 or Less	$\pm 0.5$
More than 1000	$\pm 1.0$

## Standard Type

Part Number	1mm Increment	T	
Type	A	B	Selection
PAST	50-1200	50-1000	1.0
			1.6
			2.3

## Hole Machined Type

Part Number	Nominal	1mm Increment		T	1mm Increment		Screw Nominal Dia.	
		A	B		F	G	N (Through)	P (Countersink)
PAST	2H 4H 6H 8H	50-1200	50-1000	1.0	9~1191 (2H, 4H Type) 9~595 (6H, 8H Type)	5~995 (2H Type) 9~991 (4H, 6H Type) 9~495 (8H Type)	3	-
				1.6			4	-
				2.3			6	4



Ordering Example  
**Standard Type**  
 Part Number - A - B - T  
 PAST - 600 - 400 - 1.0

**Hole Machined Type**  
 Part Number - A - B - T - F - G - Screw Nominal Dia.  
 PAST4H - 800 - 600 - 2.3 - F700 - G500 - N6



Alterations  
 Part Number - A - B - T - F - G - Screw Nominal Dia. - (XC, YC, CN)  
 PAST4H - 800 - 80 - 1.0 - F50 - G60 - N4 - XC10

	Hole Position from Left	Hole Position from Bottom	Relief at Four Corners
Alterations			
Code	XC	YC	CN
Spec.	XC=1mm Increment • $5 \leq XC \leq 1186$ • (2H, 4H Type) $d(d_1)/2 + 2.5 \leq XC \leq A - F - d(d_1)/2 - 2.5$ • (6H, 8H Type) $d(d_1)/2 + 2.5 \leq XC \leq A - 2F - d(d_1)/2 - 2.5$	YC=1mm Increment • $5 \leq YC \leq 986$ • (4H, 6H Type) $d(d_1)/2 + 2.5 \leq YC \leq B - G - d(d_1)/2 - 2.5$ • (8H Type) $d(d_1)/2 + 2.5 \leq YC \leq B - 2G - d(d_1)/2 - 2.5$ • Not applicable to 2H Type	CN=1mm Increment Machines relief at 4 corners. • $5 \leq CN \leq 50$ Ordering Code: CN=25 ... CN25