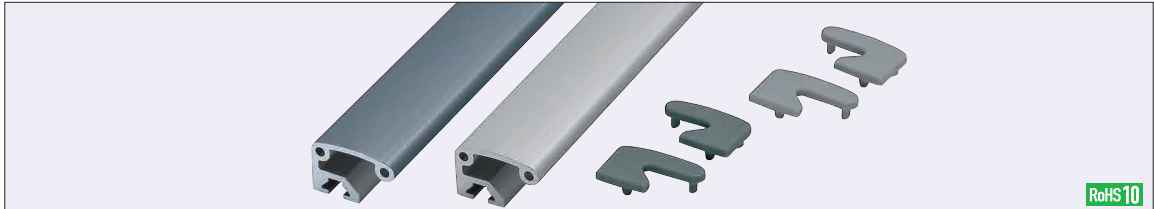
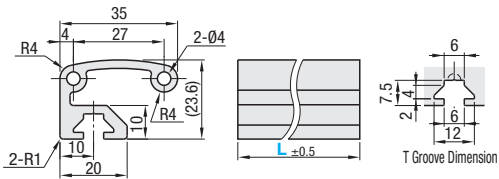


# Grip Handles for Aluminum Extrusions / Reinforcement Covers

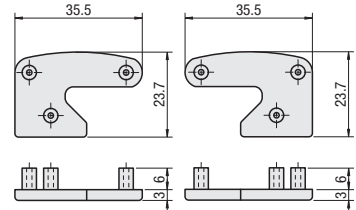


## Handle HFHDL5-35 HFHDLB5-35 (Black Anodize)



Applicable nut is HNTT5.

## Handle Cover HFC5-35L HFC5-35R



(Handle) **M** Material: A6N01SS-T5  
 (Handle) **S** Surface Treatment: Anodize  
 (Handle Cover) **M** Material: Polyamide (Black, Light Gray)

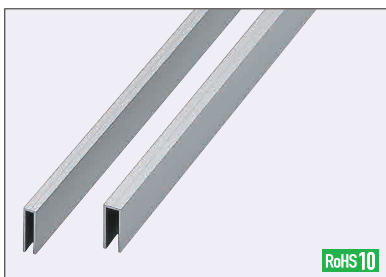
### Handle

Part Number	L 1mm Increment	Mass kg/m	Sectional Area mm <sup>2</sup>	Unit Price Less than 300mm 1 ~ 50 pc(s).	Unit Price/m 300mm or more 1 ~ 50 pc(s).
HFHDL5-35 HFHDLB5-35 (Black Anodize)	50~2000	0.73	271		

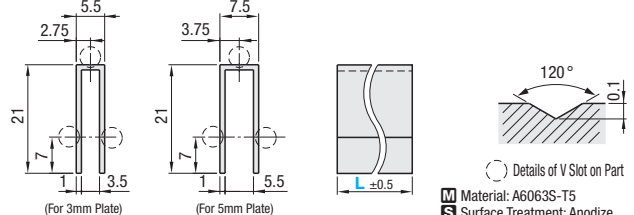
### Handle Cover

Part Number	Color	Mass (g)	Unit Price 1 - 9 pc(s).	Volume Discount Rate 10 - 19	Volume Discount Rate 20 - 50
HFC5-35L	<b>B</b> (Black)	1.9			
HFC5-35R	<b>S</b> (Light Gray)				

Light gray is the default color unless specified.



## Reinforcement Covers HFPCV3 HFPCV5



**M** Material: A6063S-T5  
**S** Surface Treatment: Anodize

Part Number	L 1mm Increment	Mass kg/m	Sectional Area mm <sup>2</sup>	300mm or Less		300mm or More	
				Unit Price 1 ~ 9 pc(s).	Volume Discount Rate 10-19 20-50	Unit Price/m 1 - 9 pc(s).	Volume Discount Rate/m 10-19 20-50
HFPCV	3	0.12	45.4				
	5	0.13	47.4				

**Ordering Example**

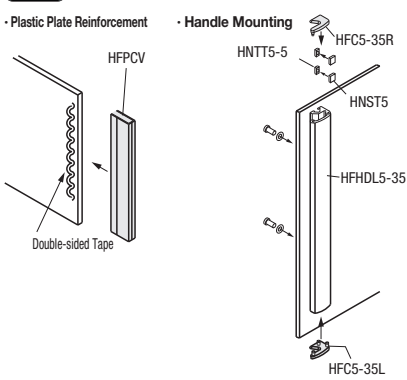
Part Number - L, Color

HFHDL5-35 - 400

HFC5-35L - S

HFPCV3 - 800

### Example



**Alterations**

Part Number - L - (Alteration Code)

HFPCV5 - 300 - LCT45

Alterations	45° Cut	
	LCT45	RCT45
Spec.	One End 45° Miter Cut Ex. LCT45	
HFPCV	3	450
	5	450