

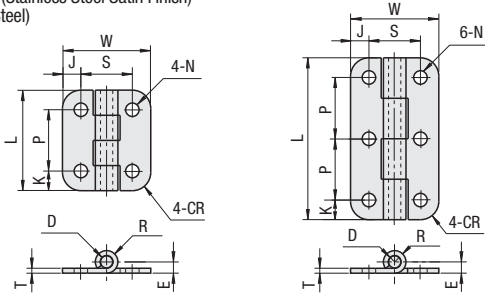
# Stainless Steel Hinges / Steel Hinges

## Flat Hinges



RoHS10

SHHPS (Stainless Steel)  
SHHPSK (Stainless Steel Satin Finish)  
SHHPT (Steel)



When mounting the hinges on panels, Hinge Nuts are recommended on P.811.

Type	Material	Surface Treatment
SHHPS	SUS316	-
SHHPSK	SUS304	Satin Finish
SHHPT	SPCC or SPHC	Chrome Plating

Part Number	Number of Holes on One Side	* Allowable Load		Mass g	L	W	K	P	J	S	N	T	E	R	CR	D	SHHPS		SHHPSK		
		kg	N														Unit Price	Volume Discount Rate	Unit Price	Volume Discount Rate	
SHHPS SHHPSK	5	2	9	88	43	41	36	8	25	7.5	21	5.5	2	4.6	4.6	7.5	5				
		3	11	108	70	66															
	6	2	12	117	60	48	48	9	30	8	32	6.5	3	5.6	5.6	10	6				
		3	15	147	98	78															
	8	2	25	245	130	59	62	11	37	10	42	6.5	3	6.1	6.1	10	6				
		3	38	372	230	96															
	845	2	30	294	190	70	80	13.5	43	16.5	47	6.5	3	5.6	5.6	10	6			-	-
		3	40	392	325	113															

Part Number	Number of Holes on One Side	* Allowable Load		Mass g	L	W	K	P	J	S	N	T	E	R	CR	D	Unit Price		Volume Discount Rate		
		kg	N														1-8 pc(s).	9-100	1-8 pc(s).	9-100	
SHHPT	5	2	9	88	36	41	36	8	25	7.5	21	5.5	2	4.6	4.6	4	5				
		3	11	108	59	66															
	6	2	12	117	50	48	48	9	30	8	32	6.5	3.2	6.5	6.5	5	6				
		3	15	147	83	78															
	8	2	25	245	124	59	62	11	37	10	42	6.5	3.2	6.5	6.5	5	6				
		3	38	372	207	96															
	845	2	30	294	181	70	80	13.5	43	16.5	47	6.5	3.2	6.5	6.5	5	6				
		3	40	392	298	113															

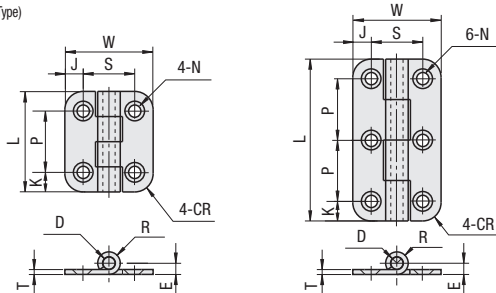
\* The allowable load is the value when 2 pieces are used.

## Flat Hinges (Countersunk Type)



RoHS10

SHHPSD  
(Countersunk Type)



Material: SUS304

Part Number	No.	Number of Holes on One Side	* Allowable Load		Mass g	L	W	K	P	J	S	Through	Countersink	T	E	R	CR	D	Unit Price		Volume Discount Rate	
			kg	N															1-8 pc(s).	9-100	1-8 pc(s).	9-100
SHHPSD	5	2	9	88	34	41	36	8	25	7.5	21	5.5	8.6 (For M4)	2	4.6	4.6	4	5				
		3	11	108	56	66																
	6	2	12	117	49	48	48	9	30	8	32	6.5	10.6 (For M5)	3	6.1	6.1	5	6				
		3	15	147	80	78																
	8	2	25	245	111	59	62	11	37	10	42	6.5	10.6 (For M5)	3	6.1	6.1	5	6				
		3	38	372	185	96																
	845	2	30	294	162	70	80	13.5	43	16.5	47	6.5	10.6 (For M5)	3	6.1	6.1	5	6				
		3	40	392	266	113																

\* The allowable load is the value when 2 pieces are used.

Ordering Example: Part Number SHHPS6 - Number of Holes on One Side 2

Alterations: Part Number SHHPS6 - (Number of Holes on One Side) 3 - (SET)

Alteration	Code	Spec.	Hinge	No.	Number of Holes on One Side
Applicable Screw and Nut Set	SET	Applicable screws and nuts come in a set. Stainless steel screws and nuts are included.	SHHPS SHHPSK SHHPT SHHPSD	5	2
					3
				6	2
					3
				8	2
					3
				845	2
					3