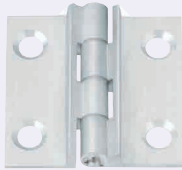


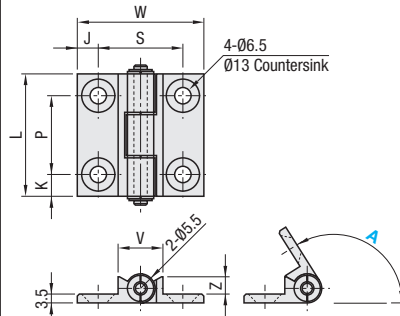
Stop Hinges / Low Dust Generation Hinges

Stop Hinges



RoHS10

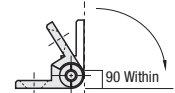
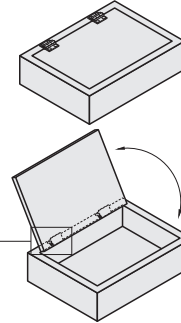
HHPSNH



M Material: A6063-T5 Bushing: Polyacetal
S Surface Treatment: Clear Anodize

Example

The lid of the box stops at a constant bevel.



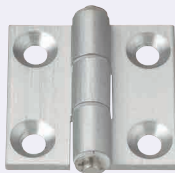
When a hinge is positioned within 90°, it automatically falls to be flat.

When mounting the hinges on panels, Hinge Nuts are recommended on P.811.

Part Number Type	A (Angle) No.	* Allowable Load		Mass g	L	W	K	P	J	S	V	Z	Screw, Nut			Unit Price		Volume Discount Rate	
		kg	N										Screw	Quantity	Nut	Quantity	1-8 pc(s).		9-50
HHPSNH	6	120	10	98	47	48	8.5	30	8	32	17	6.8	Flat Head Screw 6-10	4	HNNT6-6	4			
		135																	5.4
		150																	4.2
	8	120	10	98	63	62	13	37	10	42	21	7.3	Flat Head Screw 6-12	4	HNNT8-6	4			
		135																	5.8
		150																	4.5

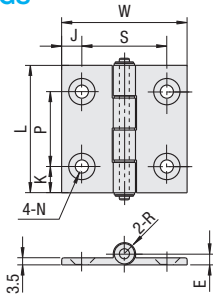
* The allowable load is the value when 2 pieces are used.

Low Dust Generation Hinges

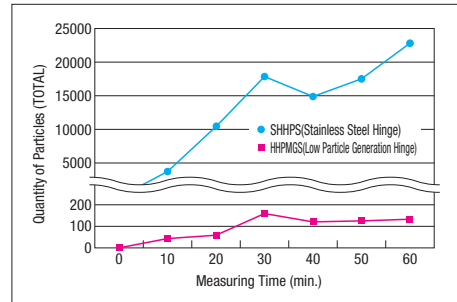


RoHS10

HHPMGS



M Material: A6063S-T5 Bushing: Oil Embedded Polyacetal
S Surface Treatment: Electroless Nickel Plating



Features

- Excels in friction resistance and sliding characteristics with low dust generation compared with conventional hinges, as the sliding section resin is made from the special material (Oil Embedded Polyacetal).
- The aluminum part is electroless nickel plated instead of conventional anodizing, resulting in better conductivity for less dust collection.
- When mounting the hinges on panels, Hinge Nuts are recommended on P.811.

Part Number Type	No.	* Allowable Load		Mass g	L	W	K	P	J	S	N				Screw, Nut			Unit Price		Volume Discount Rate											
		kg	N								Through	Countersink	E	R	Screw	Quantity	Nut	Quantity	1-8 pc(s).		9-50										
HHPMGS	5	10	98	22	47	36	11	25	7.5	21	5.5	11	5	5	SHFBS5-8	4	HNNTSN5-5	4													
	6			33																	48	8.5	30	8	32	6.5	13	5.5	5.5	SHFBS6-10	HNNTSN6-6
	8			48																	63	62	13	37	10	42	SHFBS6-12	HNNTSN8-6			

* The allowable load is the value when 2 pieces are used.



Ordering Example

Part Number
HHPMGS6



Alterations



Part Number - (SET, SST)
HHPMGS6 - SST

Alterations	Code	Spec.	Hinge	No.
Set of applicable Screws and Nuts	SET SST (Stainless Steel)	Applicable screws and nuts come in a set. When SST is specified, screws and nuts will be in stainless steel. * -SET is available for Stop Hinges only. (When -SET is specified, the material of the Flat Head Screws is SCM435 and their surface treatment is Black Oxide.)	HHPSNH	5
			HHPMGS	6
				8