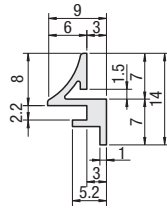


Post-Assembly Panel Holders, Clamps for Panel Holders



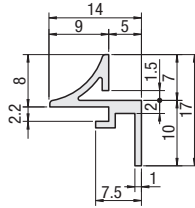
For HFS5 Series

HSDA5



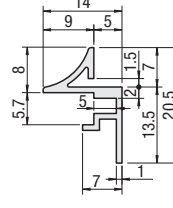
For HFS6 Series

HSDA6



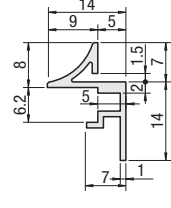
For HFS8 Series

HSDA8



For HFS8-45 Series

HSDA8-45



RoHS10

Use in combination with the Clamps for Post-Assembly Panel Holders.

Material: A6N01SS-T5

Surface Treatment: Anodize

Part Number		Length 1mm Increment	Extrusion (Series)	Applicable Panel Thickness	Unit Price Less than 300mm	Unit Price/m 300mm or more
Type	No.					
HSDA	5	100 3000	HFS5	3	1 ~ 50 pc(s).	1 ~ 50 pc(s).
	6		HFS6			
	8		HFS8			
	8-45		HFS8-45*			

* Select No. 8 for 45 Square Light type (HFSL8-45) series.

For orders larger than indicated quantity, please check with WOS.



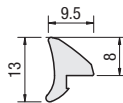
Alterations Part Number - Length - (CTW45)
HSDA5 - 800 - CTW45

Alteration	Code	Spec.
Cuts the upper side of panel holder slot by 45 degrees.	CTW45	Cuts the upper side of panel holder slot by 45 degrees. To connect extrusions, use the tapping joint.
		Mounting Example



For HFS5, HFS6 Series

HSDP5-6
HSDPF5-6

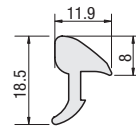


Use in combination with the Post-Assembly Panel Holders.

The Clamps for Post-Assembly Panel Holders can be cut with a utility knife.

For HFS8, HFS8-45 Series

HSDP8-845
HSDPF8-845



Type	Color	Material	Heat Resistance Temperature
HSDP HSDPF	Light Gray	EPDM	-40 ~ 120°C

Clamps for Panel Holders - Standard

Part Number		Length (m)	Extrusion (Series)	Unit Price	Volume Discount Rate
Type	No.				
HSDP	5-6	12	HFS5	1 ~ 8 pc(s).	9~50
	8-845		HFS6 HFS8 HFS8-45		



Ordering Example Part Number - Length
HSDA5 - 800
HSDP5-6 - 12

Clamps for Panel Holders - Configurable

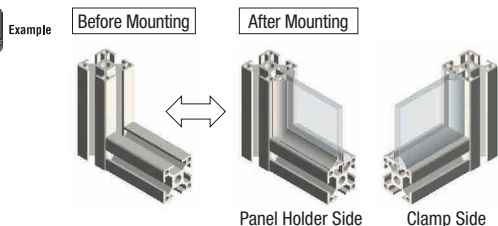
For orders larger than indicated quantity, please check with WOS.

Part Number		Length 1mm Increment	Extrusion (Series)	Unit Price/m
Type	No.			
HSDPF	5-6	100~3000	HFS5	1 ~ 50 pc(s).
	8-845		HFS6 HFS8 HFS8-45	

Dimensions by Joints

For orders larger than indicated quantity, please check with WOS.

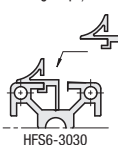
Joints Used	Single Joint Kit	Tapping Joints Screw Joint Kit Simple Joint								
Post-Assembly Panel Holders	<p>• Post-Assembly Panel Holder Dimensions ①=H-1 ②=W-17 When the alteration of 45° cut in the upper part is applied ①=H-1 ②=W-1 • Mounting Panel Dimension Height=H-3, Width=W-3</p>									
Clamps for Panel Holders	<p>Upper Side 45° Cut Notching at ℓ dimension of the slot (Can be cut with a utility knife.)</p> <table border="1"> <thead> <tr> <th>Joints Used</th> <th>ℓ</th> </tr> </thead> <tbody> <tr> <td>HSJ6</td> <td>4</td> </tr> <tr> <td>HSJ8</td> <td>4.5</td> </tr> <tr> <td>HSJ8-45</td> <td>4</td> </tr> </tbody> </table> <p>For Narrow Type, notching the slot is not necessary.</p> <p>Upper Side 45° Cut (Can be cut with a utility knife.)</p>	Joints Used	ℓ	HSJ6	4	HSJ8	4.5	HSJ8-45	4	
Joints Used	ℓ									
HSJ6	4									
HSJ8	4.5									
HSJ8-45	4									



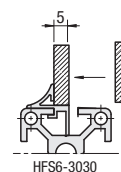
- Panel can be installed after extrusion is assembled.
- Panel replacement is easy without disassembling the extrusion.

Clamps for Panel Holders can be cut with a utility knife.

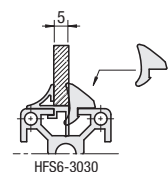
(Mounting Steps)



① Insert a panel holder into the slot of the extrusion.



② Insert a panel onto the panel holder.



③ Insert a clamp for panel holder into the gap.