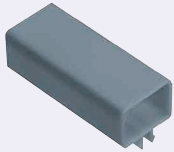


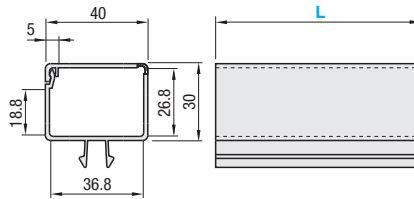
# Cable Covers

## Cable Covers



RoHS10

HSCE (Standard Length)  
HSCEF (Configurable Length)



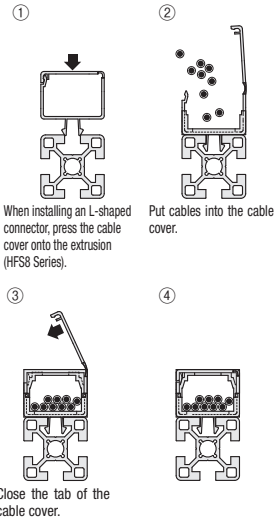
Material: Polypropylene Resin



Example

## How to Use a Cable Cover

Cables can be easily housed.



When installing an L-shaped connector, press the cable cover onto the extrusion (HFS8 Series).

Put cables into the cable cover.

Close the tab of the cable cover.

## Cable Covers Standard Length

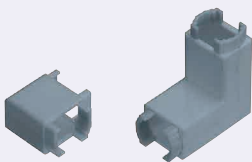
Part Number		Color	L m	Applicable Extrusion (Series)	Unit Price 1 ~ 5 pc(s).	Volume Discount Rate 6~20
Type	No.					
HSCE	8	S (Light Gray)	2	HFS8		

## Cable Covers Configurable Length

Part Number		Color	L 1mm Increment	Applicable Extrusion (Series)	Unit Price/m 1 ~ 20 pc(s).
Type	No.				
HSCEF	8	S (Light Gray)	100~2000	HFS8	

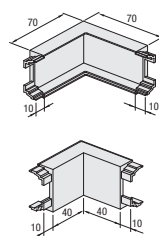
Unit Price/m x Specified Full Length = Price

## Cable Cover L-Shaped Connectors

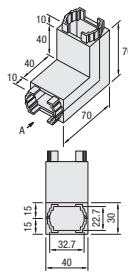


RoHS10

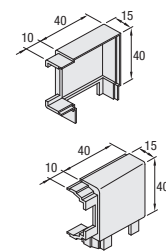
HSCELA (Vertical L-shaped)



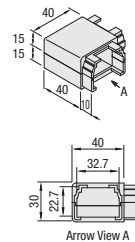
When these parts are set up



HSCELB (Flat L-shaped)



When these parts are set up

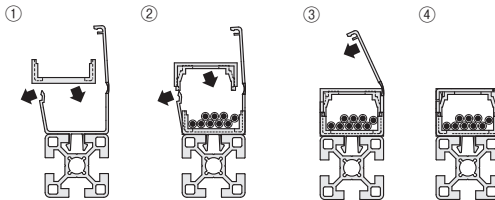


Material: ABS Resin

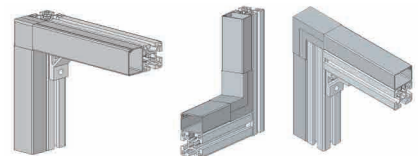
Part Number		Color	Unit Price 1 ~ 5 pc(s).	Volume Discount Rate 6~20
Type	No.			
HSCELA HSCELB	8	S (Light Gray)		



Example



Open cable cover and insert the L connector. Open cable cover and embed the L connector. Close the tab of the cable cover.



Encase a cable duct along an aluminum extrusion with 2 pcs. of L-shaped connectors.



Ordering Example

Part Number	-	Color	-	L
HSCE8	-	S	-	2
HSCEF8	-	S	-	