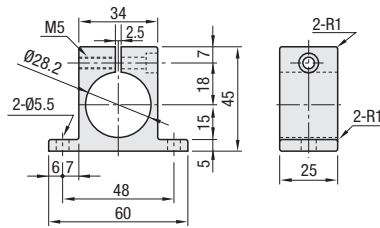


Clamps/Stands for Factory Frames

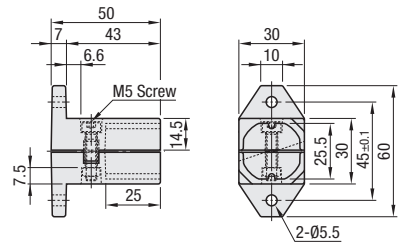


RoHS 10

FFS105



FFS205



Part Number	Component	Material	Surface Treatment
FFS105	Caster	A6063	Clear Anodize
	Screw	SCM435	Trivalent Chromate
FFS205	Caster	ADC12 Equivalent	-
	Screw	SCM435	Trivalent Chromate
	Nut	SS400	Trivalent Chromate

Part Number	Applicable Extrusion	Included Screw, Nut			Unit Price	Volume Discount Rate
		Screw	Quantity	Nut		
FFS105	FFA28 FFAS28 (P.880) FFAU28	M5-22	1	-	1 ~ 19 pc(s).	20-50
FFS205		M5-20	1	M5 (JIS Class 1)		



Ordering Example
Part Number
FFS105

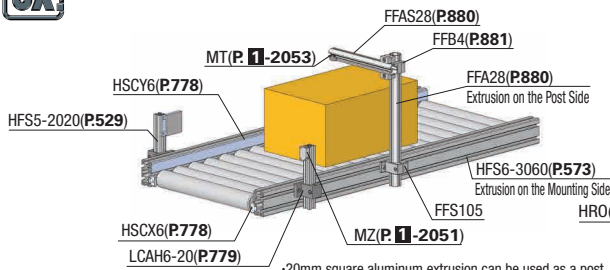
Applicable Screw and Nut (Mounting Side)

🔗 Screws and nuts for the mounting side are not included.

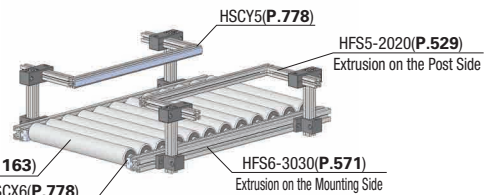
No.	Extrusion on the Mounting Side	Screw, Nut		
		Screw	Nut	Quantity
FFS105	HFS5	CBM5-10	HNTT5-5	2
	HFS6	CBM5-12	HNTT6-5	
	HFS8	CBM5-15	HNTT8-5	
	HFS8-45	CBM5-12	HNTT5-5	
FFS205	HFS5	CBM5-12	HNTT5-5	2
	HFS6	CBM5-15	HNTT6-5	
	HFS8-45	CBM5-18	HNTT8-5	



Example



*20mm square aluminum extrusion can be used as a post and can adjust the position of beam sensors.



* Adjusting the position of plastic covers is possible depending on the size of a workpiece to be conveyed.

