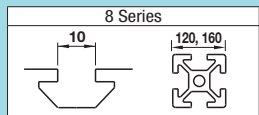


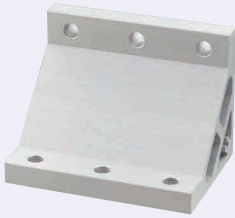
Extruded Brackets - For 3 or More Slots

For 8 Series (Slot Width 10mm) Aluminum Extrusions

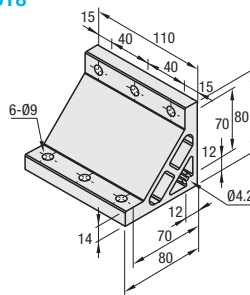


■ **Features:** Brackets to connect Extrusions with 3 slots (HFS8-40120 etc.) with one bracket.

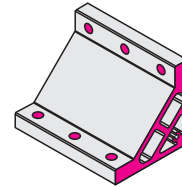
Ultra Thick Brackets



NBLUT8
HBLUT8



Type	Material	Surface Treatment
NBLUT8	A6063S-T5	
HBLUT8	AGN01SS-T5	Anodize

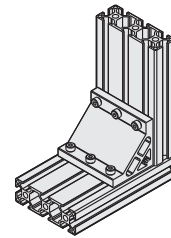


⚠ Both sides and screw holes of NBLUT8 is not anodized.

Part Number	Mass (g)	Applicable Screw, T Nut				Allowable Load (N)	Unit Price (1-99 pc(s))	Volume Discount Rate (100-200)
		Screw	Quantity	T Nut	Quantity			
NBLUT8	564	CBM8-25	6	HNTT8-8	6	5292		
HBLUT8								

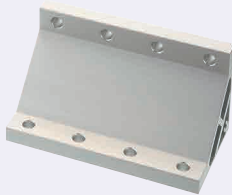


Example

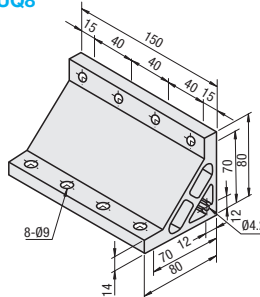


■ **Features:** Brackets to connect Extrusions with 4 slots (HFS8-40160 etc.) with one bracket.

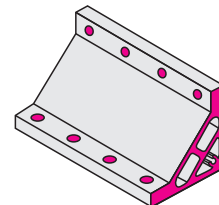
Brackets for Heavy Load



NBLUQ8
HBLUQ8



Type	Material	Surface Treatment
NBLUQ8	A6063S-T5	
HBLUQ8	A6N01SS-T5	Anodize

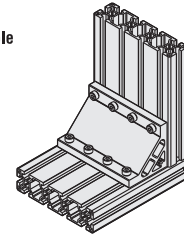


⚠ Both sides and screw holes of NBLUQ8 is not anodized.

Part Number	Mass (g)	Applicable Screw, T Nut				Allowable Load (N)	Unit Price (1-99 pc(s))	Volume Discount Rate (100-200)
		Screw	Quantity	T Nut	Quantity			
NBLUQ8	770	CBM8-25	8	HNTT8-8	8	7056		
HBLUQ8								



Example



Ordering Example

Part Number

HBLUT8



Alterations



Part Number

HBLUT8

(C, SET, SST, SEU, SSU, SEP, SSP, SEC)

SET

Alterations	Code	Spec.	Applicable Bracket
Mounting Hole Alteration for Cover	C	Adds taps on a bracket for cover mounting. (M5 on Both Sides) (Mounting Screw HCBM on P.754)	NBLUT8
			HBLUT8
			NBLUQ8
			HBLUQ8



Alterations	Code	Spec.	Applicable Bracket
Applicable Screws and Nuts Set	SET SST (Stainless Steel)	Applicable screws and nuts for fixing the brackets on extrusions come in a set. (Adds to the bracket price.) (Ex.) When HBLUT8 is specified: Code Screw Nut SET CBM8-25 HNTT8-8 SST SCB8-25 HNTTSN8-8 SEU CBM8-25 HNTU8-8 SSU SCB8-25 SHNTU8-8 SEP CBM8-25 HNTP8-8 SSP SCB8-25 SHNTP8-8 SEC HCBST8-29 HNTT8-8 ⚠ When specifying other than HBLUT8, check for the applicable screws and nuts.	NBLUT8
	SEU (Pre-Assembly Insertion) Spring Nuts		HBLUT8
	SSU (Pre-Assembly Insertion Spring Nut) Stainless Steel		NBLUQ8
	SEP (Post-Assembly Insertion) Spring Nuts		HBLUQ8
	SSP (Post-Assembly Insertion Spring Nut) Stainless Steel		HBLUQ8
	SEC (Screws with Captured Washer and Nuts)		HBLUQ8

⚠ Included Screw is not RoHS compliant when -SET, -SEU or -SEP are specified.