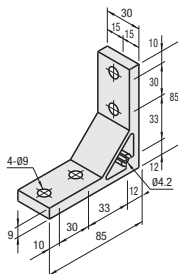


■ **Features:** Extruded Brackets with two mounting holes on one side can connect extrusions more securely.

■ **Thick Brackets**



HBLTSW8



■ Material: A6N01SS-T5
 ■ Surface Treatment: Anodize

Part Number	Mass (g)	Applicable Screw		T Nut		Allowable Load (N)	Unit Price (1-99 pc(s))	Volume Discount Rate (100-200)
		Screw	Quantity	T Nut	Quantity			
HBLTSW8	113	CBM8-20	4	HNTT8-8	4	3087		

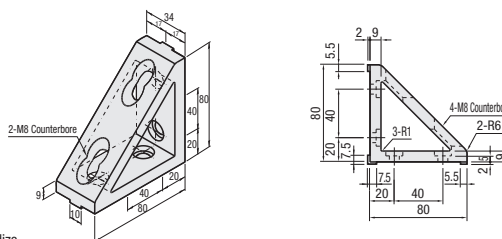
■ **Features:** Brackets with two mounting holes on one side can connect extrusions more securely.

■ **Triangle Brackets**



HBLDSWT8

(With Tab)

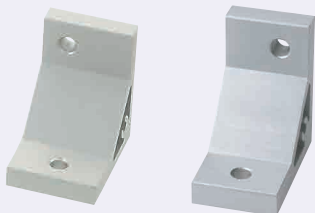


■ Material: A6N01SS-T5
 ■ Surface Treatment: Anodize

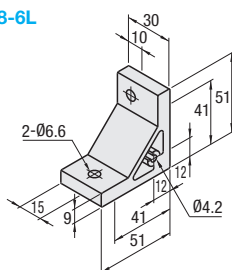
Part Number	Mass (g)	Applicable Screw		T Nut		Allowable Load (N)	Unit Price (1-99 pc(s))	Volume Discount Rate (100-200)
		Screw	Quantity	T Nut	Quantity			
HBLDSWT8	195	CBM8-15	4	HNTT8-8	4	3087		

■ **Features:** Brackets to connect 40, 30 square Extrusions.

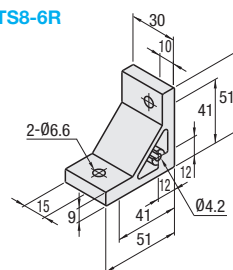
■ **Assembly Brackets for Different Extrusion Sizes**



HBLTS8-6L

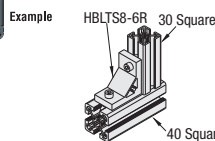


HBLTS8-6R



■ Material: A6N01SS-T5
 ■ Surface Treatment: Anodize

Part Number	Mass (g)	Applicable Screw		T Nut		Unit Price (1-99 pc(s))	Volume Discount Rate (100-200)
		Screw	Quantity	T Nut	Quantity		
HBLTS8-6L	66	CBM6-20	1	HNTT8-6	1		
CBM6-15		HNTT6-6					
CBM6-20		HNTT8-6					
CBM6-15		HNTT6-6					
HBLTS8-6R							



Ordering Example
 Part Number: HBLTSW8

Alterations
 Part Number: HBLTSW8
 (C, SET, SST, SEU, SSU, SEP, SSP, SEC)
 SET

Alterations	Code	Spec.	Applicable Bracket
Mounting Hole Alteration for Cover	C	Adds taps on a bracket for cover mounting. (M5 on Both Sides) (Mounting Screw HCBM on P.754) *Tapping Direction: Tapping is applied on only one side which is narrowed by offset.	HBLTF8
		HBLUS8	
		HBKUS8	
		HBLTSW8	
		HBLTS8-6L*	
		Tapped Hole Position	HBLTS8-6R*

Alterations	Code	Spec.	Applicable Bracket
Applicable Screws and Nuts Set	SET SST (Stainless Steel) SEU (Pre-Assembly Insertion) Spring Nuts SSU (Pre-Assembly Insertion) Spring Nuts Stainless Steel SEP (Post-Assembly Insertion) Spring Nuts SSP (Post-Assembly Insertion) Spring Nuts Stainless Steel SEC (Screws with Captured Washer and Nuts)	Applicable screws and nuts for fixing the brackets on extrusions come in a set. (Adds to the bracket price.) (Ex.) When HBLTSW8 is specified: Code Screw Nut SET CBM8-20 HNTT8-8 SST SCB8-20 HNTTS8-8 SEU CBM8-20 HNTU8-8 SSU SCB8-20 SHNTU8-8 SEP CBM8-20 HNTP8-8 SSP SCB8-20 SHNTP8-8 SEC HCBST8-24 HNTT8-8 *When specifying other than HBLTSW8, check for the applicable screws and nuts.	HBLTF8 HBLUS8 HBLUS8R HBKUS8 HBKUS8R HBLTSW8 HBLDSWT8 HBLTS8-6L HBLTS8-6R

⚠ Screws for black anodized brackets are HCBMTB (Trivalent Chromate Black) on P.751.
 ⚠ Included Screw is not RoHS compliant when -SET, -SEU or -SEP other than black anodized brackets is specified.