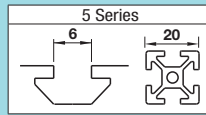


# 5 Series Aluminum Extrusions

## Bent Extrusions / Brackets for Reinforcement



Fixing Parts			Others
Brackets	Joints	Nut	Extrusion End Cap
P.535 ~ P.550	P.551 ~ P.554	P.557 ~ P.566	P.755 ~ P.768
		P.567	

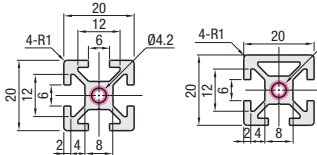
■ Features: Bending is applied to HFS5-2020. Combination use with Bent Panel (P.968) is possible.

### Bent Extrusions



### HFSMG5

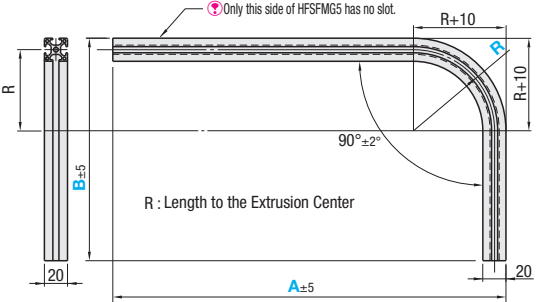
### HFSFMG5



⚡ Bending is applied after anodizing; therefore, bent section may slightly discolor and becomes white.

(For dedicated Bent Panels, refer to P.968)

Ⓜ Material : A6N01SS-T5  
 Ⓢ Surface Treatment: Clear Anodize



⚡ When R=140, the frame slot may be deformed and becomes narrower in width at the spot where the frame is bent. Therefore, slot nut cannot be used.

⚡ A and B dimensions not indicated in the price list are not available.



Alterations Part Number - A - B - R - (LTP, RTP, TPW...etc.)  
 HFSMG5-2020 - A400 - B500 - R140 - LTP-LMH

Part Number		A	B	R*
Type	No.	1mm Increment	1mm Increment	
HFSMG	5-2020	200~1500	200~1000	140 300 500

Type	Series	Mass kg/m	Sectional Area mm <sup>2</sup>	Cross Sectional Moment of Inertia mm <sup>4</sup>
HFSMG	HFS5	0.50	183	0.742x10 <sup>4</sup>
HFSFMG				0.742x10 <sup>4</sup>

\* Bent panels for R300 and R500 are not available.

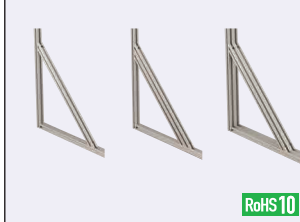
Ordering Example Part Number - A - B - R  
 HFSMG5-2020 - A350 - B700 - R140

Alterations Code	Tapping (See P.757)			M Type Hole (See P.766)		
	LTP	RTP	TPW	LMH	LMV	RMH
Spec.	Tapping to the center hole. Tap Shape M5 Depth 15 LTP : Tapping on the Left End Face RTP : Tapping on the Bottom End Face TPW : Tapping on both ends. Ex. LTP			Adds M type hole in specified position. Can be connected with Center Joint (P.553) or Post-Assembly Insertion Double Joints (P.554). LMH, RMH: Adds an M hole on the left (bottom) of the extrusion in the horizontal direction. Ex. LMH LMV, RMV: Adds a hole on the left (bottom) of the extrusion in the vertical (right) direction. Ex. RMV ⚡ LMV and RMV are not applicable to HFSFMG.		
Applicable Extrusion	HFSMG5-2020 HFSFMG5-2020			120		
	270	540				

Part Number	A	Unit Price																
		R140						R300			R500							
		B						B			B							
Type	No.	200-300	301-400	401-500	501-600	601-700	701-800	801-900	901-1000	400-500	501-600	601-700	701-800	801-900	901-1000	600-700	701-800	801-900
HFSMG HFSFMG	5-2020	200~300	-	-	-	-	-	-	-	-	-	-	-	-	-	-	-	-
		301~400	-	-	-	-	-	-	-	-	-	-	-	-	-	-	-	-
		401~500	-	-	-	-	-	-	-	-	-	-	-	-	-	-	-	-
		501~600	-	-	-	-	-	-	-	-	-	-	-	-	-	-	-	-
		601~700	-	-	-	-	-	-	-	-	-	-	-	-	-	-	-	-
		701~800	-	-	-	-	-	-	-	-	-	-	-	-	-	-	-	-
		801~900	-	-	-	-	-	-	-	-	-	-	-	-	-	-	-	-
		901~1000	-	-	-	-	-	-	-	-	-	-	-	-	-	-	-	-
		1001~1100	-	-	-	-	-	-	-	-	-	-	-	-	-	-	-	-
		1101~1200	-	-	-	-	-	-	-	-	-	-	-	-	-	-	-	-
		1201~1300	-	-	-	-	-	-	-	-	-	-	-	-	-	-	-	-
		1301~1400	-	-	-	-	-	-	-	-	-	-	-	-	-	-	-	-
1401~1500	-	-	-	-	-	-	-	-	-	-	-	-	-	-	-	-		

■ Features: Reinforcement Brackets machined from extrusions. Usable on locations needing more strength after connecting with brackets.

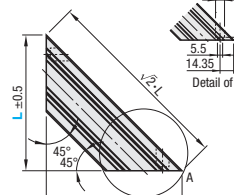
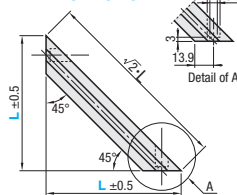
### Brackets for Reinforcement



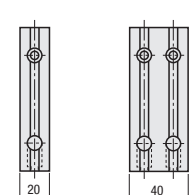
(No surface treatment on 45 deg. cut ends and counterbores.)

### HFBL5-2020 HFBL5-2040

### HFBL5-4020



<Front View>  
HFBL5-2020  
HFBL5-4020



Ⓜ Material : A6N01SS-T5  
 Ⓢ Surface Treatment: Clear Anodize

Part Number	L 1mm Increment	Applicable Screw and Nut		L100~300			L301~500			
		Screw	Nut	Unit Price	Volume	Discount Rate	Unit Price	Volume	Discount Rate	
HFBL5	2020 2040 4020	100~500	CBM5-8	HNTT5-5	1~4 pc(s)	5~20	21~50	1~4 pc(s)	5~20	21~50
			2	2						
			4	4						
			2	2						

Alterations Part Number - L - (C, SET, SST, SEU, SSU, SEP, SSP, SEC)  
 HFBL5-2020 - 300 - SET

Alterations	Code	Spec.	Applicable Bracket
Applicable Screws and Nuts Set	SET SST SEU (Stainless Steel)	Applicable screws and nuts for fixing the brackets on extrusions come in a set. (Adds to the bracket price.)  (Ex.) When HFBL5 is specified	HFBL5-2020
	SSU (Pre-Assembly Insertion Spring Nuts)		HFBL5-2040
	SEP (Post-Assembly Insertion Spring Nuts)		HFBL5-4020
	SSP (Pre-Assembly Insertion Spring Nuts)		

⚡ Not RoHS compliant when -SET, -SEU or -SEP are specified.