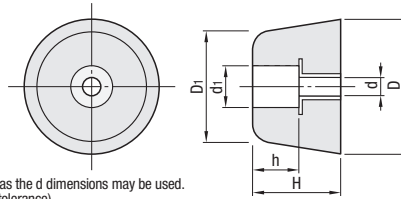


# Electroconductive Rubber Feet with Collar / Electroconductive Rubber Feet / Rubber Feet Receiver Cups

Collar inserted into the rubber feet saves effort for height adjustment when fixed.



**ECRKC**



**M** Material Main Body: Conductive NBR, Collar: SPCE-SD Equivalent  
**S** Surface Treatment: Trivalent Chromate

Threads with the same diameter as the d dimensions may be used. (The d dimensions have positive tolerance)

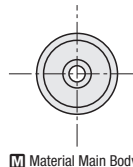
Part Number Type	No.	H	h	D	D <sub>1</sub>	d	d <sub>1</sub>	Allowable Load (N)	Pcs. per Pkg.	Unit Price	Volume Discount Rate	Volume Discount Rate
										1-2 pkg(s).	3-4 pkgs.	5 ~ 50 pkgs.
ECRKC	15	9	4	15	14	3	6	70	16			
	20	12	7	20	16	3	6	160	12			
	30	19	10	29	23	4	9	230	4			
	3225	25	13	32	27	5	14	335	4			
	3520	20	8	35	29	5	14	420	4			

Highly conductive rubber feet are excellent for static electricity prone desktop equipment.

For orders larger than indicated quantity, please check with WOS.



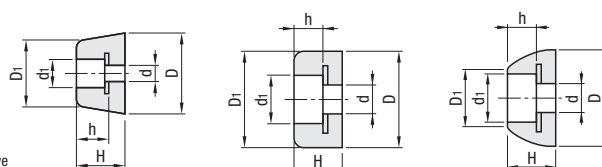
**ECRK**



**M** Material Main Body: Conductive NBR, Washer: SUS304

Below is the shape for No.10.

Below is the shape for No.3617.



Threads with the same diameter as the d dimensions may be used. (The d dimensions have positive tolerance)

Part Number Type	No.	H	h	D	D <sub>1</sub>	d	d <sub>1</sub>	Allowable Load (N)	Pcs. per Pkg.	Unit Price	Volume Discount Rate	Volume Discount Rate
										1-2 pkg(s).	3-4 pkgs.	5 ~ 50 pkgs.
ECRK	10	5	3	10	10	3	5	98	24			
	15	8	5	15	14	3	6	147	16			
	16	10	5	16	14	3	6	147	12			
	18	11	7	18	15	4	7	147	12			
	20	12	7	20	16	4	7	196	12			
	24	10	5	24	19	4	9	196	4			
	26	15	10	26	20	4	10	294	4			
	30	19	10	30	24	4	14	294	4			
	3225	25	9	32	28	5	14	490	4			
	3617	17	9	36	20	6	17	147	4			

For orders larger than indicated quantity, please check with WOS.

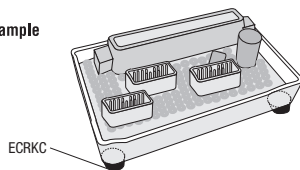


Ordering Example

Part Number  
ECRKC3225  
ECRKC15



Example



ECRKC

### Features

- Highly conductive rubber feet made of rubber with a Specific Volume Conductivity of 100<sup>Ω</sup>·cm.
- Excellent for static sensitive applications such as desktop assembly of electronic components and PC boards.

### Characteristic Value

Item	Unit	Value
Specific Gravity	-	1.35
Hardness	Shore A	65
Elongation	%	500
Tensile Strength	MPa	8.1
Specific Volume Resistivity	Ω · cm	100

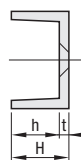
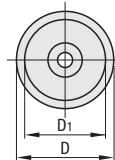
Measuring Method: JIS K 6301

The above values are not guaranteed values but an example of measured values.

Use these rubber cups to fix rubber feet locations.



**GOMAA**



**M** Material: Glass Containing ABS Resin

Part Number Type	No.	D	D <sub>1</sub>	H	h	t	Applicable Flathead Screw	Allowable Load (N)	Applicable Rubber Foot No.	Unit Price
GOMAA	10	14	10	6.5	4	2.5	M3	98	10	
	15	21	15	9.3	6.8			196	15	
	18	23.5	17.5	12.3	9.3	3	M4	245	18	
	24	29.5	23.5	12.5	9			294	24	
	30	35.5	29.5	21	17.5	3.5	M5	392	30	



Ordering Example

Part Number  
GOMAA10



Alterations

Part Number - (SET)  
GOMAA10 - SET

Use when the cups cannot be screw mounted.

Alteration	Anti-Slip Pad	Code	Spec.
	Adds glued-on pads on the bottom of Receiver Cups for anti-slip purpose.	SET	 *Screw holes will be blinded.
	<b>M</b> Material Polymer Foam of Acrylic and Urethane Rubber		