

Note that, for some of the types shown here, order might be unable to be received by the MISUMI Malaysia, Indonesia and/or India offices.

Sponge Tapes / Rubber Bumpers

■ Sponge Tapes of 500mm, 1000mm, 1500mm and 2000mm long.

Type	Material	Hardness	Color
SGNPTA	EPDM Sponge	Asker C8	Black
SGNATA	Silicon Rubber Sponge	Asker C35	Orange
EPATA	EPDM Foam (EPT Sealer®)	(Less than Asker C1)	Black

• A Dimension Tolerance		• L Dimension Tolerance	
SGNPTA	±1.5	SGNPTA	500 1000
SGNATA	±1.5	SGNATA	±3 ±5
EPATA	±2.5	EPATA	500, 1000 1500, 2000
			+14 +15
			- 6 - 8

Seal
Backing Paper
T
A
L

Characteristic Data P441

Part Number	T Selection	T Tolerance	Selection	
Type			A	L
SGNPTA SGNATA	3	±0.5	10	500
	5		15	
	10		20	
EPATA	3	±1.0	30	1000
	5		50	
	10		1500	
			2000	

Ordering Example Part Number - A - L
SGNPTA3 - 10 - 1000

Part Number		A	Unit Price					
Type	T		SGNPTA	SGNATA	EPATA			
			L500	L1000	L500	L1000	L1500	L2000
SGNPTA SGNATA EPATA	3	10						
		15						
		20						
	5	30						
		50						
		10						
		15						
	10	20						
		30						
		50						
		1500						
		2000						

■ Features of EPATA

This product is of semi-closed cell foam and can be compressed with little resistance. The foam becomes of closed cell after being compressed. It is a highly functional sealant for gap filling and insulating from heat, water and sounds.

■ Characteristic Value

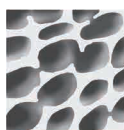
Test method conforms to JIS K 6767.

Measurement Item	Unit	EPATA
Specific Gravity	-	0.095
Tensile Strength	kg/cm ²	0.90
Elongation	%	430
Compressed Hardness	25%	0.02
	50%	0.05
Foam Type	-	Semi-Closed Cell

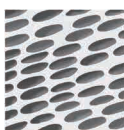
Compression Ratio (%)	EPATA
50	×
60	△
70	○
80	○

○: No leak after 30 min.
△: Leakage within 30 min.
×: Leakage within 10 min.

• Semi-Closed Cell Foam Type (EPATA)



Before Compression



After Compression

■ Features of Closed Cell Type (SGNPTA/SGNATA):

Air and water do not permeate the material since it is of closed cell structure. Shock absorbing performance is also good.

Impervious to air and water



■ Shock absorbing rubber bumpers/feet on sheets.

■ Rubber Bumpers

RoHS 10

BMPM (Round)

Adhesive Surface

BMPK (Square)

Adhesive Surface

12 pcs. per package.
It may be divided into several sheets.

Material Main Body: Polyurethane, Adhesives: Acrylic Type Hardness: Shore A70

Part Number	D	T	Unit Price
Type	No.		
BMPM	5312	12.7	3.6
	1005	19	5
BMPK	5008	12.7	3
	1037	15	5

Ordering Example Part Number
BMPM5312
BMPK1037

12 pcs. per package.