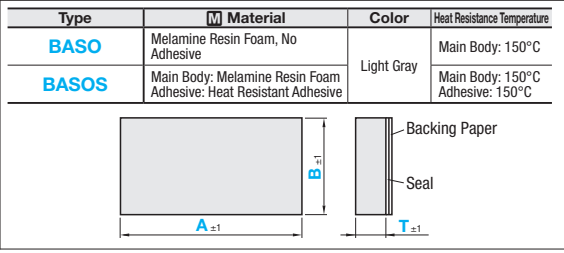


Heat and Sound Insulation Sponges / Heat Insulation Sponges

Melamine Resin Foam

High Heat Resistant Polyimide Foam

Heat and Sound Insulation Sponges whose heat resistance is up to 150°C and Heat Insulation Sponges whose allowable temperature limit is 200°C are added.



Part Number	1mm Increment		
	Type	T	A B
BASO (No Adhesive)	5	50~1000	50~1000
	10		
	20		
BASOS (Adhesive)	5		
	10		
	20		

Characteristic Data

Item	Unit	Characteristic Value
Apparent Density	kg/m ³	9.5
Thermal Conductivity	W/m·K	0.034
Combustibility	-	HF-1

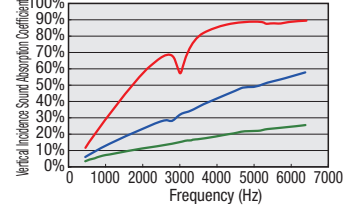
Mechanical Characteristics

Item	Unit	Characteristic Value
Tensile Strength	kPa	148
Elongation	%	18
Compressive Stress 25%	kPa	4.3

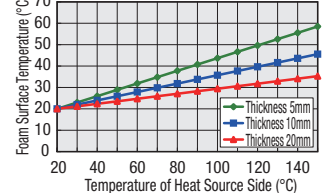
Ordering Example: Part Number - A - B
BASO10 - 200 - 100

Part Number	Type	T	A (A≥B)	Unit Price			
				B			
BASO (No Adhesive)	5	10	20	50~300	-	-	-
				301~500	-	-	-
				501~800	-	-	-
				801~1000	-	-	-
				50~300	-	-	-
				301~500	-	-	-
	10	20	50~300	-	-	-	-
				301~500	-	-	-
				501~800	-	-	-
				801~1000	-	-	-
				50~300	-	-	-
				301~500	-	-	-
BASOS (Adhesive)	5	10	20	50~300	-	-	-
				301~500	-	-	-
				501~800	-	-	-
				801~1000	-	-	-
				50~300	-	-	-
				301~500	-	-	-
	10	20	50~300	-	-	-	-
				301~500	-	-	-
				501~800	-	-	-
				801~1000	-	-	-
				50~300	-	-	-
				301~500	-	-	-

Sound Insulation Property of BASO (Normal Incident Sound Absorption Coefficient)

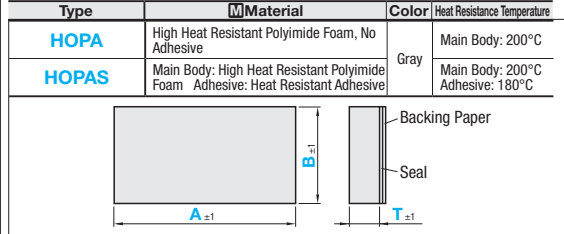
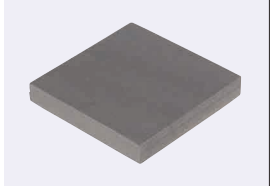


BASO Surface Temperature at 20°C Room Temperature



Heat Insulation Sponges

High Heat Resistant Polyimide Foam



Part Number	1mm Increment		
	Type	T	A B
HOPA (No Adhesive)	7	50~900	50~900
	14		
	7		
HOPAS (Adhesive)	7		
	14		

Characteristic Data

Item	Unit	Characteristic Value
Apparent Density	kg/m ³	52
Thermal Conductivity	W/m·K	0.036

Mechanical Characteristics

Item	Unit	Characteristic Value
Tensile Strength	kPa	1300
Elongation	%	70
Compressive Stress 25%	kPa	190

Ordering Example: Part Number - A - B
HOPA7 - 200 - 100

Part Number	Type	T	A (A≥B)	Unit Price			
				B			
HOPA (No Adhesive)	7	14	20	50~300	-	-	-
				301~500	-	-	-
				501~800	-	-	-
				801~900	-	-	-
				50~300	-	-	-
				301~500	-	-	-
	14	20	50~300	-	-	-	-
				301~500	-	-	-
				501~800	-	-	-
				801~900	-	-	-
				50~300	-	-	-
				301~500	-	-	-
HOPAS (Adhesive)	7	14	20	50~300	-	-	-
				301~500	-	-	-
				501~800	-	-	-
				801~900	-	-	-
				50~300	-	-	-
				301~500	-	-	-
	14	20	50~300	-	-	-	-
				301~500	-	-	-
				501~800	-	-	-
				801~900	-	-	-
				50~300	-	-	-
				301~500	-	-	-

HOPA Surface Temperature at 20°C Room Temperature

