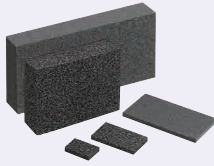


EPT Sealer[®] Sponge, Opsealer[®] Sponge

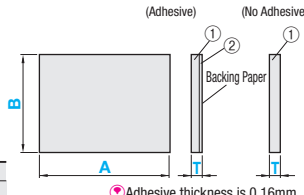
■ Semi-closed cell foam can be compressed at small rebound stress, and changes its structure to closed cell after the compression. Therefore, water cannot pass through the material.



EPA (Adhesive)
EPAOP (Adhesive)
EPAN (No Adhesive)

Ⓜ A≥B

Type	Material	
	①	②
EPA	EPDM Foam (EPT Sealer [®])	Adhesive with Unwoven Cloth Base Material
EPAOP	EPDM Foam (Opsealer [®])	Adhesive with Net Base Material



Ⓜ Adhesive thickness is 0.16mm.

■ Accuracy Standards

T Dimension Tolerance		A, B Dimension Tolerance	
T	Tolerance	A, B	Tolerance
3-10	±1.0	20	±2.0
15-25	±2.0	30-50	±2.5
30	±2.5	60-140	±3.5
		150-290	±6.5
		300-500	±9.0

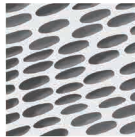
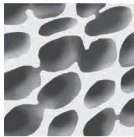
Ⓜ EPT Sealer[®] is a registered trademark of Nitto Denko Corporation.
 Ⓜ Opsealer[®] is a registered trademark of Sanwa Kako Co., Ltd.

Part Number	10mm Increment		Selection T
	A	B	
EPA	20~500	20~400	3
EPAOP			5
EPAN			8
			10
			15
			20
	25		
	30		

Ordering Example

Part Number	A	B	T
EPA	100	80	8
EPAOP	200	100	30
EPAN	150	100	10

• Semi-closed Cell Structure



■ Characteristic Values Ⓜ The values are not guaranteed but measured ones.

Measurement Item	EPA	EPAOP
Color	Black	Black
Specific Gravity	0.11	0.08
Tensile Strength (Mpa)	0.08	0.1
Elongation (%)	450	205
Compression Hardness (25%) (kg/cm ²)	0.03	0.04
Compression Hardness (50%) (kg/cm ²)	0.05	0.05
Compression Rate (%)	50	△
	60	×
	70	△
	80	○
	90	○

- : No measurement data
- : No leakage of water after 30mins.
- △ : Leakage of water is seen within 30mins.
- × : Leakage of water is seen within 10mins.

Ⓜ The price of this product is the unit price shown in the table multiplied by material multiplier.

(Ex.) Part Number - A - B - T >> (Price in the Table) x (Material Multiplier) = Standard Type Unit
 EPAN -150 - 100 - 10

Part Number	T	A	Unit Price			
			B			
			20-100	110-200	210-300	310-400
EPA (x1.0)	3	20-100	-	-	-	-
		110-200	-	-	-	-
		210-300	-	-	-	-
		310-400	-	-	-	-
	5	20-100	-	-	-	-
		110-200	-	-	-	-
		210-300	-	-	-	-
		310-400	-	-	-	-
	8	20-100	-	-	-	-
		110-200	-	-	-	-
		210-300	-	-	-	-
		310-400	-	-	-	-
10	20-100	-	-	-	-	
	110-200	-	-	-	-	
	210-300	-	-	-	-	
	310-400	-	-	-	-	

Part Number	T	A	Unit Price			
			B			
			20-100	110-200	210-300	310-400
EPA (x1.0)	15	20-100	-	-	-	-
		110-200	-	-	-	-
		210-300	-	-	-	-
		310-400	-	-	-	-
	20	20-100	-	-	-	-
		110-200	-	-	-	-
		210-300	-	-	-	-
		310-400	-	-	-	-
	25	20-100	-	-	-	-
		110-200	-	-	-	-
		210-300	-	-	-	-
		310-400	-	-	-	-
30	20-100	-	-	-	-	
	110-200	-	-	-	-	
	210-300	-	-	-	-	
	310-400	-	-	-	-	

Part Number	T	A	Unit Price			
			B			
			20-100	110-200	210-300	310-400
EPAOP	3	20-100	-	-	-	-
		110-200	-	-	-	-
		210-300	-	-	-	-
		310-400	-	-	-	-
	5	20-100	-	-	-	-
		110-200	-	-	-	-
		210-300	-	-	-	-
		310-400	-	-	-	-
	8	20-100	-	-	-	-
		110-200	-	-	-	-
		210-300	-	-	-	-
		310-400	-	-	-	-
10	20-100	-	-	-	-	
	110-200	-	-	-	-	
	210-300	-	-	-	-	
	310-400	-	-	-	-	

Part Number	T	A	Unit Price			
			B			
			20-100	110-200	210-300	310-400
EPAOP	15	20-100	-	-	-	-
		110-200	-	-	-	-
		210-300	-	-	-	-
		310-400	-	-	-	-
	20	20-100	-	-	-	-
		110-200	-	-	-	-
		210-300	-	-	-	-
		310-400	-	-	-	-
	25	20-100	-	-	-	-
		110-200	-	-	-	-
		210-300	-	-	-	-
		310-400	-	-	-	-
30	20-100	-	-	-	-	
	110-200	-	-	-	-	
	210-300	-	-	-	-	
	310-400	-	-	-	-	