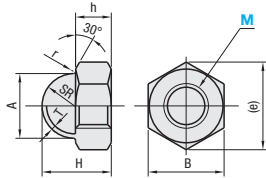


Nuts

Domed (Acorn) Nuts



Type	Material	Surface Treatment
FNT	SUS304 Equivalent	-



Hex nut section and the dome section are welded together.

JIS B 1183 (Type 3)

RoHS 10

Part Number	H	h	B	A[mm]	T[mm]	e (Approx.)	r (Approx.)	Unit Price	Volume Discount Rate
Type M (Coarse)								1 - 5 pcs	6 - 9 pcs
3	5.0	2.4	5.5	4.6	0.3	6.1	0.5		
4	6.2	3.2	7	5.6		8.1			
5	7.5	4	8	6.6	0.6	9.2			
6	9.5	5	10	8.5		11.5	0.5		
8	12.5	6.5	13	11.5	0.8	15			
10	15.5	8	17	14.5	1.0	19.6			
12	18.5	10	19	16.5	1.2	21.9			
16	24	13	24	21.5		27.7			
20	29	16	30	26.5	1.6	34.6			
24	35.5	19	36	32.5	2.0	41.6			

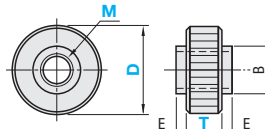


Ordering Example Part Number
FNT20

With Knurled Heads



Type	Material	Surface Treatment
FRNT	S45C	Black Oxide
FRNTS	SUS304	-



RoHS 10

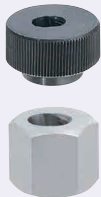
Part Number	D	T	E	B	FRNT Unit Price	FRNTS Unit Price
Type M (Coarse)					1 - 49 pcs	50 - 500 pcs
3	12	3	5	0.5	6	8
4	16	4	6	0.5	8	10
5	20	5	8	0.5	10	12
6	24	6	8	1	12	16
8	30	8	10	1	16	20
10	36	10	12	1	20	

For orders larger than indicated quantity, please check with WOS.



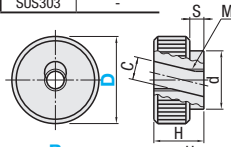
Ordering Example Part Number - D - T
FRNT8 - 30 - 10

Quick-Lock Nuts

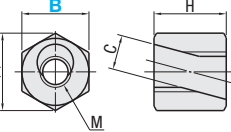


Type	Material	Surface Treatment
QCN	SUM22L	Black Oxide
QCNS	SUS303	-
QHN	S45C	Black Oxide
QHNS	SUS303	-

Round Type
QCN
QCNS



Hex Type
QHN
QHNS



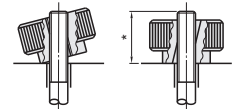
RoHS 10

Part Number	D	M (Coarse)	H	S	d	C	Reference Tightening Torque N(kgf)/m	Unit Price
Type								QCN QCNS
24	6	14	4	16	6.7	6.7	4.8(0.5)	
30	8	17	5	20	8.7	8.7	9.0(0.9)	
36	10	20	6	28	11.0	11.0	17.5(1.8)	
40	12	24	8	32	13.7	13.7	17.5(1.8)	

Part Number	B	M (Coarse)	H	C	(e)	Reference Tightening Torque N(kgf)/m	Unit Price
Type							QHN QHNS
17	6	14	6.7	19.6	19.6	4.9(0.5)	
19	8	17	8.7	21.9	21.9	9.8(1.0)	
24	10	20	11.0	27.7	27.7	15.6(1.6)	
27	12	24	13.7	31.2	31.2	19.6(2.0)	

Features and Precautions for Use

- Long threaded screws can be tightened quickly.
- Use at the reference tightening torque or less to avoid over tightening.
- Move the nut to the tightening position after inserting a screw into the straight hole. Then rotate the knob perpendicular to the screw and tighten it.
- Tightening strength is not adequate if the thread length of a screw (*) is shorter than the nut's H dimension. Design the thread length of a screw (*) to be larger than the H dimension.

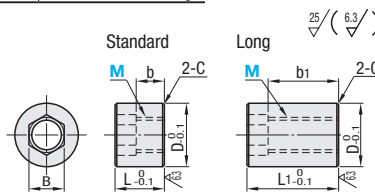


Ordering Example Part Number
QCN30
QHN19

Cylindrical Nuts with Hex Socket



Type	Material	Hardness	Surface Treatment
Standard			Black Oxide
Long	S45C	35-40HRC	Electroless Nickel Plating
RNSB	RNLB		
RNSM	RNLM		



*Since D dimensions are made to correspond to the head diameter of hex socket head cap screws, counterbore tools can be used for recess holes. (For one size larger diameters, for example M4 - M5.08.5)

RoHS 10

Part Number	D	L	L1	B	b	b1	C	Unit Price
Type								RNSB, RNSM
M (Coarse)								RNLB, RNLM
4	8.5	5	10	4	3	8	0.3	
5	10	7	13	5	4	10		
6	13	9	16	6	5	12		
8	16	12	22	8	6.5	16.5	0.5	
10	18	14	26	10	8	20		



Ordering Example Part Number
RNSB6