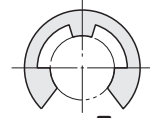
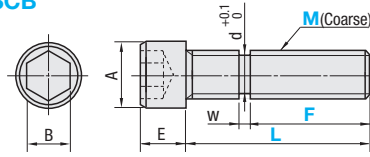


Hex Socket Head Cap Screws with Retaining Ring Groove / Stepped Screws

Low Head Selectable



ERSCB



M Material: SUS304 Equivalent
A Accessory:
 E Type Retaining Ring SUS304

Part Number Type	M (Coarse)	1mm Increment		L-F Machining Conditions	A	E	B	d	W	Applicable E Type Retaining Ring (Nominal Dia.) <small>(For details, see P265)</small>	Unit Price
		F	L								
ERSCB	3	2~12	10~20	L-F≥8	5.5	3	2.5	2	0.5	2	
	4	3~13	10~20	L-F≥7	7	4	3	3	0.7	3	
	5	3~18	10~25	L-F≥7	8.5	5	4	4	0.7	4	
	6	3~23	10~30	L-F≥7	10	6	5	4	0.7	4	
	8	4~29	10~35	L-F≥6	13	8	6	6	0.9	6	



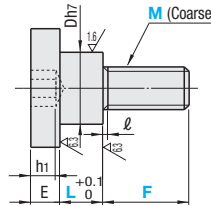
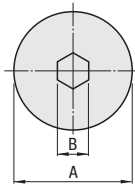
Ordering Example

Part Number - F - L
 ERSCB6 - 5 - 25

Stepped Screws



RoHS 10



Type	M Material	S Surface Treatment
DBB	S45C	Black Oxide
DBS	SUS303	-

Part Number Type	M (Coarse)	L	F	E	Dh7	A	B	l	h1	DBB			DBS		
										Unit Price	Volume	Discount Rate	Unit Price	Volume	Discount Rate
										1 - 4 pc(s)	5 - 19 pcs	20 - 49 pcs	50 - 100 pcs	1 - 4 pc(s)	5 - 19 pcs
DBB DBS	3	3	3 4 5 6	2	5	8	2	1	2						
		4	3 4 5 6												
		5	3 4 5 6												
		6	3 4 5 6												
		7	4 5 6												
	4	3	4 5 6 8	2.8	6	10	2.5	1.2	2.5						
		4	4 5 6 8												
		5	4 5 6 8												
		6	4 5 6 8												
		7	4 5 6 8												
5	3	5 8 10	3.5	8	12	3	1.4	3							
	4	5 8 10													
	5	5 8 10													
	6	5 8 10													
	7	5 8 10													
6	3	8 10 12	4	10	16	4	1.5	3.5							
	4	8 10 12													
	5	8 10 12													
	6	8 10 12													
	7	8 10 12													



Ordering Example

Part Number - L - F
 DBS6 - 3 - 10