

Locating Pins - Large Flat Head

Press Fit

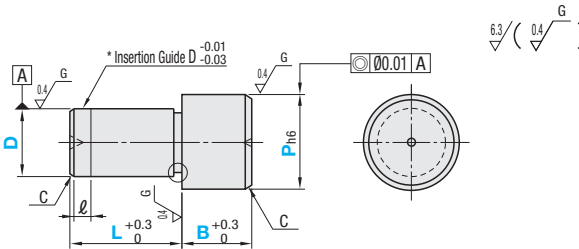
■ **Features:** Flat Head Type. Suitable if the mating side has limited space.



(Alteration CN)

Material No.	Material	Surface Treatment	Hardness	P Selectable		P, L, B Configurable	
				Type	D Tol.	Type	D Tol.
(1)	SKS3 Equivalent	-	Treated Hardness: 60~63HRC	JP	DA (m6)	FP	DC (m6)
(2)	SKS3 Equivalent	Hard Chrome Plating	Treated Hardness: 50~55HRC Plating Hardness: 750HV ~	GJP		GFP	
(3)	SKS3 Equivalent	-	-	BJP		BFP	
(4)	SUS304*	-	-	SJP	DPA (p6)	SFP	DPC (p6)
(5)	SUS304	Hard Chrome Plating	Plating Hardness: 750HV ~	HJP		HFP	
(6)	SUS440C or 13Cr stainless	-	Treated Hardness: 50~55HRC	CJP		CFP	

* For P Selectable Type, it is SUS304 equivalent.



■ P dim. Tolerance Table

P	h6
1.50~3.00	0 -0.006
3.01~6.00	0 -0.008
6.01~10.00	0 -0.009
10.01~18.00	0 -0.011
18.01~30.00	0 -0.013

* The insertion guide is applicable to tolerance p6 only.

⊕ SUS440C or 13Cr stainless has an identification groove at any position on D part.
⊕ Polished, centering hole is sometimes not available for SUS304.

When D<3 a=0.5
When D≥3 a=1.0
d=D-0.1 d=D-0.2
⊕ Relief dimension is a reference value.

■ P Selectable

Part Number		D	D dim. Tolerance		P Selection	L	B	l	C
Type	D Tol.		m6	p6					
JP GJP BJP SJP HJP CJP	DA (m6)	1			2	3	2	0	0.1
		2	+0.008	+0.012	3	4			0.5
		3	+0.002	+0.006	5	5	3	1	1
		4			6, 8				
		5	+0.012	+0.020	8, 10	10	5	2	1.5
		6	+0.004	+0.012	12	12	6		
	8	+0.015	+0.024	12, 14	16	10			
	10	+0.006	+0.015	16	20	20			
	12	+0.018	+0.029	18	22	22			
	13	+0.007	+0.018	25	24	25			
	16			30	32	30			
	20	+0.021 +0.008	+0.035 +0.022						

■ P, L, B Configurable

Part Number		D	D dim. Tolerance		P 0.01mm Increment	L 1mm Increment	B 0.1mm Increment	l	C
Type	D Tol.		m6	p6					
FP GFP BFP SFP HFP CFP	DC (m6)	1			1.50~3.00	2, 3	2.0~5.0	0	0.1
		2	+0.008	+0.012	2.50~6.00	2~6	2.0~15.0		0.5
		3	+0.002	+0.006	3.50~8.00	3~10	2.0~15.0	1	1
		4			4.50~8.00	3~14	2.0~15.0		
		5	+0.012	+0.020	5.50~10.00	5~15	2.0~15.0	2	1.5
		6	+0.004	+0.012	6.50~10.00	5~15	2.0~30.0		
	8	+0.015	+0.024	8.50~15.00	5~16	2.0~30.0			
	10	+0.006	+0.015	11.00~17.00	5~20	3.0~30.0			
	12	+0.018	+0.029	13.00~18.00	6~24	3.0~30.0			
	13	+0.007	+0.018	14.00~20.00	7~26	5.0~30.0			
	16			17.00~27.00	8~32	5.0~30.0			
	20	+0.021 +0.008	+0.035 +0.022	22.00~30.00	10~40	5.0~30.0			