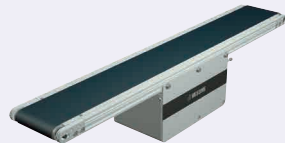


Flat Belt Conveyors

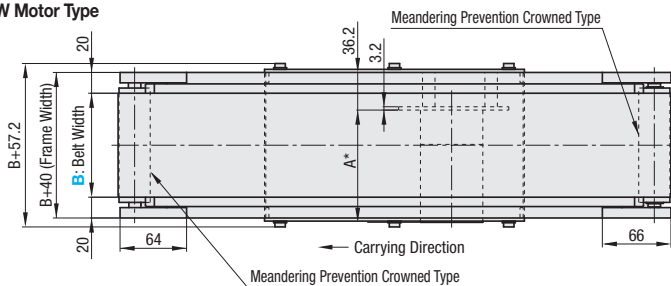
Center Drive, 2-Groove Frame (Pulley Dia. 30mm)

■ **Features:** A Flat Belt Conveyor with drive section repositionable. Belt tension can be adjusted at the center drive section, and the overall length does not change even after the above tension adjustment is performed. With the addition of tapped holes for pulley holders, mounting of optional parts becomes easier than that with CVSN.



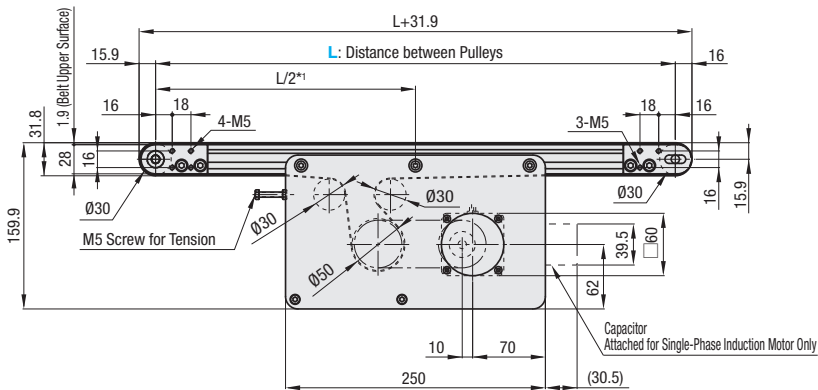
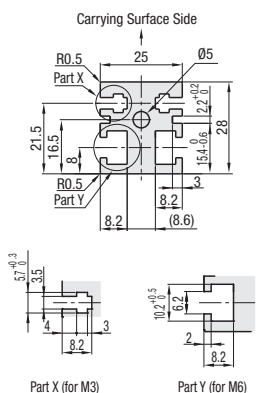
CVGN

6W Motor Type

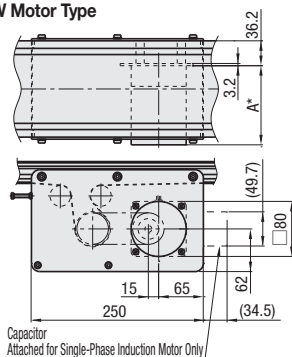


| | Frame | Motor Cover (1) | Motor Cover (2) | Pulley Holder |
|----------------------------|---------------|-----------------|-----------------|---------------|
| M Material | Aluminum | Aluminum | SPCC | Aluminum |
| S Surface Treatment | Clear Anodize | Paint | Paint | Paint |

Frame Cross Section and Enlarged View (Symmetrical)



25W Motor Type



🔗 Compatible with JIS standard hex nuts.

*1. The drive section can be moved to a desired position within the aluminum extrusion slots.

*2. When $L \geq 455$, each slot has four (4) nuts inserted. When counterbores for inserting nuts are required, so specify in form of alteration ordering.

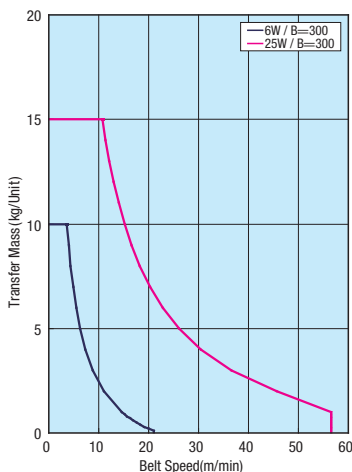
🔗 The dimensions in the diagram is for Belt Specification H (0.9mm THK). Note that belt thickness varies by Belt Specifications. For Belt Specifications, see **P.1313**~.

🔗 On some operating environments, conveyance failure may occur.

* A Dimension (Motor Overall Length) Details

| Output (W) | Motor | | Reduction Ratio | A |
|------------|----------------------|--------------|-----------------|-------|
| | Specification | Manufacturer | | |
| 6W | Induction Motor | Panasonic | 5-25 | 101.0 |
| | | | 30-180 | 108.0 |
| | | Oriental | 5-25 | 105.0 |
| | | | 30-180 | 115.0 |
| | Variable Speed Motor | Taiwanese | 5-75 | 114.7 |
| | | | 90-180 | 120.7 |
| | | Oriental | 5-25 | 115.0 |
| | | | 30-180 | 125.0 |
| 25W | Induction Motor | Panasonic | 5-180 | 115.0 |
| | | | 5-18 | 117.0 |
| | | Oriental | 25-180 | 127.5 |
| | | | Taiwanese | 5-75 |
| | Variable Speed Motor | Oriental | 90-180 | 136.0 |
| | | | 5-18 | 127.0 |
| | | Taiwanese | 25-180 | 137.5 |
| | | | 5-75 | 139.5 |
| 90-180 | 146.5 | | | |

■ Conveying Capacity



* Reference Value

■ Gearhead Reduction Ratio

* May decrease depending on load condition.

| Gearhead Reduction Ratio | Belt Speed (m/min) | |
|--------------------------|--------------------|------|
| | 50Hz | 60Hz |
| 5 | 47.1 | 56.5 |
| 7.5 | 31.4 | 37.7 |
| 9 | 26.2 | 31.4 |
| 12.5 | 18.8 | 22.6 |
| 15 | 15.7 | 18.8 |
| 18 | 13.1 | 15.7 |
| 25 | 9.4 | 11.3 |
| 30 | 7.9 | 9.4 |
| 36 | 6.5 | 7.9 |
| 50 | 4.7 | 5.7 |
| 60 | 3.9 | 4.7 |
| 75 | 3.1 | 3.8 |
| 90 | 2.6 | 3.1 |
| 100 | 2.4 | 2.8 |
| 120 | 2.0 | 2.4 |
| 150 | 1.6 | 1.9 |
| 180 | 1.3 | 1.6 |