

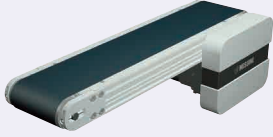
Flat Belt Conveyors

Head Drive, 3-Groove Frame (Pulley Dia. 50mm)

CE Compliant

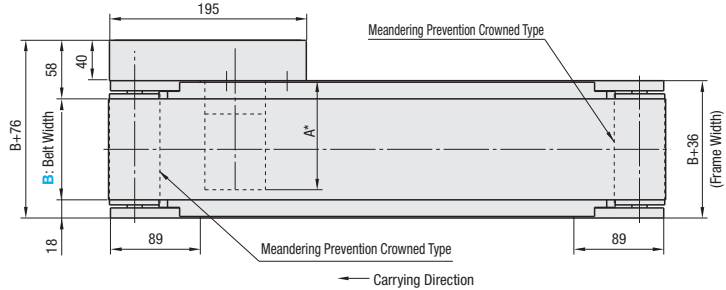
*The above compliance applies only for Single-phase 230V Motors.

■ **Features:** Flat belt with the width configurable in the increments of 1mm (the finest level in the industry). Superior to CVSB in maintainability and space saving.

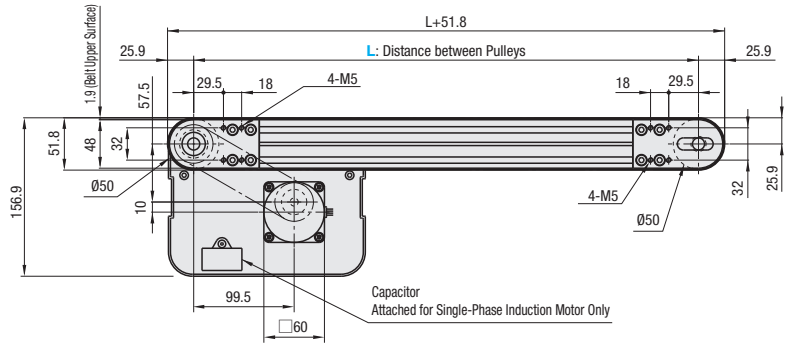
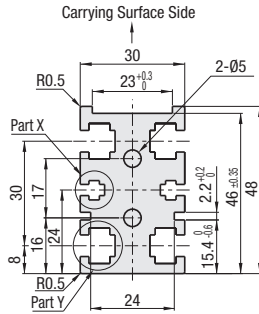


CVGC 6W Motor Type

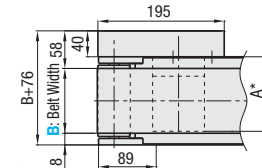
	Frame	Motor Cover	Pulley Holder
M Material	Aluminum	Aluminum	Aluminum
S Surface Treatment	Clear Anodize	Paint	Paint



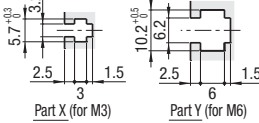
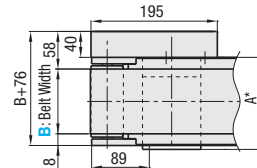
Frame Cross Section and Enlarged View (Symmetrical)



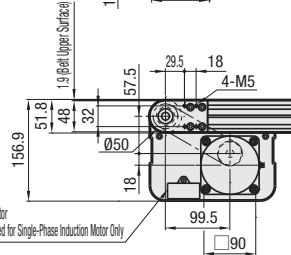
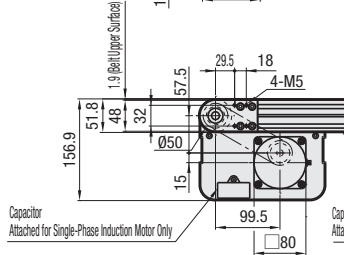
25W Motor Type



40W Motor Type



⚡ Compatible with JIS standard hex nuts.



* When $L \geq 340$, each slot has four (4) nuts inserted. When counterbores for inserting nuts are required, so specify in form of alteration ordering.

⚡ The dimensions in the diagram is for Belt Specification H (0.9mm THK). Note that belt thickness varies by Belt Specifications. For Belt Specifications, see P1313-

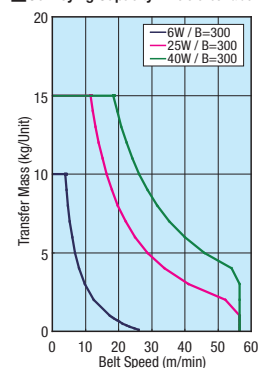
⚡ On some operating environments, conveyance failure may occur.

* A Dimension (Motor Overall Length) Details

Output (W)	Motor Specification	Manufacturer	Reduction Ratio	A
6W	Induction Motor	Panasonic	5-25	101.0
			30-180	108.0
		Oriental	5-25	105.0
			30-180	115.0
	Variable Speed Motor	Taiwanese	5-75	114.7
			90-180	120.7
		Oriental	5-25	115.0
			30-180	125.0
25W	Induction Motor	Panasonic	5-180	115.0
			5-18	117.0
		Taiwanese	5-75	129.0
			90-180	136.0
	Variable Speed Motor	Oriental	5-18	127.0
			25-180	137.5
		Taiwanese	5-75	139.5
			90-180	146.5

Output (W)	Motor Specification	Manufacturer	Reduction Ratio	A
40W	Induction Motor	Panasonic	5-180	142.0
			5-18	147.0
		Oriental	25-180	165.0
			5-75	161.6
	Variable Speed Motor	Taiwanese	90-180	170.6
			5-18	157.0
		Oriental	25-180	175.0
			5-75	172.1
Taiwanese	90-180	181.1		

■ Conveying Capacity * Reference Value



■ Gearhead Reduction Ratio

* May decrease depending on load condition.

Gearhead Reduction Ratio	Belt Speed (m/min)	
	50Hz	60Hz
5	47.1	56.5
7.5	31.4	37.7
9	26.2	31.4
12.5	18.8	22.6
15	15.7	18.8
18	13.1	15.7
25	9.4	11.3
30	7.9	9.4
36	6.5	7.9
50	4.7	5.7
60	3.9	4.7
75	3.1	3.8
90	2.6	3.1
100	2.4	2.8
120	2.0	2.4
150	1.6	1.9
180	1.3	1.6