

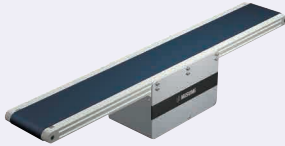
Flat Belt Conveyor SV Series

Center Drive, 2-Groove Frame (Pulley Dia. 30mm)

CE Compliant

* The above compliance applies only for Single-phase 230V Motors.

Features: Streamlined structuring has achieved the low cost. The center drive section is adjustable.

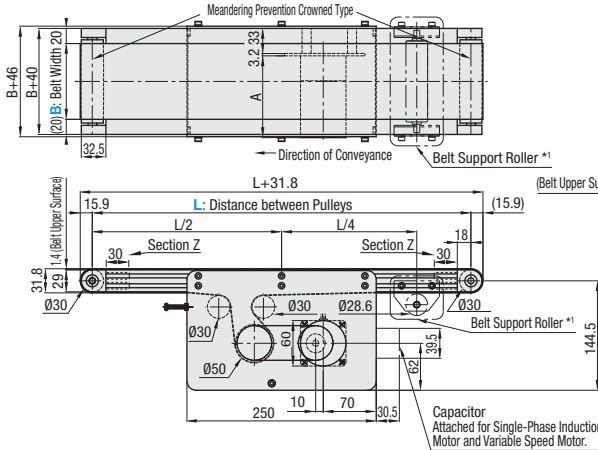


SVKN

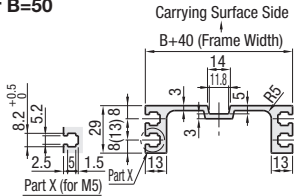
- * When L≥490, each slot has four (4) nuts inserted. When counterbores for inserting nuts are required, so specify in form of alteration ordering.
- *1. When L≥2005, belt support rollers are mounted at these positions.
- ⦿ The dimensions in the diagram is for Belt Specification H (0.9mm THK). Note that belt thickness varies by Belt Specifications. For Belt Specifications, see P1313--.
- ⦿ The Z section of the frame is used for pulley holder mounting. The nuts cannot be moved to this area.
- ⦿ On some operating environments, conveyance failure may occur.

	Frame	Motor Cover (1)	Motor Cover (2)	Pulley Holder
M Material	Aluminum	Aluminum	SPCC	Aluminum
S Surface Treatment	Clear Anodize	Paint	Paint	Paint

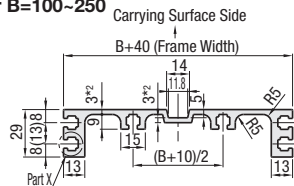
6W Motor Type



Frame Cross Section and Enlarged View For B=50

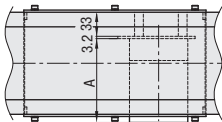


For B=100~250

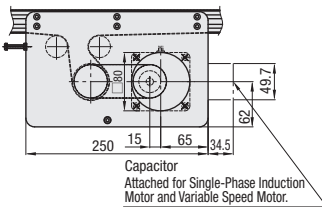


- ⦿ For B=50, down facing slot is not provided.
- ⦿ For B=200 and 250, *2 section thickness is 4mm.
- ⦿ Compatible with JIS standard hex nuts.
- ⦿ A pre-assembly insertion nut is not included.

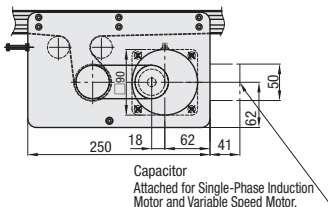
25W, 40W, 60W, 90W Motor Type



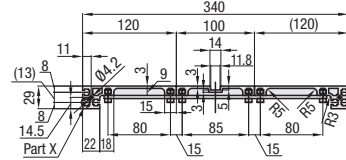
25W Motor Type



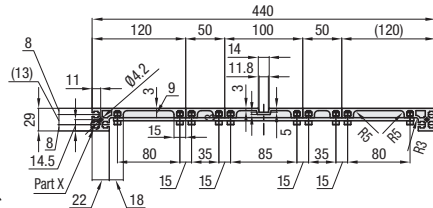
40W, 60W, 90W Motor Type



For B=300



For B=400

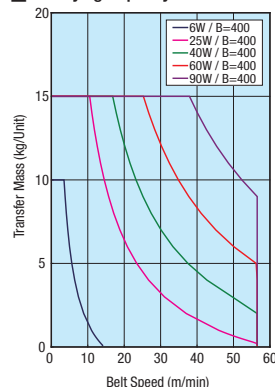


A Dimension (Motor Overall Length) Details

Output (W)	Motor Specification	Manufacturer	Reduction Ratio	A
6W	Induction Motor	Panasonic	5-25	101.0
			30-180	108.0
	Induction Motor	Oriental	5-25	105.0
			30-180	115.0
	Variable Speed Motor	Taiwanese	5-75	114.7
			90-180	120.7
25W	Induction Motor	Panasonic	5-25	115.0
			30-180	125.0
	Induction Motor	Oriental	5-75	126.9
			90-180	132.9
	Variable Speed Motor	Taiwanese	5-180	115.0
			5-18	117.0
6W	Induction Motor	Panasonic	5-18	117.0
			25-180	127.5
	Induction Motor	Oriental	5-75	129.0
			90-180	136.0
	Variable Speed Motor	Taiwanese	5-18	127.0
			25-180	137.5
90W	Induction Motor	Panasonic	5-75	139.5
			90-180	146.5
	Induction Motor	Oriental	5-18	127.0
			25-180	137.5
	Variable Speed Motor	Taiwanese	5-75	139.5
			90-180	146.5

Output (W)	Motor Specification	Manufacturer	Reduction Ratio	A
40W	Induction Motor	Panasonic	5-180	142.0
			5-18	147.0
	Induction Motor	Oriental	25-180	165.0
			5-75	161.6
	Variable Speed Motor	Taiwanese	90-180	170.6
			5-18	157.0
60W	Induction Motor	Panasonic	5-75	172.1
			90-180	203.6
	Induction Motor	Oriental	5-180	180.0
			5-180	185.0
	Variable Speed Motor	Taiwanese	5-75	182.6
			90-180	191.6
90W	Induction Motor	Panasonic	5-180	215.0
			5-75	194.6
	Induction Motor	Oriental	90-180	203.6
			5-180	195.0
	Variable Speed Motor	Taiwanese	5-180	200.0
			5-75	195.6
Variable Speed Motor	Taiwanese	90-180	204.6	
		5-180	230.0	
Variable Speed Motor	Taiwanese	5-75	209.6	
		90-180	218.6	

Conveying Capacity * Reference Value



Gearhead Reduction Ratio

* Conveyance speeds are reference values based on IM (motor rotational speed 1,500 rpm [50 Hz]/1,800 rpm [60 Hz]).
 * May decrease depending on load condition.

Gearhead Reduction Ratio	Belt Speed (m/min)	50Hz	60Hz
5	47.1	56.5	
7.5	31.4	37.7	
9	26.2	31.4	
12.5	18.8	22.6	
15	15.7	18.8	
18	13.1	15.7	
25	9.4	11.3	
30	7.9	9.4	
36	6.5	7.9	
50	4.7	5.7	
60	3.9	4.7	
75	3.1	3.8	
90	2.6	3.1	
100	2.4	2.8	
120	2.0	2.4	
150	1.6	1.9	
180	1.3	1.6	

- ⦿ For motor specification SCM, this is adjustable up to (1/15) × (max. speed). The weight that can be conveyed decreases as the speed decreases.