

Points of comparison against similar products | For Load Rating, C-VALUE components are different from the similar products. (For details, see P.772.)
 When considering adopting C-VALUE parts, select them by comparing against similar products in the specifications. P.777

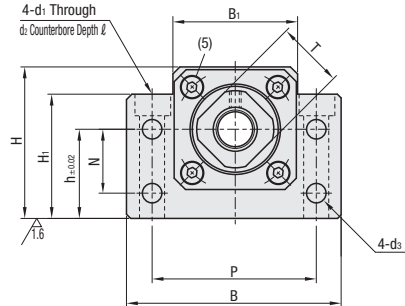
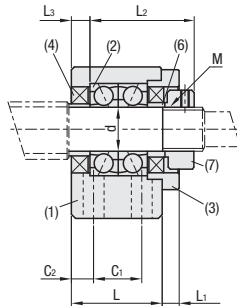


RoHS 10

Type		Material		Surface Treatment
Fixed Side only	Fixed Side and Support Side SET	(1)(3)	(6)(7)	(1)(3)(6)(7)
C-BSFW	C-BSFW-SET	S45C	SS400	Black Oxide

Component Details

Number	Part Name	Qty.
(1)	Bearing Housing	1
(2)	Oversize-made angular contact bearing Grade 5	1 Set
(3)	Cover	1
(4)	Oil Seal	2
(5)	Hex Socket Head Cap Screw	4
(6)	Collar	2
(7)	Bearing Nut (with Set Piece)	1



- ⦿ d=6 and 8 come with one Oil Seal (4).
- ⦿ Do not disassemble (1), (2), (3), (4) and (5) as they must remain as an assembled unit.
- ⦿ When used together with a MISUMI ball screw, there is one support unit accessory collar spare.

Part Number	Support Side SET	d	L	L1	L2	L3	B	H	h	B1	H1	P	N	C1	C2	d1	d2	d3	ℓ	M (Fine)	T	Oil Seal Applicable Shaft Dia.	C-BSFW	C-BSFW-SET
																							Unit Price	Unit Price
C-BSFW	10S	-SET (Only when purchased in Sets)	10	25	5	29	5	60	39	22	34	32.5	46	15	13	6	6.6	11	5.5	5	M10x1.0	16	12	
	10																						14	
	12																						15	
	15																						20	
	20																						27.5	
25	31.5																							



Ordering Example

Part Number
C-BSFW15 (Fixed-side single type)
C-BSFW15-SET (SET part type)

- ⦿ For details of Bearings, Included Collars and Bearing Nuts in addition to mounting interface accuracies of Support Units, see P.777.
- ⦿ Ball Screw Compatibility Chart P.774
- ⦿ * Store Accessories with care since they are required when assembling.
- ⦿ No.15 and No.20 cannot be used with MISUMI ball screws. For the applicable ball screws manufactured by other companies, see P.776, "Ball Screw / Support Unit Mapping Table - Ball Screw Shaft Diameters: Ø20, Ø28, Ø30 and Ø32."



Example

