

**Points of comparison against similar products**

For Load Rating, C-VALUE components are different from the similar products. (For details, see P.772.)

When considering adopting C-VALUE parts, select them by comparing against similar products in the specifications. P.777

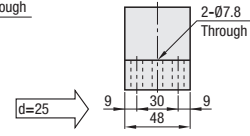
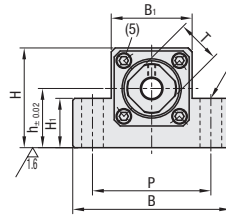
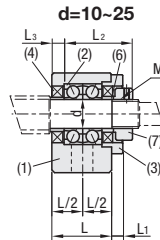
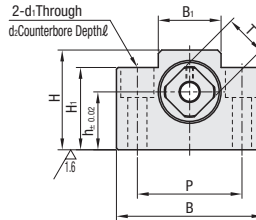
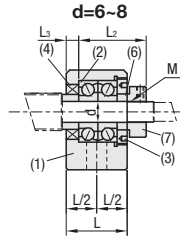


RoHS 10

**Component Details**

Number	Part Name	Qty.
(1)	Bearing Housing	1
(2)	Overseas-made angular contact bearing Grade 5	1 Set
(3)	Cover	1
(4)	Oil Seal	2
(5)	Hex Socket Head Cap Screw	4
(6)	Collar	2
(7)	Bearing Nut (with Set Piece)	1

Type	Material	Surface Treatment
Fixed Side only	(1)(3) (6)(7)	(1)(3)(6)(7)
C-BSW	S45C SS400	Black Oxide



\* The number of mounting holes is four.

- d=6 and 8 come with one Oil Seal (4).
- Do not disassemble (1), (2), (3), (4) and (5) as they must remain as an assembled unit.
- When used together with a MISUMI ball screw, there is one support unit accessory collar spare.

Part Number	Support Side SET	d	L	L1	L2	L3	B	H	h	B1	H1	P	d1	d2	ℓ	M (Fine)	T	Oil Seal Applicable Shaft Dia.	C-BSW	C-BSW-SET	
																			Unit Price	Unit Price	
C-BSW	-SET (Only when purchasing support units in set)	6	20	5.5	22	3.5	42	25	13	18	20	30	5.5	9.5	11	M6x0.75	12	9.5			
		8S	23	7	26	4	52	32	17	25	26	38	6.6	11	11	M8x1.0	14	10			
		8																11.5			
		10S	24	6	29.5	6	70	43	25	36	24	52	9			M10x1.0	16	12			
		10																14			
		12																19	15		
		15S	25	10	36	5	80	49	30	41	25	60				M15x1.0	22	19.5			
		15																20	20		
		20	42	10	50	10	95	58	56	75	11	75				M20x1.0	30	25			
		20																35	31.5		
25	48	13	60	14	105	68	35	66		85				M25x1.5	35	31.5					

\* Take care in combining No.20 with Ball Screw BSSZ(K)2510, BSR(K)2510, BSST2510 or BSR(K)2510 or in combining No.15 with Ball Screw BSR(K)2010. The ball screw nut may come in contact with the bottom surfaces.



Ordering Example

Part Number

C-BSW15

(Fixed-side single type)

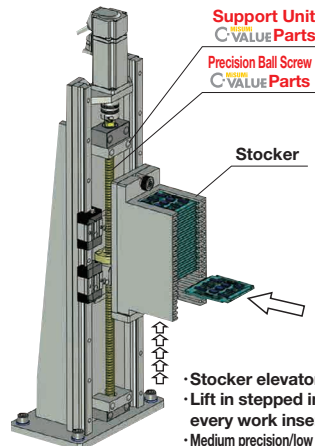
C-BSW15-SET

(SET part type)



Example

<Elevator Device>



Support Unit  
C-VALUE Parts

Precision Ball Screw  
C-VALUE Parts

Stocker

- Stocker elevator device
- Lift in stepped increments for every work insertion
- Medium precision/low frequency positioning

- For details of Bearings, Included Collars and Bearing Nuts in addition to mounting interface accuracies of Support Units, see P.777.
- Ball Screw Compatibility Chart P.774
- \* Store Accessories with care since they are required when assembling.