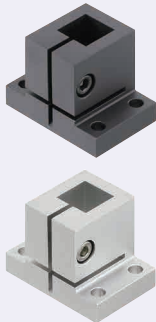


# Stand-Up Brackets - Square Hole

## Standard / Side Mounting Holes

■ **Features:** By using in sets with Square Tubes and Strut Clamps, sensors and cameras can be prevented from rotating during setup changes. **Accessory:** For Posts for Stands used in sets, refer to **P2159**

### Standard

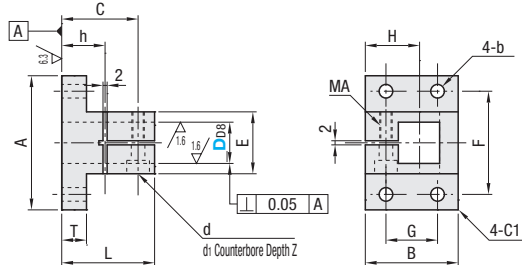


RoHS 10

Type	M Material	S Surface Treatment	A Accessory
CLQB	SS400	Black Oxide	Hex Socket Head Cap Screw
CLQNM		Electroless Nickel Plating	Hex Socket Head Cap Screw (Stainless Steel)
CLQBM	A6061	Black Anodize	Hex Socket Head Cap Screw
CLQAM		Clear Anodize	Hex Socket Head Cap Screw
CLQS	SUS304	-	Hex Socket Head Cap Screw (Stainless Steel)

**Accessory:** CB screws (**P2-171**) are included with black oxide/black anodized products, and SCB screws (**P2-173**) are included with the other products, respectively.

25 / (6.3 / 1.6 /)

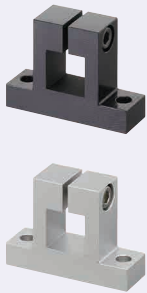


Part Number		D <sub>h8</sub>	A	B	L	T	E	F	G	b	C	H	d	d <sub>1</sub>	Z	MA	h	Unit Price			
Type	D <sub>h8</sub>																	CLQB	CLQNM	CLQBM	CLQAM
CLQB CLQNM CLQBM CLQAM CLQS	10	+0.077	38	24	24	7	20	30	14	4.5	17.5	15	4.5	8	4.5	M4	10				
	12	+0.050	48	32	36	9	26	38	20	5.5	24	19	5.5	9.5	5.5	M5	12				
	20	+0.098	52	36	40	10	30	42	24	6.5	26.5	21	6.5	11	6.5	M6	13				
	25	+0.065	62	45	48	12	35	48	28	6.5	32	28	6.5	11	6.5	M6	15				

The tolerance and perpendicularity of D<sub>h8</sub> are before slitting.

Recommended Tolerances of mating shafts: 0 ~ -0.12. For Stand for Posts, see **P2159**. Tightening with a long wrench is recommended.

### Side Mounting Holes

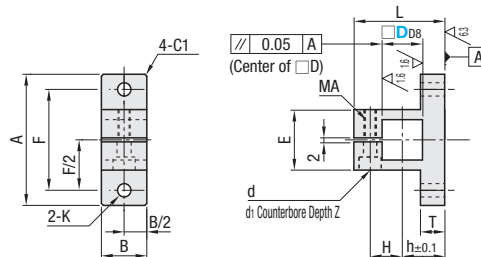


RoHS 10

Type	M Material	S Surface Treatment	A Accessory
CLTQB	SS400	Black Oxide	Hex Socket Head Cap Screw
CLTQNM		Electroless Nickel Plating	Hex Socket Head Cap Screw (Stainless Steel)
CLTQBM	A6061	Black Anodize	Hex Socket Head Cap Screw
CLTQAM		Clear Anodize	Hex Socket Head Cap Screw
CLTQS	SUS304	-	Hex Socket Head Cap Screw (Stainless Steel)

**Accessory:** CB screws (**P2-171**) are included with black oxide/black anodized products, and SCB screws (**P2-173**) are included with the other products, respectively.

25 / (6.3 / 1.6 /)



Part Number		D <sub>h8</sub>	A	B	L	T	F	K	h	H	E	d	d <sub>1</sub>	Z	MA	Unit Price				
Type	D <sub>h8</sub>															CLTQB	CLTQNM	CLTQBM	CLTQAM	CLTQS
CLTQB CLTQNM CLTQBM CLTQAM CLTQS	10	+0.077	38	11	29	7	30	4.5	14	10	20	4.5	8	4.5	M4					
	12	+0.050	48	15	36	9	38	5.5	18	13	26	5.5	9.5	5.5	M5					
	20	+0.098	52	20	40	10.5	42	6.5	19	16	30	6.5	11	6.5	M6					
	25	+0.065	73	24	54	12	54	6.5	25	20	35	6.5	11	6.5	M6					

The tolerance and perpendicularity of D<sub>h8</sub> are before slitting.

Recommended Tolerances of mating shafts: 0 ~ -0.12. For Stand for Posts, see **P2159**. Tightening with a long wrench is recommended.



Ordering Example

Part Number  
CLQBM15  
CLTQS20



Example

