

Stand-Up Brackets

Side Mounting, Casting, Dowel Holes / Slotted Holes

■ **Features:** Up to 67% price reduction by cast-producing compared to the standard products (left-hand page).

Side Mounting, Casting



Side Mounting, Casting, Dowel Holes

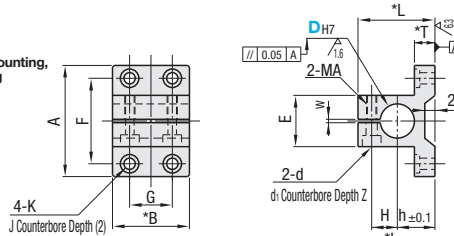


RoHS10

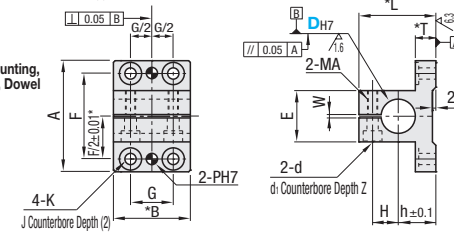
Type		Material	Surface Treatment	Accessory	
Side Mounting, Casting	Side Mounting, Casting, Dowel Holes	FCD450	Black Oxide or Phosphate Conversion Coating	Hex Socket Head Cap Screw	Hex Socket Head Set Screw, Dowel Pin
CLTBD	CLPBD		Electroless Nickel Plating	Hex Socket Head Cap Screw	Hex Socket Head Cap Screw (Stainless Steel)
CLTMD	CLPMD				

⚠ Accessory: CB screws (P2-171) are included with black oxide or phosphate conversion coated products, and SCB screws (P2-173) are included with electroless nickel plated products. Dowel pins (P2-255) are included with the product with dowel holes.

Side Mounting, Casting



Side Mounting, Casting, Dowel Holes



Tolerance of Cast Products

A, B, L, E and T dimensions are for casting tolerance.

Casting Tolerance Class CT12 for JISB0403

over	or Less	Tolerance
10	16	±2.2
17	25	±2.3
26	40	±2.5
41	63	±2.8
64	100	±3.0
101	160	±3.5

Included Dowel Pins

DH7	Accessory Dowel Pin
20	MSTM6-20
25	
30	MSTM8-20
35	
40	MSTM10-30
50	

* ±0.01 of F/2 part is only applicable to hole pitch tolerance of dowel holes and not applicable to through holes.

* B ends are milled for aesthetics.

* L and T have 2 degrees of draft for cast-mold extraction.

⚠ Antirust oil is applied with black oxide or phosphate conversion coating and electroless nickel plating finish.

Part Number		A	B	L	T	F	G	K	J	h	H	E	d	d1	Z	MA	W	With Dowel Holes	Included Screw	Unit Price				
Type	DH7																			Side Mounting, Casting	Side Mounting, Casting, Dowel Holes			
																				CLTBD	CLTMD	CLPBD	CLPMD	
Side Mounting, Casting,	20	65	45	45	12	50	25	6.6	13	22	15	30	6.6	11	6.5	M6	2	6	+0.012	M6-20, 2 pcs.				
	25	80	53	60	60	36	9	18	27	18	35	9	14	9	M8	2	8	+0.015	M6-25, 2 pcs.					
	30	90	60	60	70	40	11	20	30	21	45	11	17.5	11	M10	3	10	+0.015	M8-35, 2 pcs.					
Side Mounting, Casting, Dowel Holes	35	105	80	68	15	80	40	11	20	35	24	50	11	17.5	11	M10	3	10	+0.015	M8-40, 2 pcs.	-	-		
	40	115	76	76	90	40	11	20	38	27	60	11	17.5	11	M10	3	10	+0.015	M10-45, 2 pcs.	-	-			
	50	135	100	87	18	105	50	14	24	43	33	70	11	17.5	11	M10	3	10	+0.015	M10-50, 2 pcs.	-	-		

⚠ The tolerance and perpendicularity of DH7 are before slitting.

⚠ For mating, g6, f8 shaft tolerances are recommended. For Stand for Posts, see P2143 and P2144. Tightening with a long wrench is recommended.

⚠ D=30 or less are applicable to CLPBD and CLPMD.

Ordering Example

Part Number	CLTBD20
CLTMD30	

Side Mounting, Slotted Holes

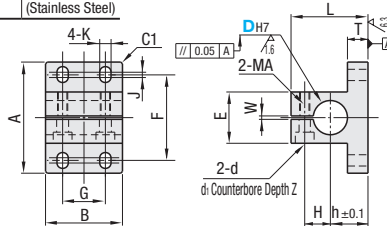


RoHS10

Type	Material	Surface Treatment	Accessory
CLNB	Steel for General Structure	Black Oxide	Hex Socket Head Cap Screw
CLNM		Electroless Nickel Plating	Hex Socket Head Cap Screw
CLNA	Aluminum Alloy	Clear Anodize	Cap Screw
CLNS	SUS304	-	(Stainless Steel)

⚠ Accessory: For CLNB, CB Screws (P2-171), for others, SCB Screws (P2-173)

25 / (6.3 / 1.6)



Part Number		A	B	L	T	G	F	J	K	h	H	E	d	d1	Z	MA	W	With Dowel Holes	Included Screw	Unit Price				
Type	DH7																			Side Mounting, Casting	Side Mounting, Casting, Dowel Holes			
																				CLNB	CLNM	CLNA	CLNS	
CLNB (D20-30, 40)	20	65	45	45	12	25	47.5	5.5	6.6	22	15	30	6.6	11	6.5	M6	2	6	+0.012	M6-20, 2 pcs.				
	25	80	53	60	60	36	57.5	7.5	9	27	18	35	9	14	9	M8	2	8	+0.015	M6-25, 2 pcs.				
	30	90	60	60	70	40	11	20	30	21	45	11	17.5	11	M10	3	10	+0.015	M8-35, 2 pcs.					
CLNM (D20-50)	35	105	80	68	15	80	40	11	20	35	24	50	11	17.5	11	M10	3	10	+0.015	M8-40, 2 pcs.	-	-		
	40	115	76	76	90	40	11	20	38	27	60	11	17.5	11	M10	3	10	+0.015	M10-45, 2 pcs.	-	-			
	50	135	100	87	18	50	102.5	12.5	14	43	33	70	11	17.5	11	M10	3	10	+0.015	M10-50, 2 pcs.	-	-		

⚠ The tolerance and perpendicularity of DH7 are before slitting.

⚠ For mating, g6, f8 shaft tolerances are recommended. For Stand for Posts, see P2143 and P2144. Tightening with a long wrench is recommended.

Ordering Example

Part Number	CLNB25
CLNA20	