

[High Precision] Linear Guide / [Simplified Adjustments] X-Axis, Heavy Load Adjustment Unit

■ **Features:** 128mm stroke stages. Well suited for positioning and set-up changes of large and heavy objects.

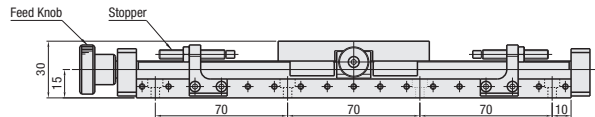
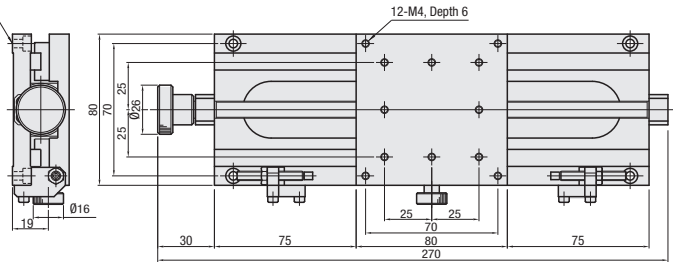
■ X-Axis, Linear Guide



RoHS 10

XLSG80

8-Ø4.5 Through
Ø8 Counterbore, Depth 4.5



Material: Aluminum Alloy Surface Treatment: Black Anodize Accessory: SCB4-10 (8pcs.)

| Part Number Type | Stage Surface No. | Stage Surface (mm) | Travel Distance per Rotation (mm) | Travel Distance (mm) | Load Capacity (N) Horizontal | Motion Parallelism | Moment Load Capacity (N·m) | | | Parallelism | Weight (kg) | Unit Price |
|------------------|-------------------|--------------------|-----------------------------------|----------------------|------------------------------|--------------------|----------------------------|--------|---------|-------------|-------------|------------|
| | | | | | | | Pitching | Yawing | Rolling | | | |
| XLSG | 80 | 80x80 | 24 | 128mm | 147 | 25µm | 10.6 | 7.5 | 11.5 | 50µm | 0.9 | |

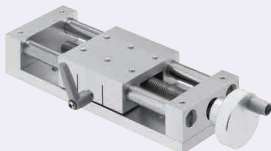
Travel Distance per Rotation: 24mm
Scale is not provided.



Ordering Example Part Number XLSG80

■ **Features:** The shaft is directly clamped with slit providing larger holding force than pushing by the feed screw.

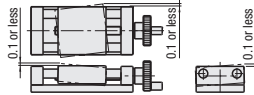
■ Standard



Travel per Rotation: 2.0mm

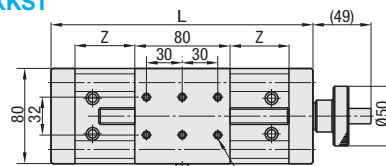
■ Accuracy Standards

Not recommended for precise positioning due to its clearance shown on the left.

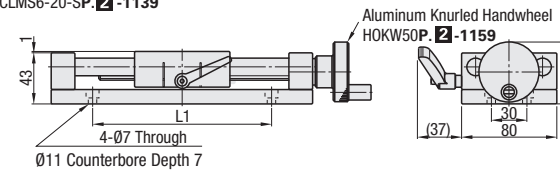


| Type | Main Body | | Shaft (Ø15) | | Feed Screw (M14) | Accessory |
|------|----------------|-------------------|--------------------|----------|------------------|--|
| | Material | Surface Treatment | Material | Hardness | Material | |
| XKST | Aluminum Alloy | Clear Anodize | SUS440C Equivalent | 56HRC~ | SUS303 | - Mounting Screw (SCB6-15 x 4 pcs.) - Scale Label |

XKST



Clamp Lever CLMS6-20-SP. 2-1139



| Part Number Type | Stage Surface No. | Stage Surface (mm) | Travel Distance (mm) (Zx2) | L | L1 | Load Capacity (N) Horizontal | Weight (kg) | Unit Price |
|------------------|-------------------|--------------------|----------------------------|-----|-----|------------------------------|-------------|------------|
| | | | | | | | | |
| | 100 | | 100 | 220 | 150 | 196 | 2.00 | |
| | 150 | | 150 | 270 | 200 | | 2.32 | |

For orders larger than indicated quantity, please request a quotation.



Ordering Example Part Number XKST50



Sheet Position Adjustment

