

# Slot Pins for Inspection Components

## Stepped Diamond, Straight - Diamond Configurable

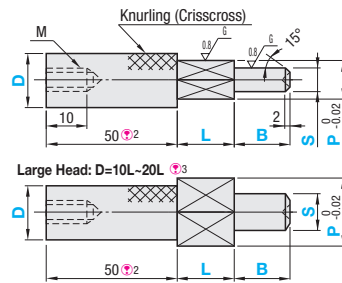
Diamond Shape Configurable

Material*	Hardness	① Round Tip		② D-Shape Tip	
		Type	Type	Type	Type
S45C Equivalent	-	S <sub>0.02</sub> <sup>0</sup> / F <sub>0.05</sub> <sup>0</sup>	Sg6	S <sub>0.02</sub> <sup>0</sup> / F <sub>0.05</sub> <sup>0</sup>	Sg6 / F <sub>0.05</sub> <sup>0</sup>
S45C Equivalent	45HRC~	-	-	KJPVH	KJPGVH
SUS304	-	-	-	-	KJPGVS

S	g6
3.00	-0.002
3.01~ 6.00	-0.004
6.01~ 10.00	-0.005
10.01~ 18.00	-0.008
18.01~ 28.00	-0.007
	-0.020

### ① Round Tip

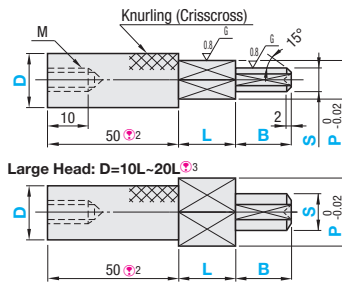
Small Head: D=8-25



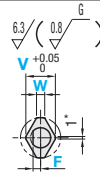
- ① For electroless nickel plating, specify the alteration MN.
- ② For shorter handle length, specify the alteration ZC.

### ② D-Shape Tip

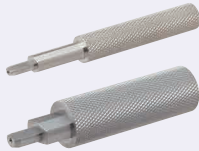
Small Head: D=8-25



- ③ Dimensions not specified are the same as Small Head Type.
- The joint of each step may have a relief groove (approx. 1mm wide and approx. 0.2mm deep). For no relief groove, use MNM alteration.
- Large Head Type (D=10L~20L) is available for S45C only.



\*Diamond Configurable Type has 1mm flats on faces of the diamond shape.



Part Number		① Round Tip		② D-Shape Tip		0.01mm Increment		0.1mm Increment	1mm Increment	0.1mm Increment	0.5mm Increment	M		
(S <sub>0.02</sub> )	(Sg6)	(S <sub>0.02</sub> )	(Sg6)	(S <sub>0.02</sub> / F <sub>0.05</sub> )	(Sg6 / F <sub>0.05</sub> )	D	P	S (P-1±S)	F (F<S/2) ② For D-Shape Tip only	L	B	V P-V V±S+1	W (V>W)	M
(S45C) KJPVM	(S45C) KJPGVM	(S45C) KJPV	(S45C) KJPGV	(S45C) KJPGVH	(SUS304) KJPGVS	8	4.00~ 6.00	3.00~ 4.00	0.3~ 2.0	5~10	5~15	4.0~ 5.0	1.0~ 4.5	M4
						10	4.00~ 8.00	3.00~ 6.00	0.3~ 3.0					M5
						12	4.00~ 10.00	3.00~ 8.00	0.3~ 4.0					M5
						16	8.00~ 14.00	3.00~ 12.00	0.5~ 6.0					M5
						20	10.00~ 18.00	5.00~ 16.00	1.0~ 8.0					M5
						25	15.00~ 23.00	8.00~ 21.00	2.0~ 10.0					M5
						10L	10.00~ 16.00	5.00~ 14.00	1.0~ 7.0					M5
						12L	12.00~ 20.00	6.00~ 18.00	2.0~ 9.0					M5
						16L	16.00~ 25.00	8.00~ 23.00	2.0~ 11.0					M5
						20L	20.00~ 30.00	10.00~ 28.00	2.0~ 14.0					M5

Please select V, W and S dimensions so that S dimension is smaller than the Diamond section.

Ordering Example: Part Number (TYPE, D) - P - S - F - L - B - V - W  
KJPV16 - P8.00 - S4.00 - F1.0 - L10 - B10 - V7.0 - W5.0

D	① Round Tip Unit Price				② D-Shape Tip Unit Price			
	S <sub>0.02</sub>	Sg6	S <sub>0.02</sub> / F <sub>0.05</sub>	Sg6 / F <sub>0.05</sub>	KJPGV	KJPGVH	KJPGVS	KJPGVH
Small Head	8							
	10							
	12							
	16							
	20							
Large Head	25							
	10L							
	12L							
	16L							
	20L							

Alterations: Part Number - P - S - F - L - B - V - W - (CH, KH, PKC--etc.)  
KJPV16 - P8.00 - S4.00 - F1.0 - L10 - B10 - V7.0 - W5.0 - CH  
KJPGV20 - P16.55 - S10.00 - L7 - B7 - V12.2 - W1.0 - ZC30

Alterations	Code	Spec.
Chain Alterations 	CH	Loss-proof chain (length 600mm) is attached to gauge body. For chains only, see P1862.
Additional Surface Treatment (Electroless Nickel Plating)	MN	Electroless nickel plating is applied. Applicable to Material S45C only. Combination with STC is not available.
Additional Surface Treatment (Black Oxide)	STC	Adds black oxide surface treatment. Applicable to Material S45C only. Combination with MN is not available.
Engraving of P Dimension 	KH	Machines flats on knurled head and engraves P dimension. for SUS304 (with the character orientation arbitrary). Not applicable to handle length 10.

Alterations	Code	Spec.
P Dimension Tolerance 	PKC	Changes P dimension tolerance to g6.
No Relief Groove 	NMN	Omits the relief groove between knurled part and straight part on the step. Not applicable to Large Head Type.
Handle Length 	ZC	Changes handle length 50 to 10, 20, 30 or 40. Ordering Code] ZC20 Handle length 10 and 20 are available only when P≥5 and pin length (L+B) ≤ 30. For Large Head Type, only ZC30 and 40 are applicable. For handle length 10, there is no tapped hole. For handle length 10, combination with KH is not available.