

Press Fit Plungers / Ball Buttons

Standard / Roller

Tapped

Press Fit Plungers Standard

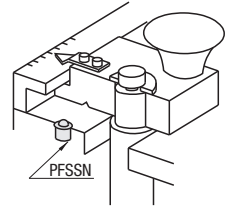
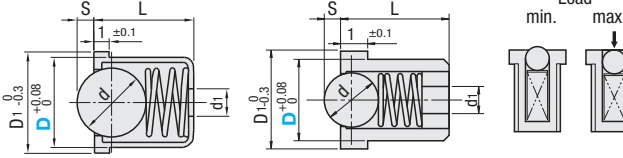


RoHS 10

Type	Body		Ball		Spring	Operating Temperature
	Material	Material	Hardness	Material		
Light Load	PFSSN	SUS303	SUS440C	55HRC~	SUS631J1	-20~120°C
Heavy Load	PFSSR					
Light Load	PFPSN	Polyacetal	Polyacetal	-		-30~80°C
	PFPFN					

(D4 or More)

(D2, 3)



Part Number	Type	D	D1	L		S	d	d1	Light Load (N)				Heavy Load (N)		Unit Price				
				Light Load	Heavy Load				PFSSN		PFPSN, PFPFN		PFSSR		PFSSN	PFSSR	PFPSN	PFPFN	
				min.	max.				min.	max.	min.	max.	min.	max.					
2		2.5	3	-	0.3	1	0.5	0.54	0.78	0.54	0.78	-	-						
3		3.6	4	-	0.6	2	1	0.74	0.98	0.74	0.94	-	-						
4		4.6	5	6.5	0.8	3	1.5	0.65	5.6	1.3	6.4	3.1	8.7						
5		5.6	6	8	1	4	2	2.8	6.3	2.7	8	5.1	13.5						
6		6.6	7	9	1.6	5	2.5	2.95	9.6	1.15	10.2	5.3	16.5						
8		8.6	9	12	1.9	6.35	3	6.5	11.7	6.15	17.2	8	28						
10		10.6	11.5	14.5	2.4	8	3	9	15	2.1	18.8	13.5	30.5						

Recommended Diameter of Mounting Hole $D_1 \pm 0.03$

Use adhesive to prevent loosening.

kgf=Nx0.101972



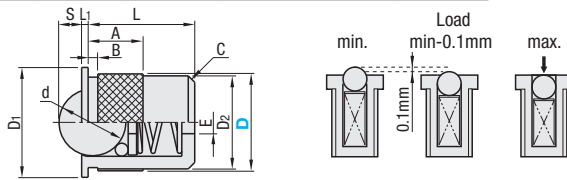
Part Number
PFSSN4

Press Fit Plungers Roller

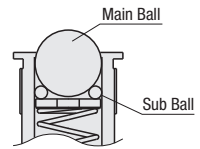


RoHS 10

Type	Material				Spring	Operating Temperature
	Body	Main Ball	Sub Balls			
PFPR	Polyacetal	Polyacetal	SUS440C	SUS631J1		-30~80°C



Features



The combination structure of the main ball and the sub balls helps smooth rotation of the ball.

Part Number	Type	D	D1	D2	L	S	L1	d	A	B	E	C	Allowable Load (N)			Unit Price
													min.	min.-0.1mm	max.	
													7		9	
9		11	8.4	10	1.7	5.56	7	2.5	0	0.2	4					
13		15	12.4	15	2.8	1.5	8.73	7	1.2	3	1	0	0.3	7		
15		17	14.7	16.5	3.5		10.32	8.5		3.5		0	0.3	11		
20		22	19.4	22.5	5.2	1.5	15.88	10.5	1.5	5.3	1	0	0.3	14		
24		26	23.4	29	6.6		19.05	13.5		6.4		0	0.3	21		

Recommended Diameter of Mounting Hole $D_1 \pm 0.03$



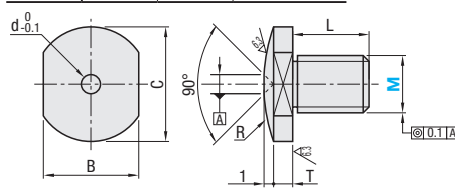
Part Number
PFPR15

Ball Buttons - Tapped

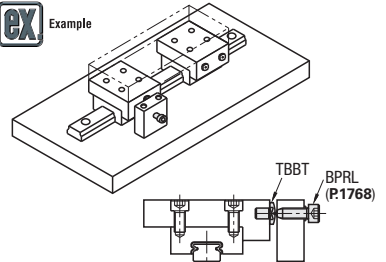


Type	Material	Hardness	Surface Treatment
TBBT	SK4	55~60HRC	Electroless Nickel Plating

25° (6.3°)



When using it with a ball plunger, select the same M.



Part Number	Type	M (Coarse)	B	L	C	T	R	d	Unit Price	Ordering Example	Part Number
		5	8	6	9	2	10.2	2			
		6	10	8	12	2	18	2			
		8	13	10	15	3	27.6	3			
		10	17	12	20	3	48.5	4			
		12	19	15	22	3	57.8	5			