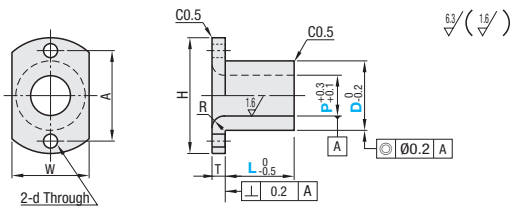


■ **Features:** Economy type is priced up to 49% lower without D/P Dimensions grinding and with the tolerance of P Dimension $+0.3$ / -0.1 and D Dimension 0 / -0.2 .



Material	Surface Treatment	Hardness	Type
S45C Equivalent	-	-	JBOR
	Electroless Nickel Plating	-	JBOM
	-	45-50HRC	JBOK
	Electroless Nickel Plating	45-50HRC	JBON

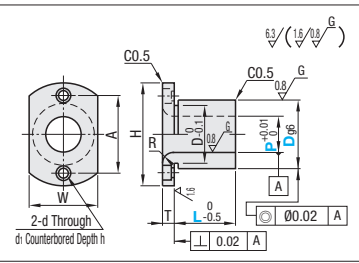


Part Number	Type	D	P	L	R	H	W	T	A	d	Unit Price										
											JBOR	JBOM	JBOK	JBON							
			0.1mm Increment	1mm Increment							L≤20	21≤L	L≤20	21≤L	L≤20	21≤L	L≤20	21≤L			
10	JBOR JBOM JBOK JBON	10	4.0-6.5	5-15	1	25	12	17	17	5											
12		6.0-8.5	28	15		28	15				20										
15		8.0-10.5				17															
16		9.0-11.5			2	40	20	3	30												
18		10.0-12.5	22																		
20		12.0-13.5	25																		
22		12.0-13.5	44	30	4	34	6														
25		13.0-15.5						44	30	4	34										
26		15.0-16.5						3	56	35	5	42									
30		16.0-20.5	60	40	5	42															
35		20.0-25.0	60	40	5	46															



Material	Surface Treatment	Hardness	Type	
			P Fixed and L Selectable	P, L Configurable
SKS3 Equivalent	-	* Treated Hardness: 56 - 60HRC	JBN	JBNF
	Black Oxide		JBNFB	JBNFB
	Electroless Nickel Plating		JBNFM	JBNFM
SUS304	-	-	JBNFS	JBNFS
SUS440C or 13Cr stainless	-	Treated Hardness: 50 - 55HRC	JBNFC	JBNFC

* P Fixed Type is 60 to 63HRC.



■ **P Fixed and L Selectable**

Part Number	Type	P	L Selection	R	H	W	T	Dg6	A	d	d1	h	Unit Price				
													JBN	JBNM			
5	JBN JBNM	8	10 12 16	1	25	12	5	10	-0.005	17	3.3	6.5	3.5				
6								-0.014	12							-0.006	20
8								-0.017	15							-0.017	26
10		12	16 20 25 30	2	36	22	6	18	-0.007	30	4.5	8	4.5				
12								-0.020	22							-0.020	34
13								-0.025	25							-0.025	42
15		16	20 25 30 35	3	44	30	8	26	-0.009	46	6.6	11	6.5				
16								-0.012	30							-0.012	46
20								-0.025	35							-0.025	46

■ **P and L Configurable**

Part Number	Type	Dg6	P 0.01mm Increment	L 0.1mm Increment	R	H	W	T	A	d	d1	h	Unit Price				
													JBNF	JBNFB	JBNFM	JBNFS	JBNFC
10	JBNF JBNFB JBNFM JBNFS JBNFC	10	4.0-6.5	5.0-15.0	1	25	12	5	17	3.3	6.5	3.5					
12		6.0-8.5	28	15									20				
15		8.0-10.5												2	36	22	26
18		10.0-12.5			40	25	6	30	4.5	8	4.5						
20		12.0-13.5	44	30								34					
22		12.0-13.5											56	35	8	42	6.6
25		13.0-15.5			60	40	8	46	6.6	11	6.5						
26		15.0-16.5	35	20.0-25.0								35					
30		16.0-20.5											35	20.0-25.0	35	46	6.6
35		20.0-25.0			35	20.0-25.0	35	46	6.6	11	6.5						

Ordering Example

Part Number	-	P	-	L
JB Y6	-	12	-	12
JB SF20	-	P13.00	-	L30.0
JB OR10	-	P5.0	-	L3
JB N10	-		-	10

Alterations

Part Number	-	P	-	L	-	(TKC, RC, FC, RH)
JB NF15	-	P10.0	-	L10.0	-	TKC
JB TF20	-	P12.0	-	L12.0	-	FC

Alteration	Code	Spec.
T Tolerance	TKC	Changes the T tolerance from general tolerance to ±0.01. Ordering Code TKC ⊗ Not applicable to P Fixed Type, L Selectable Type and Compact Flange Economy Type.
I.D. Radius R	RC	Machines Radius R on both sides. D10→R1 D12→26→R2 D30, 35→R3 Ordering Code RC ⊗ Applicable to JBNF, JBNFB, JBNFM, JBNFS and JBNFC only
	FC	Cuts one side of flange. Ordering Code FC ⊗ Applicable to JBTF and JBTFM only
Inner Diameter Radius R	RH	Changes the inner diameter radius R from shoulder side to D dimension end face. Size of R will be the same as R on shoulder side. Ordering Code RH ⊗ Applicable to Compact Flange, Economy Type only. ⊗ (D-P)/2-R≥1.5